

PLAT OF SURVEY

MADE FOR

STEVE CHOZINSKE

SHEFFIELD VILLAGE, LORAIN COUNTY, OHIO

PREPARED BY

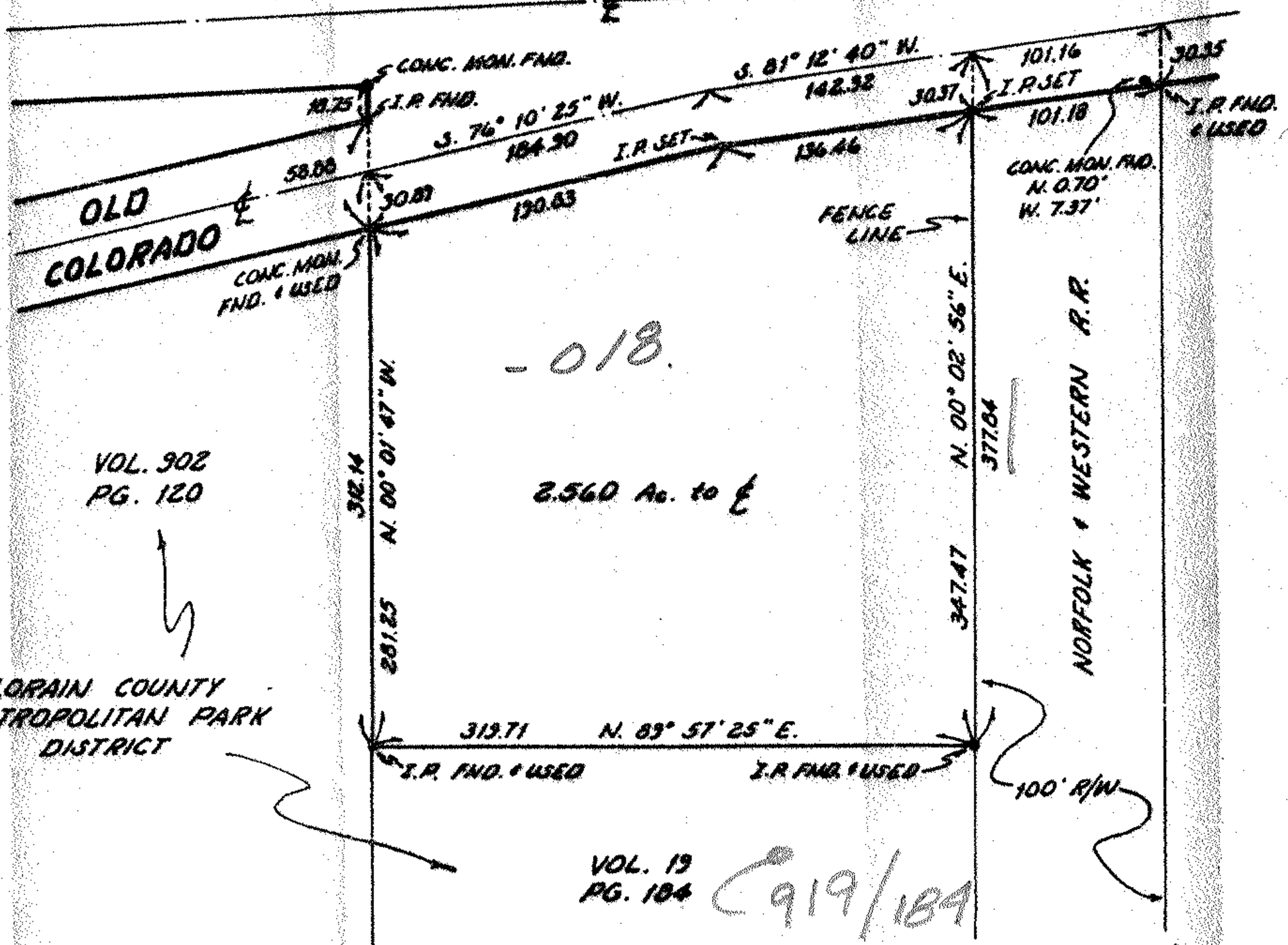
ALEX KANAREFF & ASSOCIATES
CONSULTING ENGINEERS SURVEYORS

SCALE: 1" = 100'

OCT., 1952



COLORADO AVE. (S.R. 611)

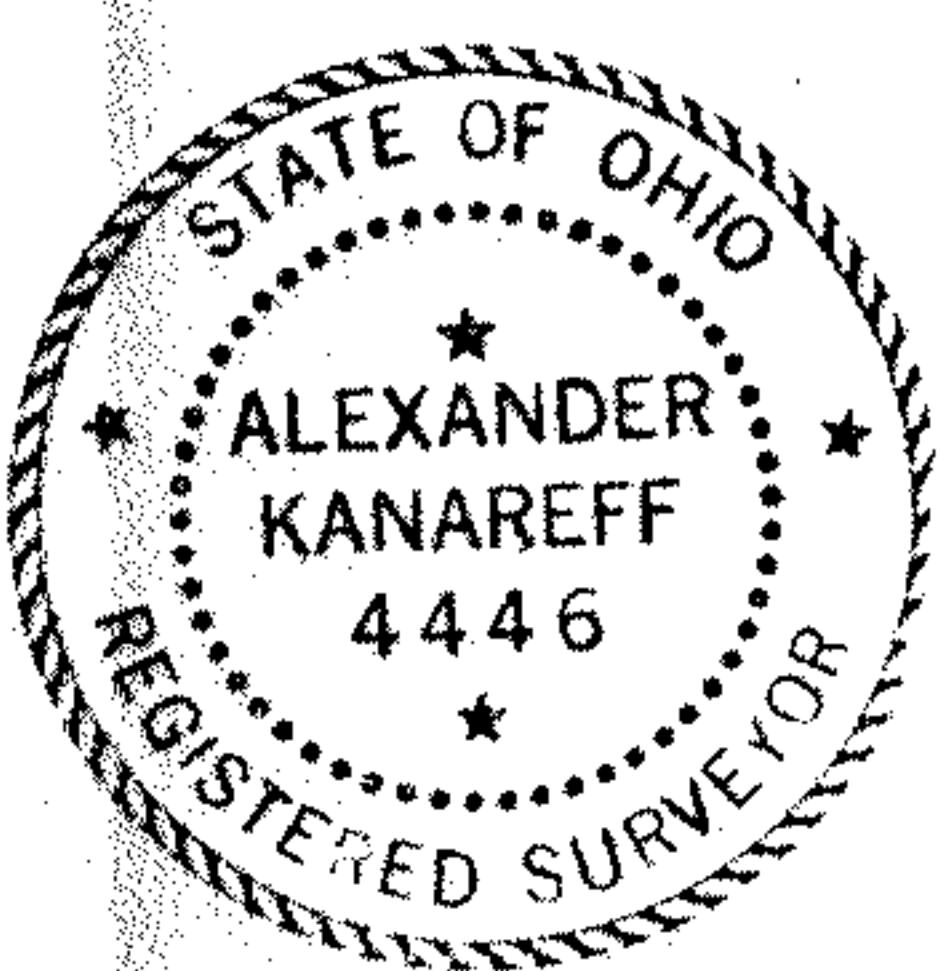


VOL. 902
PG. 120

2.560 Ac. to E

VOL. 19
PG. 104

919/184



#15518
APPROVED
LORAIN CO.
MAP DEPT.

DATE 4.13.54
PAGE 3.00.022-B
BY T. McMain
VOID

03-00-022-102
SCAN# 46531

#15518

3-00-022-B