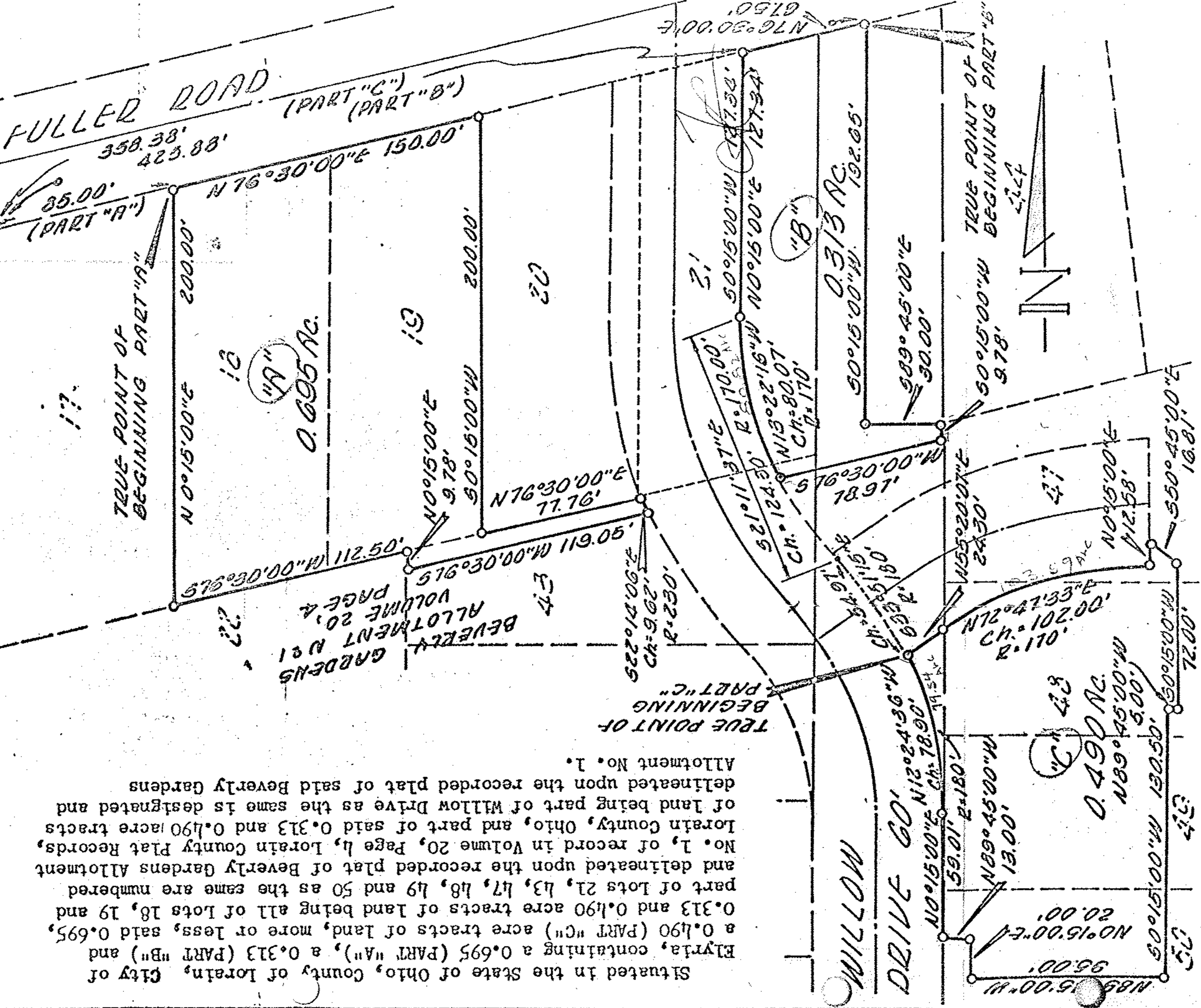


CONSULTING ENGINEERS
2507 1/2 N. HIGH ST.
COLUMBUS, OHIO

PLAT SHOWING A 0.695 ACRE TRACT (PART "A") A 0.313 ACRE TRACT (PART "B") AND A 0.490 ACRE TRACT (PART "C") - PHASE I - WILKES VILLA IN ELYRIA, OHIO

EBONY DRIVE

POINT FOR REFERENCE (FOR PARTS "A", "B" & "C")



Situated in the State of Ohio, County of Lorain, City of Elyria, containing a 0.695 (PART "A"), a 0.313 (PART "B") and a 0.490 (PART "C") acre tracts of land, more or less, said 0.695, 0.313 and 0.490 acre tracts of land being all of Lots 18, 19 and part of Lots 21, 43, 47, 48, 49 and 50 as the same are numbered and delineated upon the recorded plat of Beverly Gardens Allotment No. 1, of record in Volume 20, Page 4, Lorain County Plat Records, Lorain County, Ohio, and part of said 0.313 and 0.490 acre tracts of land being part of Willow Drive as the same is designated and delineated upon the recorded plat of said Beverly Gardens Allotment No. 1.

We hereby certify that the above plat was prepared using the information shown on a survey map prepared by James H. Schmidt, Registered Surveyor, 307 Robinson Bldg., Elyria, Ohio, which map is titled: SURVEY OF PART OF CARLISLE TOWNSHIP, SECTION NO. 1, CITY OF ELYRIA, COUNTY OF LORAIN, STATE OF OHIO, and is dated Feb., 23, 1970, and that said plat is correct.

SCALE 1" = 60'	
SURV'D. BY	CHEK'D
JHS	JHS

DATE: 11-17-70 P. 349
REVISED DATES: ORDER NUMBERS:

By: *[Signature]*
HOSCHGEN-LIPES-ROUSELUP, INC.
Registered Surveyors