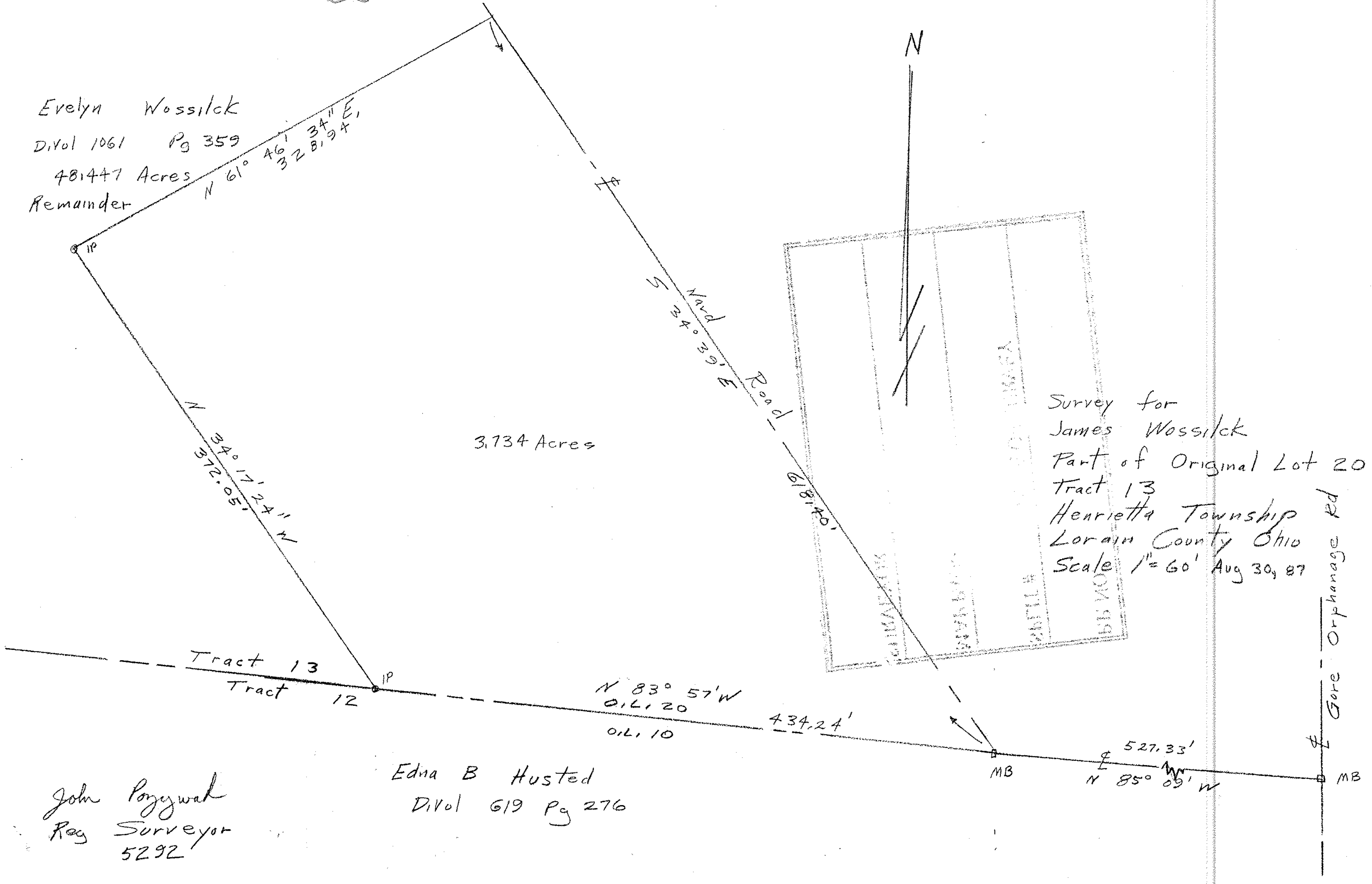


Evelyn Wossilck  
 Divol 1061 Pg 359  
 481447 Acres  
 Remainder

$N 61^{\circ} 46' 32'' E$   
 $461' 34'' E$   
 $3281.94'$



John Poyzwah  
 Reg Surveyor  
 5292

Edna B Husted  
 Divol 619 Pg 276