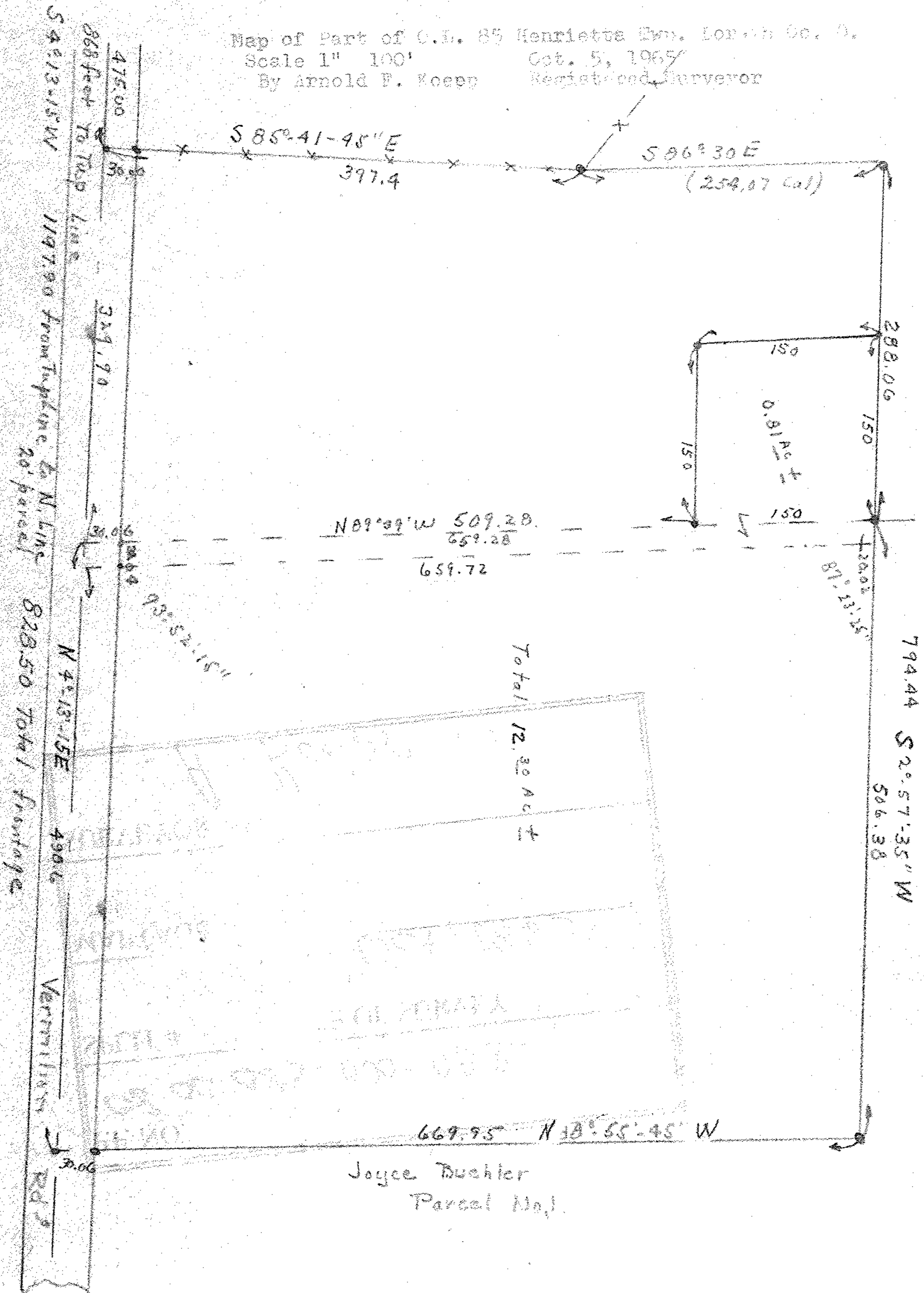
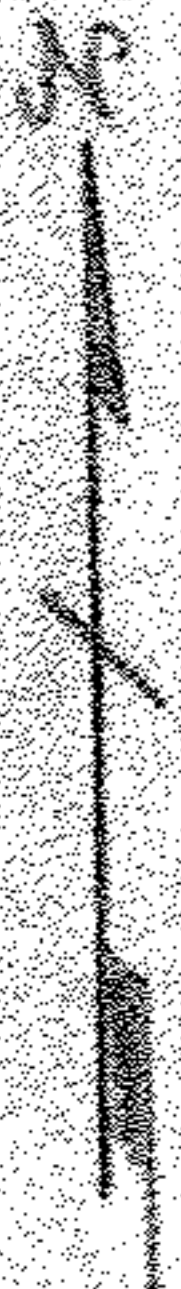


Map of Part of C.L. 85 Henrietta Hwy. Lorain Co., O.
 Scale 1" = 100'
 By Arnold F. Koepp Registered Surveyor
 Oct. 5, 1965

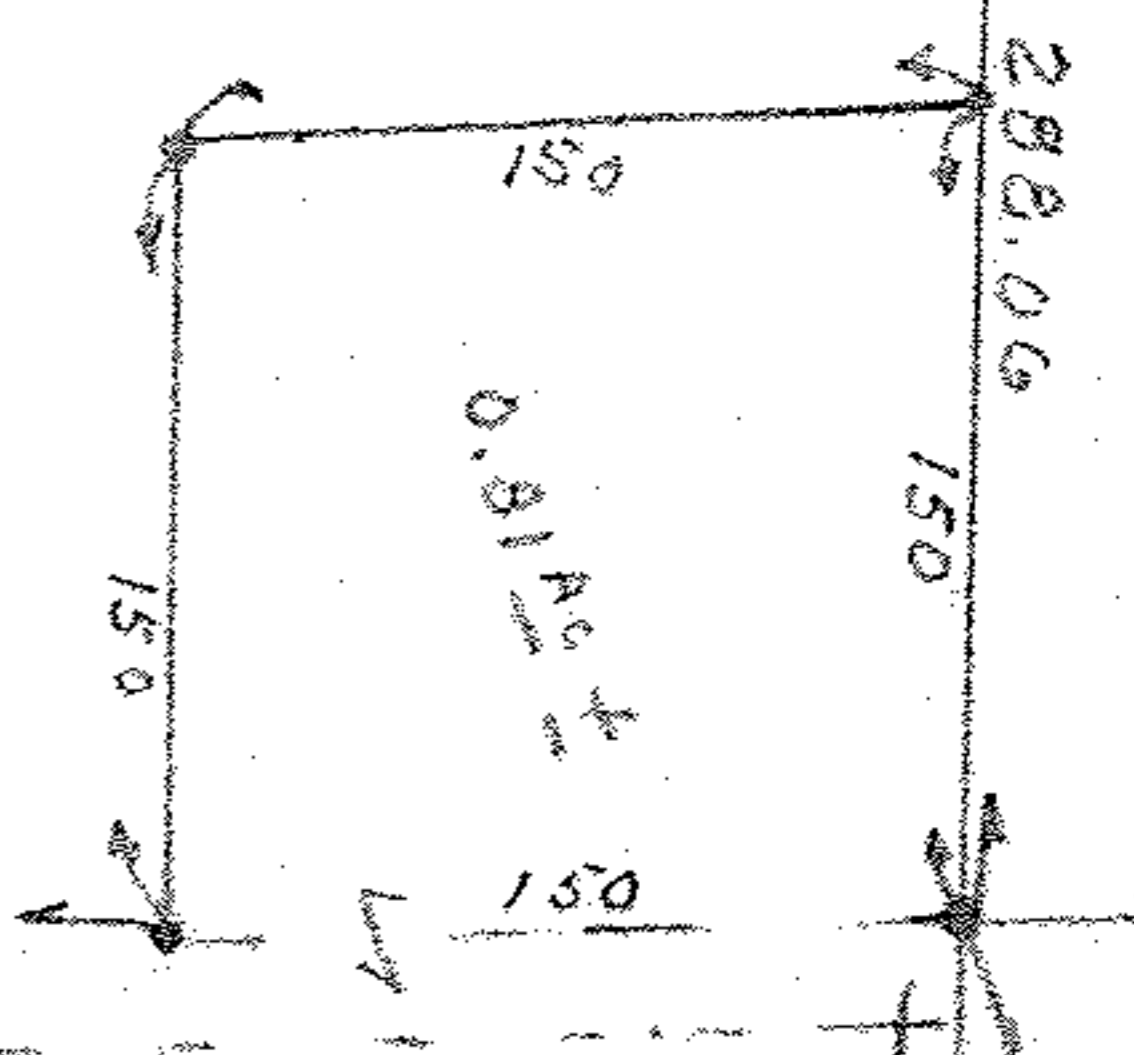


868 feet To Top Line
 475.00
 S 4° 13' 15" W 1197.90 from Topline to N. Line
 329.90
 820.50 Total frontage
 N 4° 13' 15" E 490.6
 Vermillion Rd

S 85° 41' 45" E
 397.4

S 86° 30' E
 (254.07 Cal)

N 89° 09' W 509.28
 659.28
 659.72



288.06
 150
 150
 150
 794.44 S 2° 57' 35" W
 506.38

Total 12.32 Ac ±

669.95 N 13° 55' 45" W

Joyce Buchler
 Parcel No. 1