

Jack Melcher
D. Vol. 350 Pg. 365

Jack Melcher
Acrel No. 2 D. Vol. 580 Pg. 223

Mary E. Palmer
D. Vol. 332 Pg. 166

George H. Wilkinson
D. Vol. 76 Pg. 368

George H. Wilkinson
D. Vol. 76 Pg. 368

The Gurney Company Inc.
D. Vol. 612 Pg. 357
October 12, 1954

07-00-003-102
7-00-003-450

13.760 ACRES OF LAND IN ORIGINAL LOT NO. 3 OF RIDGEVILLE TOWNSHIP, NOW THE VILLAGE OF NORTH RIDGEVILLE

MAP OF PROPERTY LINE SURVEY AND TOPOGRAPHIC SURVEY FOR INTERCHANGE MANOR, INCORPORATED

MAP REVISED SEPTEMBER 1-1960 FOR ADDITIONAL TOPOGRAPHY

OHIO MANOR MOTEL

OHIO MANOR MOTEL

OHIO MANOR MOTEL

OHIO MANOR MOTEL

OHIO MANOR MOTEL

OHIO MANOR MOTEL

OHIO MANOR MOTEL

OHIO MANOR MOTEL

OHIO MANOR MOTEL

OHIO MANOR MOTEL

OHIO MANOR MOTEL

OHIO MANOR MOTEL

OHIO MANOR MOTEL

OHIO MANOR MOTEL

OHIO MANOR MOTEL

OHIO MANOR MOTEL

OHIO MANOR MOTEL

OHIO MANOR MOTEL

OHIO MANOR MOTEL

OHIO MANOR MOTEL

OHIO MANOR MOTEL

OHIO MANOR MOTEL

OHIO MANOR MOTEL

OHIO MANOR MOTEL

OHIO MANOR MOTEL

OHIO MANOR MOTEL

OHIO MANOR MOTEL

OHIO MANOR MOTEL

OHIO MANOR MOTEL

OHIO MANOR MOTEL

OHIO MANOR MOTEL

OHIO MANOR MOTEL

OHIO MANOR MOTEL

OHIO MANOR MOTEL

OHIO MANOR MOTEL

OHIO MANOR MOTEL

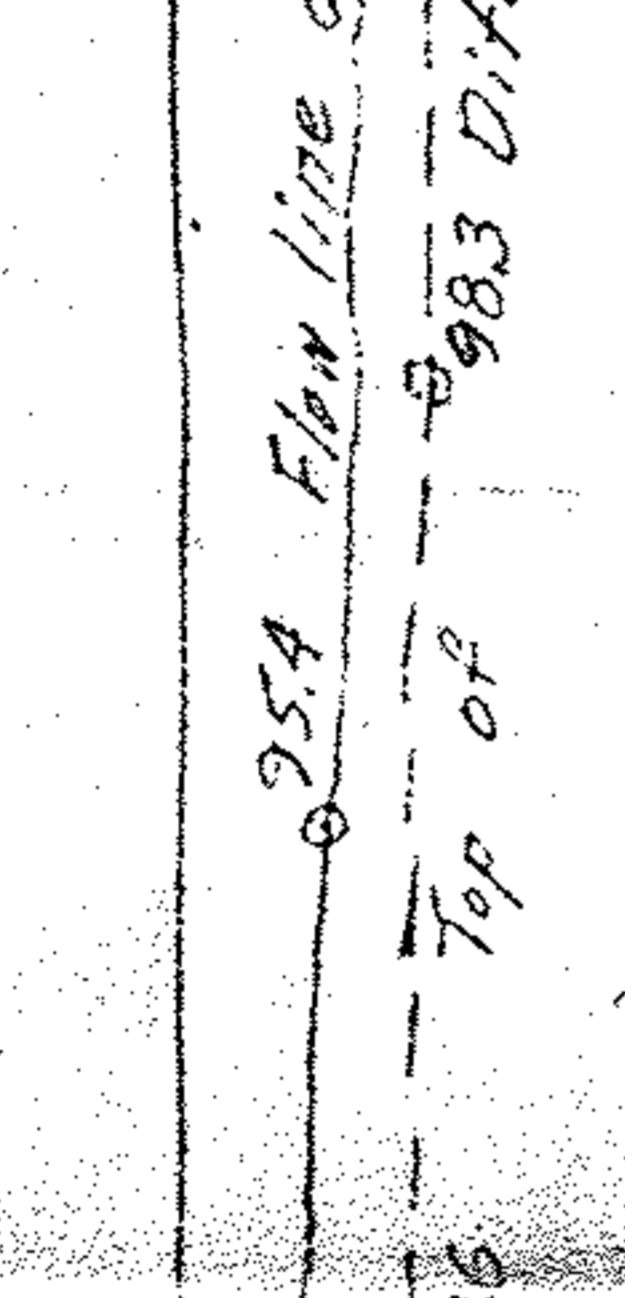
OHIO MANOR MOTEL

OHIO MANOR MOTEL

OHIO MANOR MOTEL

OHIO MANOR MOTEL

NOTES: ● indicates iron pin monument found or set
○ indicates point of observed elevation.



MAP REVISIONS
1-1960
2-1960
3-1960
4-1960
5-1960
6-1960
7-1960
8-1960
9-1960
10-1960
11-1960
12-1960

MAP REVISIONS
1-1960
2-1960
3-1960
4-1960
5-1960
6-1960
7-1960
8-1960
9-1960
10-1960
11-1960
12-1960

MAP REVISIONS
1-1960
2-1960
3-1960
4-1960
5-1960
6-1960
7-1960
8-1960
9-1960
10-1960
11-1960
12-1960

MAP REVISIONS
1-1960
2-1960
3-1960
4-1960
5-1960
6-1960
7-1960
8-1960
9-1960
10-1960
11-1960
12-1960

MAP REVISIONS
1-1960
2-1960
3-1960
4-1960
5-1960
6-1960
7-1960
8-1960
9-1960
10-1960
11-1960
12-1960

MAP REVISIONS
1-1960
2-1960
3-1960
4-1960
5-1960
6-1960
7-1960
8-1960
9-1960
10-1960
11-1960
12-1960

MAP REVISIONS
1-1960
2-1960
3-1960
4-1960
5-1960
6-1960
7-1960
8-1960
9-1960
10-1960
11-1960
12-1960

MAP REVISIONS
1-1960
2-1960
3-1960
4-1960
5-1960
6-1960
7-1960
8-1960
9-1960
10-1960
11-1960
12-1960

MAP REVISIONS
1-1960
2-1960
3-1960
4-1960
5-1960
6-1960
7-1960
8-1960
9-1960
10-1960
11-1960
12-1960

MAP REVISIONS
1-1960
2-1960
3-1960
4-1960
5-1960
6-1960
7-1960
8-1960
9-1960
10-1960
11-1960
12-1960

MAP REVISIONS
1-1960
2-1960
3-1960
4-1960
5-1960
6-1960
7-1960
8-1960
9-1960
10-1960
11-1960
12-1960

MAP REVISIONS
1-1960
2-1960
3-1960
4-1960
5-1960
6-1960
7-1960
8-1960
9-1960
10-1960
11-1960
12-1960

MAP REVISIONS
1-1960
2-1960
3-1960
4-1960
5-1960
6-1960
7-1960
8-1960
9-1960
10-1960
11-1960
12-1960

MAP REVISIONS
1-1960
2-1960
3-1960
4-1960
5-1960
6-1960
7-1960
8-1960
9-1960
10-1960
11-1960
12-1960

MAP REVISIONS
1-1960
2-1960
3-1960
4-1960
5-1960
6-1960
7-1960
8-1960
9-1960
10-1960
11-1960
12-1960

MAP REVISIONS
1-1960
2-1960
3-1960
4-1960
5-1960
6-1960
7-1960
8-1960
9-1960
10-1960
11-1960
12-1960

MAP REVISIONS
1-1960
2-1960
3-1960
4-1960
5-1960
6-1960
7-1960
8-1960
9-1960
10-1960
11-1960
12-1960

MAP REVISIONS
1-1960
2-1960
3-1960
4-1960
5-1960
6-1960
7-1960
8-1960
9-1960
10-1960
11-1960
12-1960

MAP REVISIONS
1-1960
2-1960
3-1960
4-1960
5-1960
6-1960
7-1960
8-1960
9-1960
10-1960
11-1960
12-1960

MAP REVISIONS
1-1960
2-1960
3-1960
4-1960
5-1960
6-1960
7-1960
8-1960
9-1960
10-1960
11-1960
12-1960

MAP REVISIONS
1-1960
2-1960
3-1960
4-1960
5-1960
6-1960
7-1960
8-1960
9-1960
10-1960
11-1960
12-1960

MAP REVISIONS
1-1960
2-1960
3-1960
4-1960
5-1960
6-1960
7-1960
8-1960
9-1960
10-1960
11-1960
12-1960

MAP REVISIONS
1-1960
2-1960
3-1960
4-1960
5-1960
6-1960
7-1960
8-1960
9-1960
10-1960
11-1960
12-1960

MAP REVISIONS
1-1960
2-1960
3-1960
4-1960
5-1960
6-1960
7-1960
8-1960
9-1960
10-1960
11-1960
12-1960

MAP REVISIONS
1-1960
2-1960
3-1960
4-1960
5-1960
6-1960
7-1960
8-1960
9-1960
10-1960
11-1960
12-1960

MAP REVISIONS
1-1960
2-1960
3-1960
4-1960
5-1960
6-1960
7-1960
8-1960
9-1960
10-1960
11-1960
12-1960

MAP REVISIONS
1-1960
2-1960
3-1960
4-1960
5-1960
6-1960
7-1960
8-1960
9-1960
10-1960
11-1960
12-1960

MAP REVISIONS
1-1960
2-1960
3-1960
4-1960
5-1960
6-1960
7-1960
8-1960
9-1960
10-1960
11-1960
12-1960

MAP REVISIONS
1-1960
2-1960
3-1960
4-1960
5-1960
6-1960
7-1960
8-1960
9-1960
10-1960
11-1960
12-1960

MAP REVISIONS
1-1960
2-1960
3-1960
4-1960
5-1960
6-1960
7-1960
8-1960
9-1960
10-1960
11-1960
12-1960

MAP REVISIONS
1-1960
2-1960
3-1960
4-1960
5-1960
6-1960
7-1960
8-1960
9-1960
10-1960
11-1960
12-1960

MAP REVISIONS
1-1960
2-1960
3-1960
4-1960
5-1960
6-1960
7-1960
8-1960
9-1960
10-1960
11-1960
12-1960

MAP REVISIONS
1-1960
2-1960
3-1960
4-1960
5-1960
6-1960
7-1960
8-1960
9-1960
10-1960
11-1960
12-1960

MAP REVISIONS
1-1960
2-1960
3-1960
4-1960
5-1960
6-1960
7-1960
8-1960
9-1960
10-1960
11-1960
12-1960

MAP REVISIONS
1-1960
2-1960
3-1960
4-1960
5-1960
6-1960
7-1960
8-1960
9-1960
10-1960
11-1960
12-1960

MAP REVISIONS
1-1960
2-1960
3-1960
4-1960
5-1960
6-1960
7-1960
8-1960
9-1960
10-1960
11-1960
12-1960

MAP REVISIONS
1-1960
2-1960
3-1960
4-1960
5-1960
6-1960
7-1960
8-1960
9-1960
10-1960
11-1960
12-1960

MAP REVISIONS
1-1960
2-1960
3-1960
4-1960
5-1960
6-1960
7-1960
8-1960
9-1960
10-1960
11-1960
12-1960