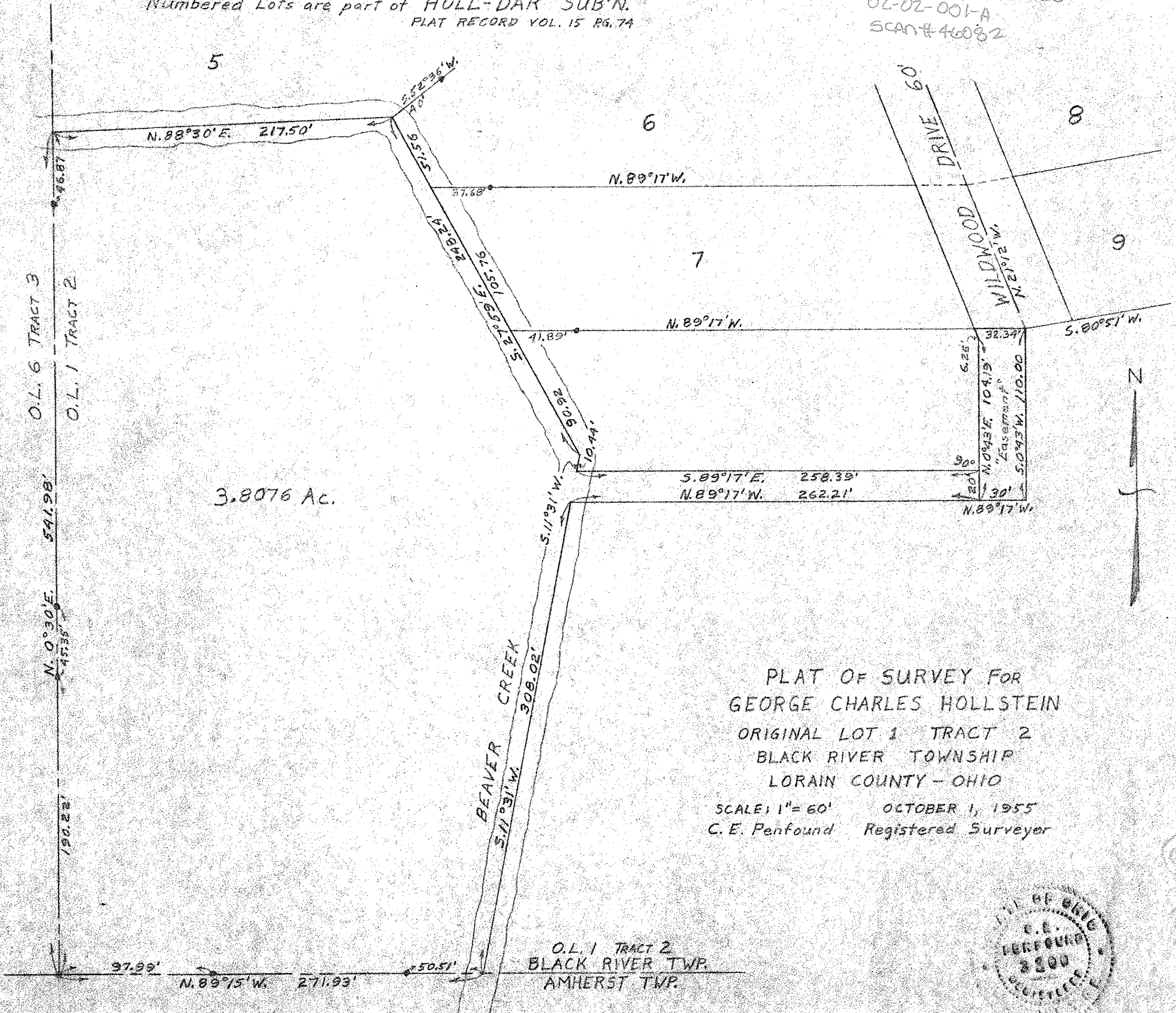


Numbered Lots are part of HOLL-DAR SUB<sup>N</sup>.  
PLAT RECORD VOL. 15 PG. 74

02-02-001-101-020  
02-02-001-A  
SCAN# 46082



3.8076 Ac.

O.L. 6 TRACT 3  
O.L. 1 TRACT 2

PLAT OF SURVEY FOR  
GEORGE CHARLES HOLLSTEIN  
ORIGINAL LOT 1 TRACT 2  
BLACK RIVER TOWNSHIP  
LORAIN COUNTY - OHIO

SCALE: 1" = 60'      OCTOBER 1, 1955  
C. E. Penfound      Registered Surveyor

O.L. 1 TRACT 2  
BLACK RIVER TWP.  
AMHERST TWP.

NOTE: Iron pins found shown thus: ●

