

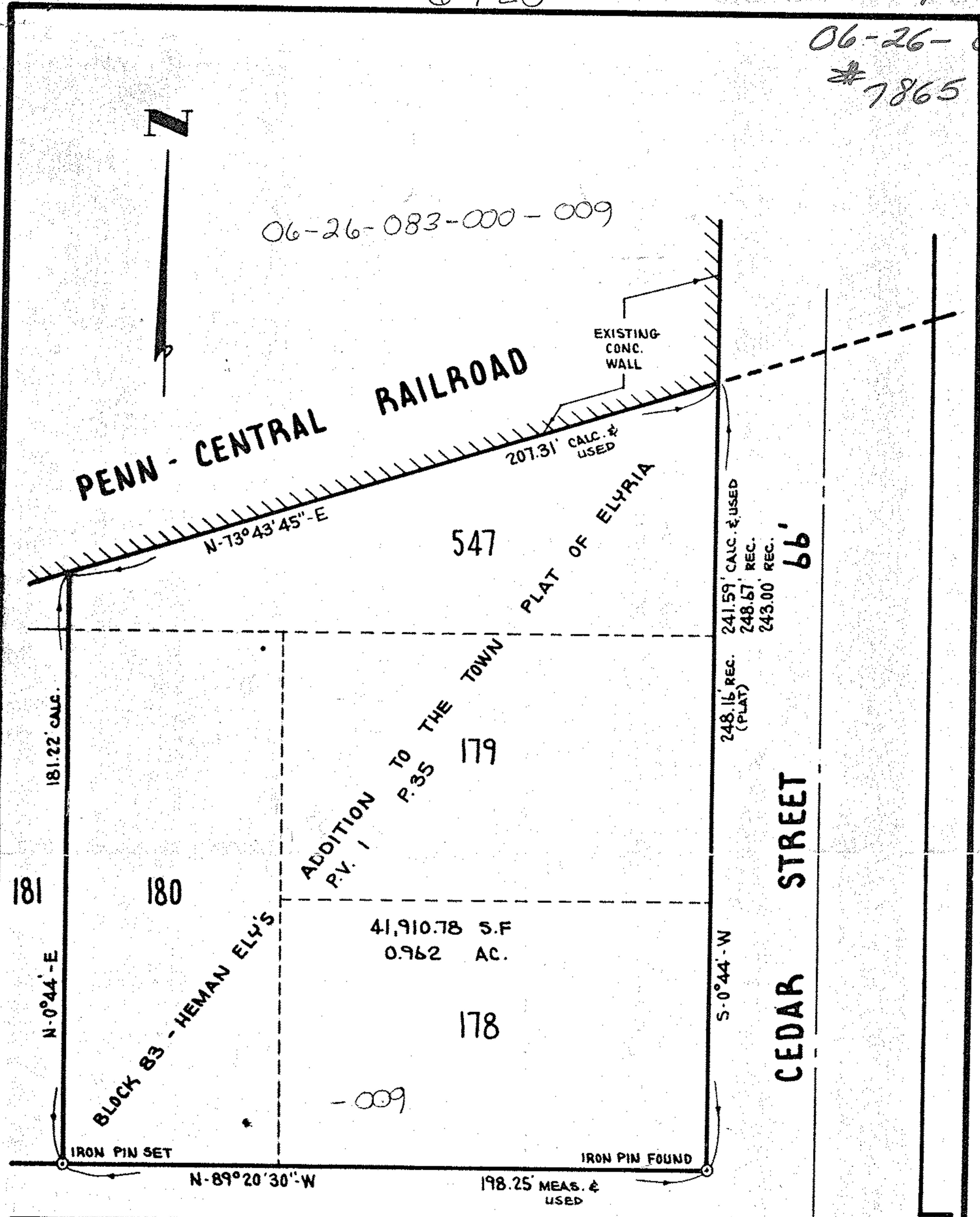
6-26-083

6-120

ELYRIA

06-26-083

#7865



SURVEY OF SUBLOTS NOS 178, 179, 180
AND PART OF 547 IN BLOCK 83 OF HEMAN
ELY'S ADDITION TO THE TOWN PLAT OF ELYRIA

CITY OF ELYRIA COUNTY OF LORAIN STATE OF OHIO

SCALE: 1" = 40'

MARCH 27, 1974

PREPARED BY
KLEINOEDER-SCHMIDT & ASSOC.
 REGISTERED ENGINEERS & SURVEYORS
 ELYRIA OHIO