

Anne Ekelovsky & Stephen J. Shulik  
D. Vol. 378 P. 921

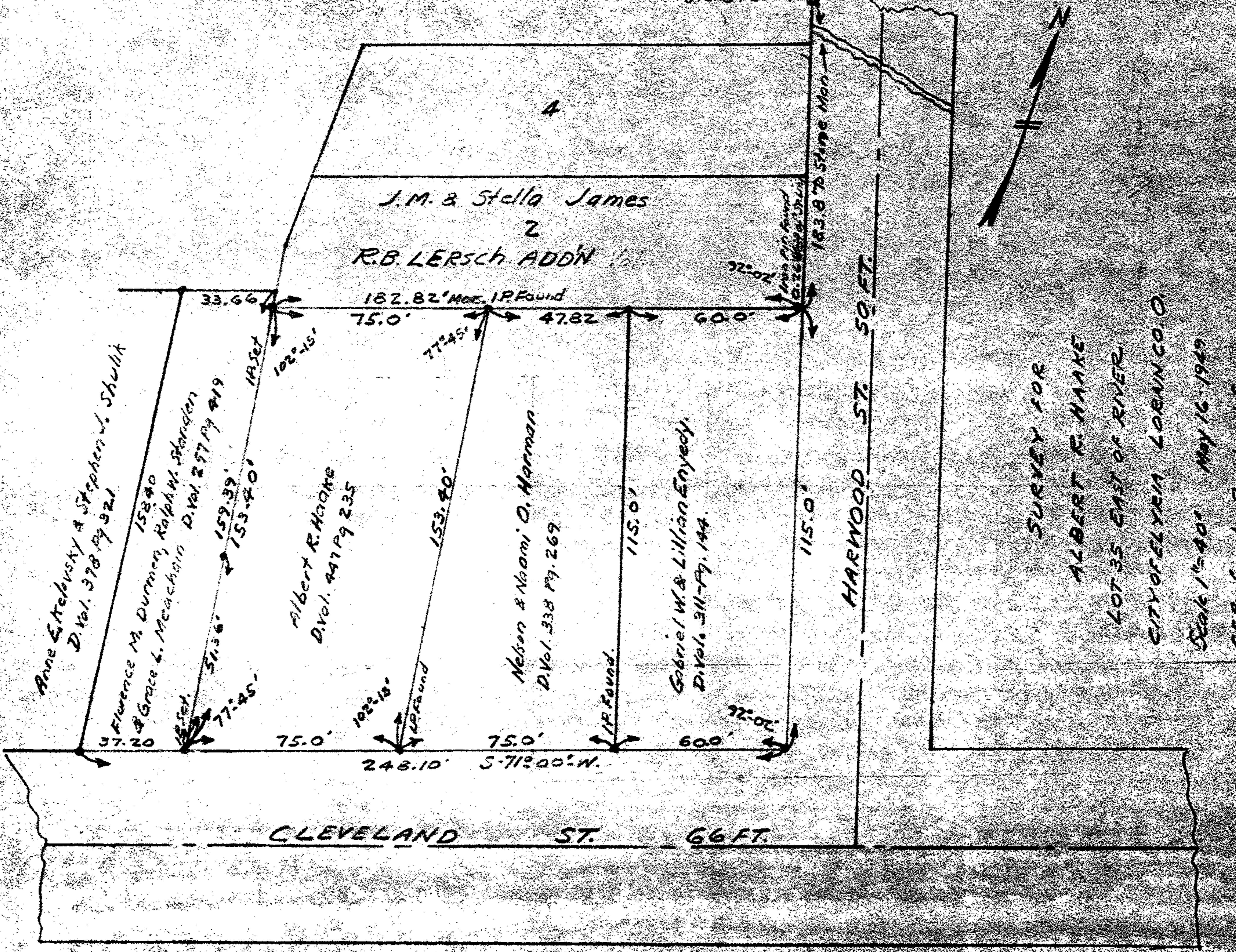
Florence M. Durmen, Ralph W. Storden  
& Grace L. Meacham D. Vol. 277 P. 419

Albert R. Haake  
D. Vol. 447 P. 235

Nelson & Naomi O. Harman  
D. Vol. 338 P. 269

Gabriel W. & Lillian Enyedy.  
D. Vol. 311-P. 144.

J.M. & Stella James  
2  
R.B. LERSCH ADDN



37.20'

33.66'

102°-15'  
102°-15'  
102°-15'  
102°-15'  
102°-15'  
102°-15'

185°-50'

159.39'

153.40'

77°-45'

75.0'

182.82' Mor. I.P. Found

75.0'

47.82'

60.0'

248.10' S-71°-00'-W.

153.40'

75.0'

115.0'

60.0'

115.0'

HARWOOD ST. 50 FT.

CLEVELAND ST. 66 FT.

Stone Found

Stone Found

Stone Found

Stone Found

Stone Found

Stone Found

Stone Found

Stone Found

Stone Found

Stone Found

Stone Found

SURVEY FOR  
ALBERT R. HAAKE  
LOT 35 EAST OF RIVER  
CITY OF ELYRIA LOEWING CO. O  
Scale 1"=40' May 16, 1949  
C. E. Penfound Registered Surveyor