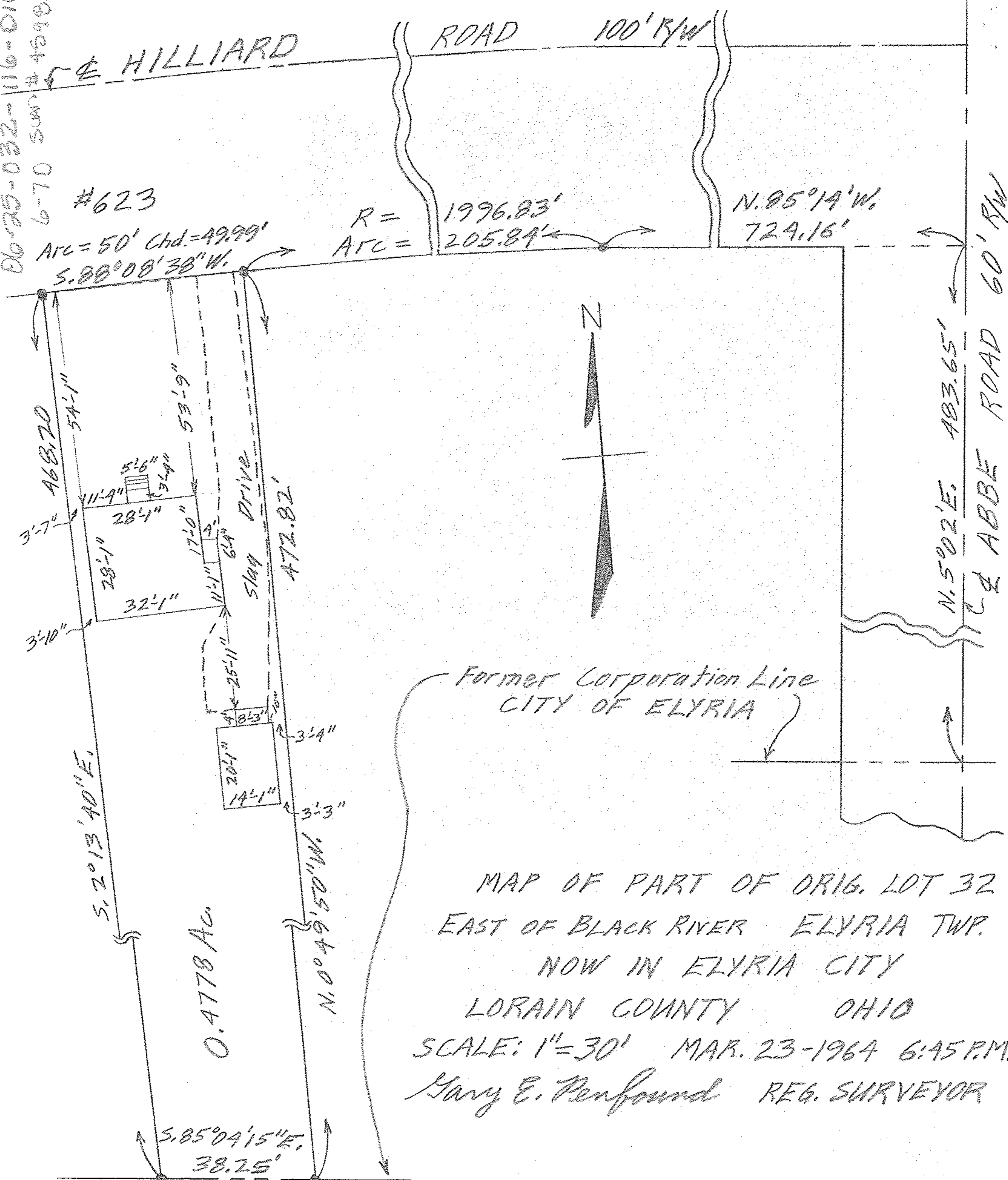


60-25-032-116-016
6-70 SURV. # 45984



#623

ARC = 50' Chd. = 49.99'
S. 88° 08' 38" W.

R = 1996.83'
ARC = 205.84'

N. 85° 19' W.
724.16'

N. 5° 02' E. 483.65'
C & ABBE ROAD 60' RW

Former Corporation Line
CITY OF ELYRIA

MAP OF PART OF ORIG. LOT 32
 EAST OF BLACK RIVER ELYRIA TWP.
 NOW IN ELYRIA CITY
 LORAIN COUNTY OHIO
 SCALE: 1" = 30' MAR. 23-1964 6:45 P.M.
 Mary E. Penfound REG. SURVEYOR

Ronald D. & Rosanne B. Kirkpatrick

W W