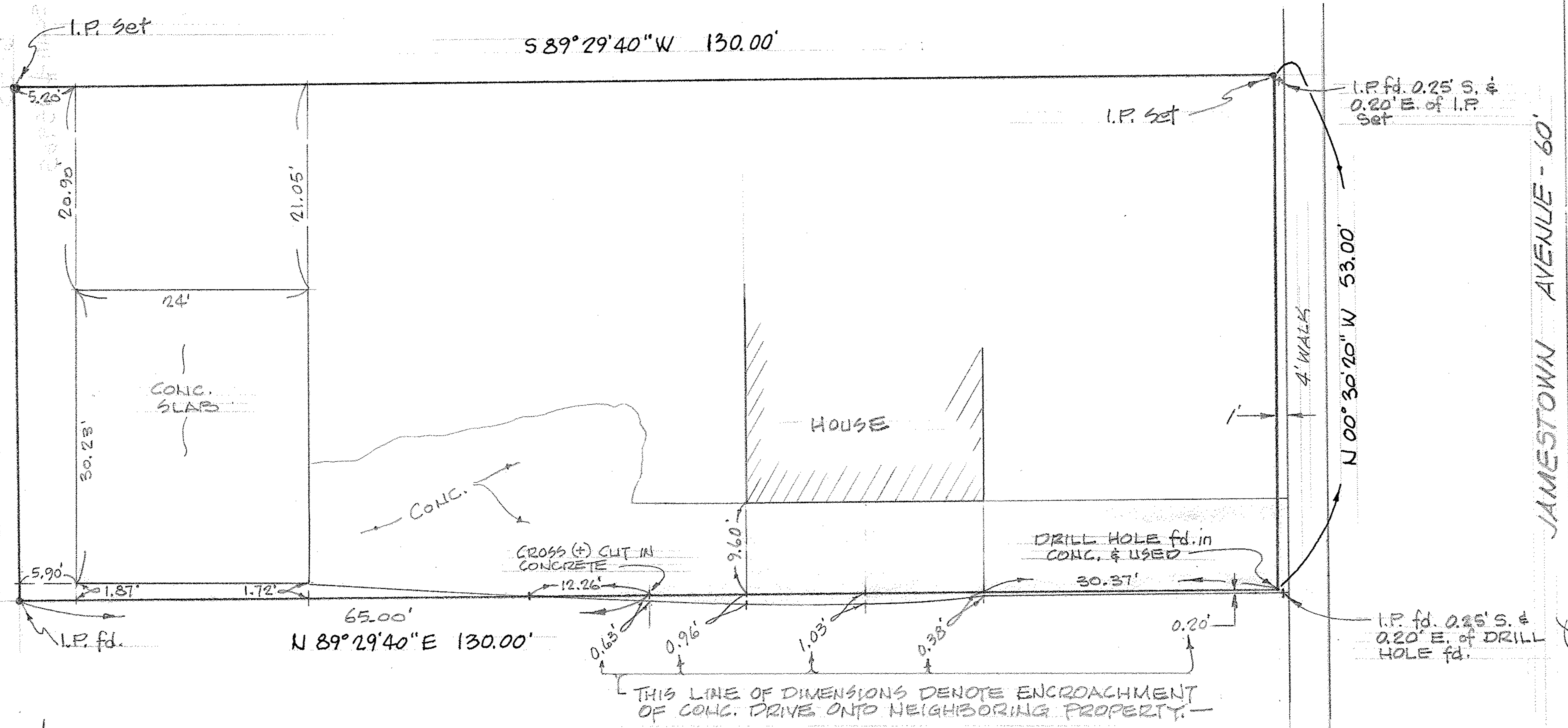


10-92-08-101-853-25-10  
S 00° 30' 20" E 53.00'



SCALE: 1"=10'

### MAP of SURVEY

PREPARED FOR FRANK CHARKOSKY

SUBLOT #118 of AUDITOR'S PLAT of FAIRWOOD SUB'D. No.1 REVISED  
 PLAT VOL. 23, PAGE 18 - PART of ORIG. ELYRIA TWP LOT 28, EAST of RIVER  
 CITY of ELYRIA LORAIN COUNTY OHIO

McGLINCHY & ASSOCIATES INC.  
 PROFESSIONAL ENGINEER & SURVEYORS  
 110 1/2 MIDDLE AVE. ELYRIA, OHIO  
 OCTOBER, 1980 #806525