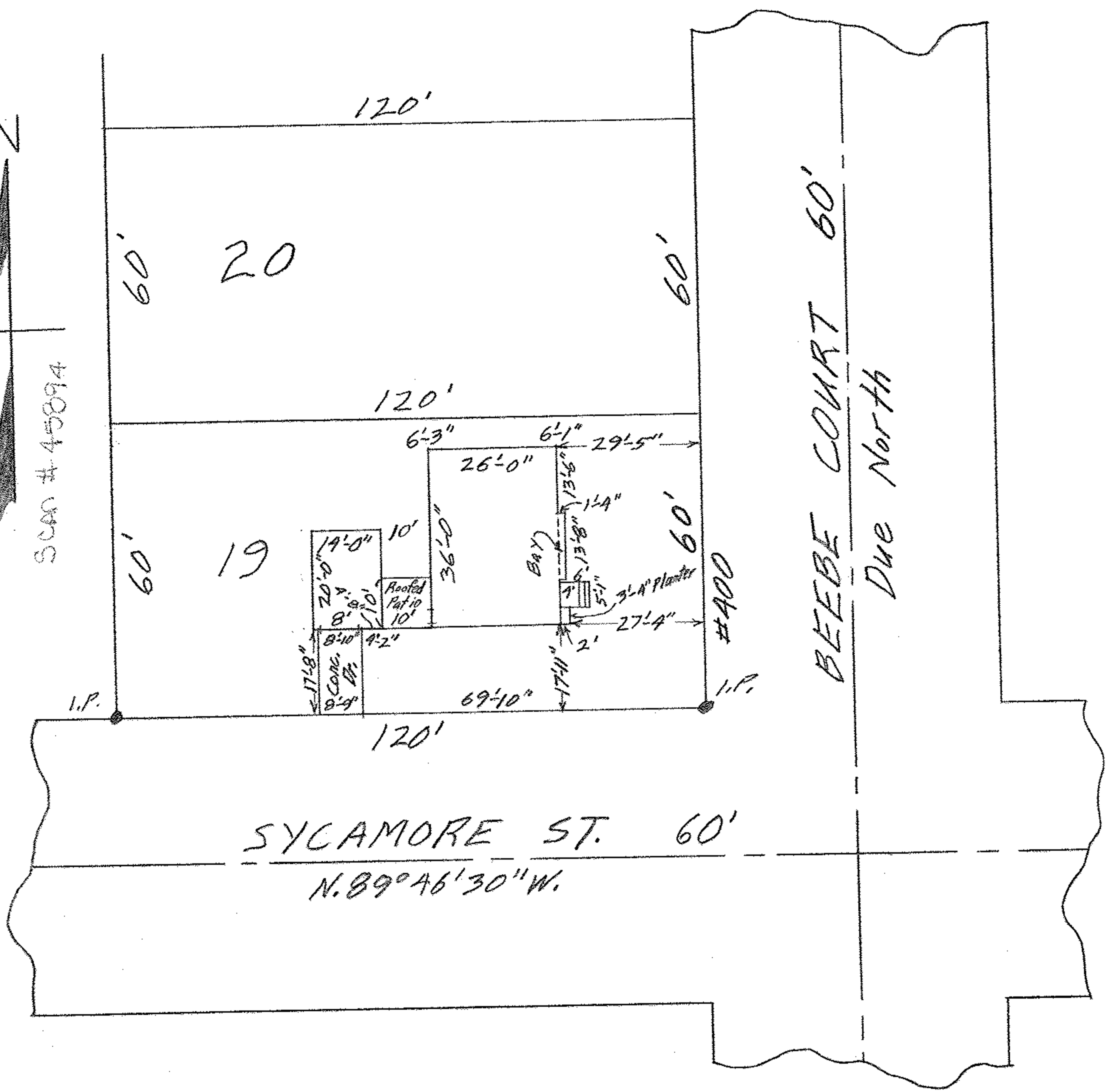


06-25-020-101-008  
6-70



Scan # 45894



MAP OF SUB-LOT NO. 19

"K. D." SUB'D. VOL. 17 PG. 41 PLATS  
 O.L. 20 EAST OF RIVER ELYRIA TWP.  
 ELYRIA CITY - LORAIN COUNTY - OHIO  
 SCALE: 1" = 30' DEC. 17 - 1963 4:15 P.M.

Gary E. Penfound REG. SURVEYOR

George W. & Ruth A. Long N W