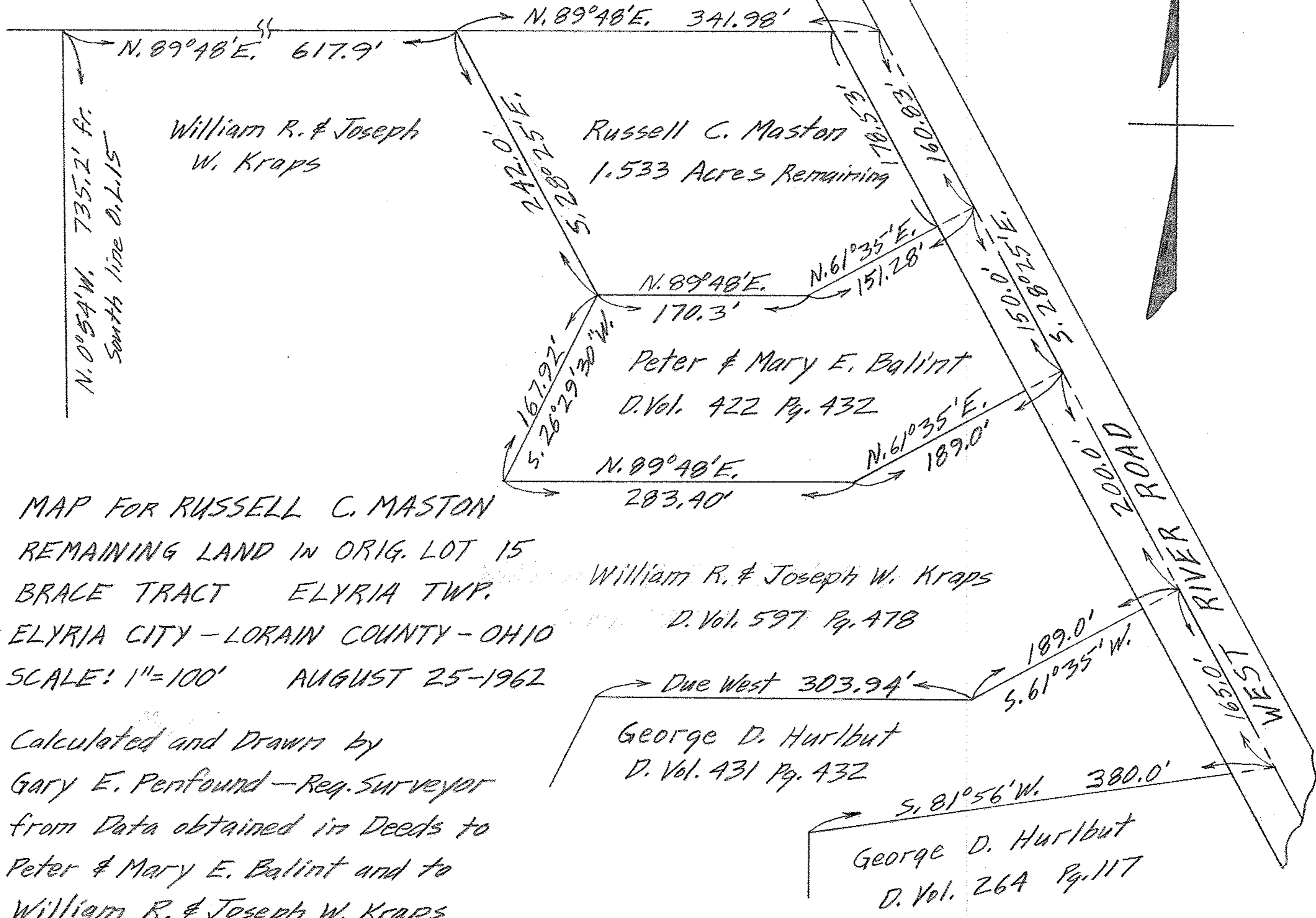


06-25-015-102-004,009,010,013,014,022

6-105
SCAN # 45865

Lewis F. Wright D. Vol. 53 Pg. 106



MAP FOR RUSSELL C. MASTON
 REMAINING LAND IN ORIG. LOT 15
 BRACE TRACT ELYRIA TWP.
 ELYRIA CITY - LORAIN COUNTY - OHIO
 SCALE: 1"=100' AUGUST 25-1962

Calculated and Drawn by
 Gary E. Penfound - Reg. Surveyor
 from Data obtained in Deeds to
 Peter & Mary E. Balint and to
 William R. & Joseph W. Kraps

William R. & Joseph W. Kraps
 D. Vol. 597 Pg. 478

George D. Hurlbut
 D. Vol. 431 Pg. 432

George D. Hurlbut
 D. Vol. 264 Pg. 117