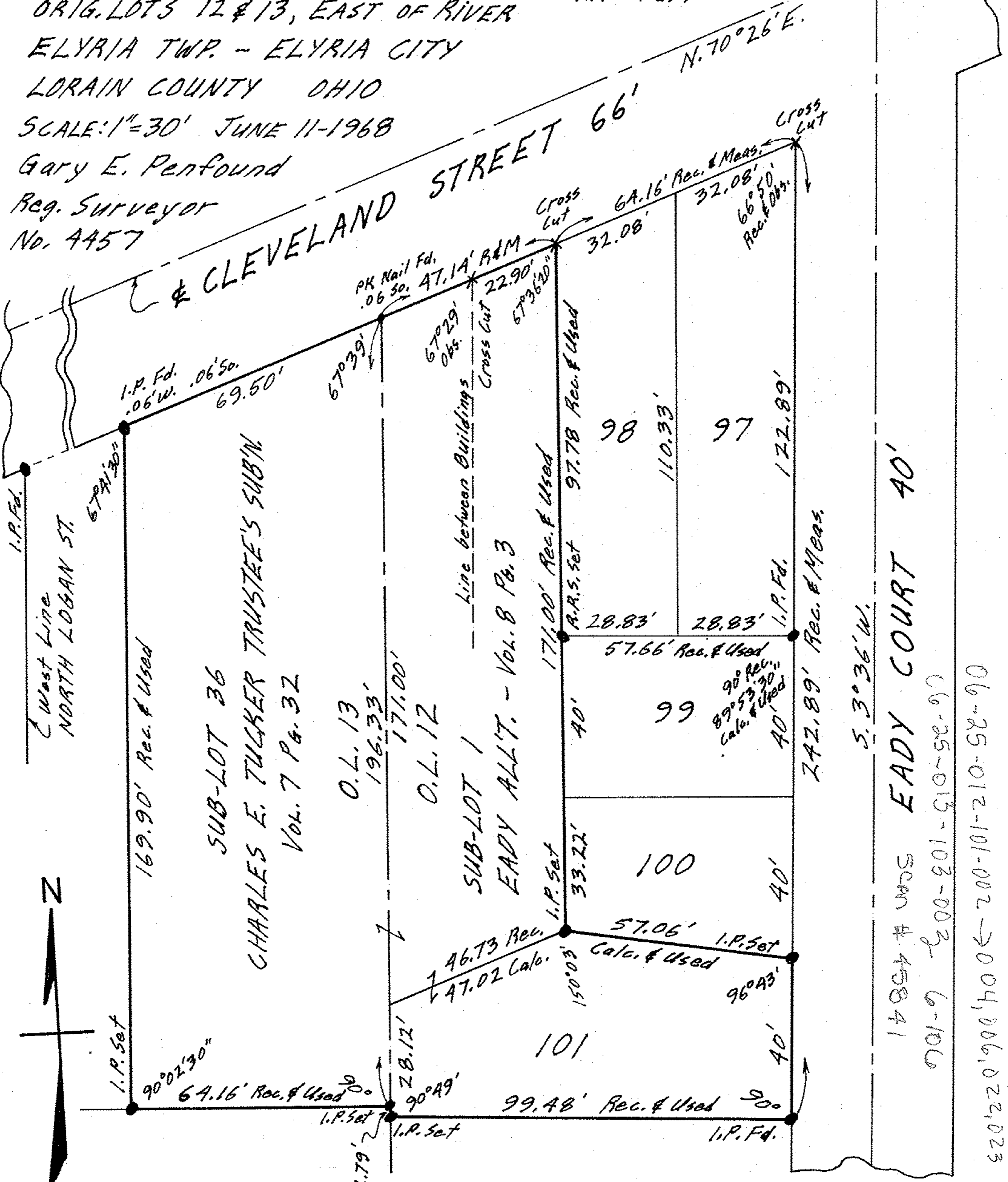


PLAT OF SURVEYS FOR
BEARINGS, INC.

ORIG. LOTS 12 & 13, EAST OF RIVER
ELYRIA TWP. - ELYRIA CITY
LORAIN COUNTY OHIO
SCALE: 1" = 30' JUNE 11-1968
Gary E. Penfound
Reg. Surveyor
No. 4457

NOTE: Sub-Lots 97-101 in
THE ABBEY ALL'T.
VOL. 10 Pg. 1



EADY COURT 40'

5.3°36'W.

14854 Scan # 45841
701-9 200-201-510-52-97
06-25-013-103-002
06-25-012-101-002-2004,006,022,023