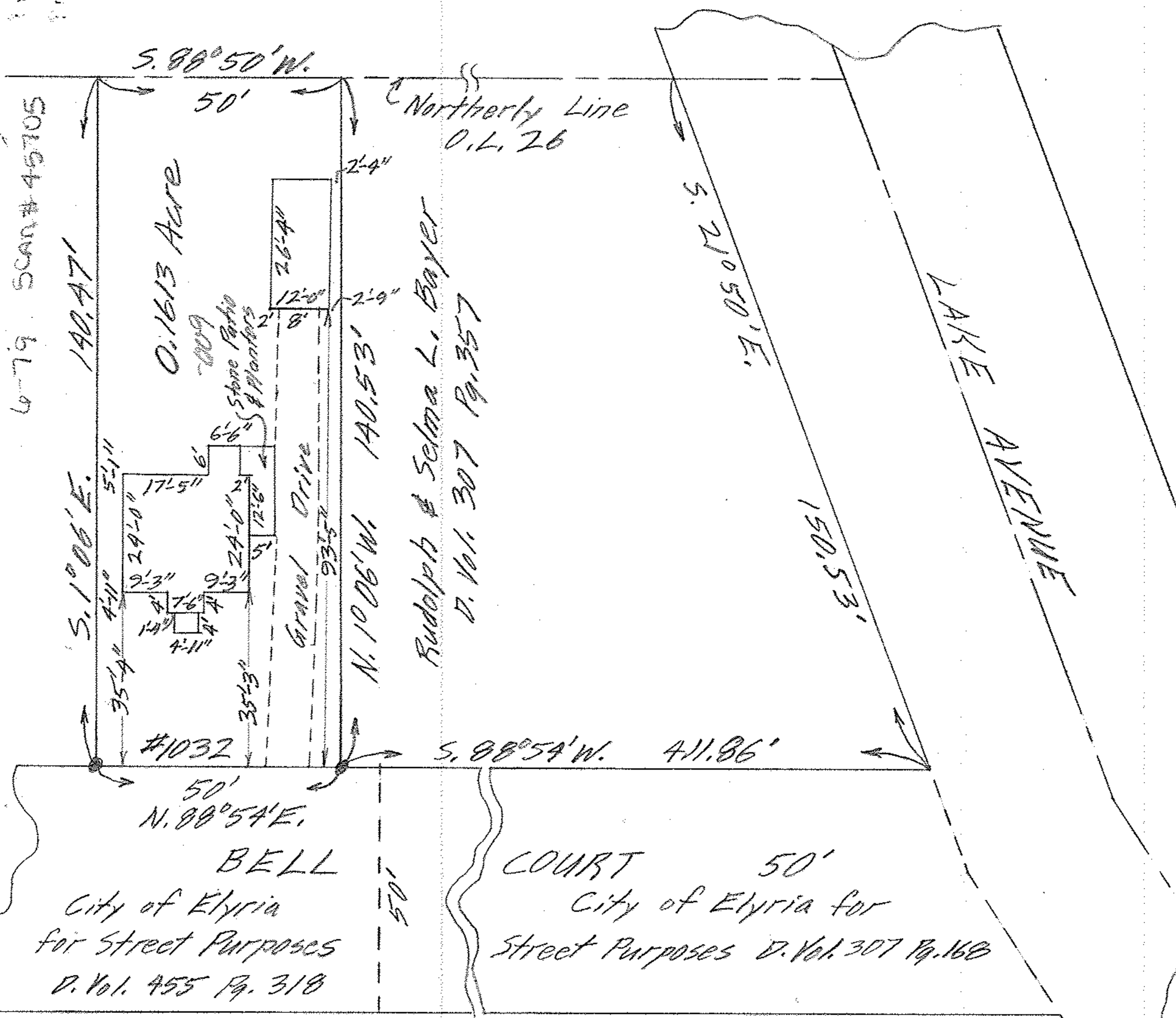


00-24-020-101-009
6-79 SCAN # 45705



S. 88° 50' W.

50'

Northerly Line
O.L. 26

S. 1° 06' E.

0.1613 Acre

2.6-4"

Stone Paths
& Planters

Gravel Drive

N. 10° 06' W.

Rudolph & Selma L. Bayer

D. Vol. 307 Pg. 357

S. 21° 50' E.

LAKE AVENUE

150.53'

#1032

S. 88° 54' W. 411.86'

50'
N. 88° 54' E.

BELL
City of Elyria
for Street Purposes
D. Vol. 455 Pg. 318

COURT 50'
City of Elyria for
Street Purposes D. Vol. 307 Pg. 168

00-24-020-101-009

MAP OF PART OF ORIG. LOT 26,
WEST OF BLACK RIVER, ELYRIA TWP.
ELYRIA CITY - LORAIN COUNTY - OHIO
SCALE: 1" = 30' SEPT. 8, 1961 11:00 A.M.
Gary E. Penfound REG. SURVEYOR

Robert W. & Jeanne D. Vrbanac
to Lois J. Williams
W W

