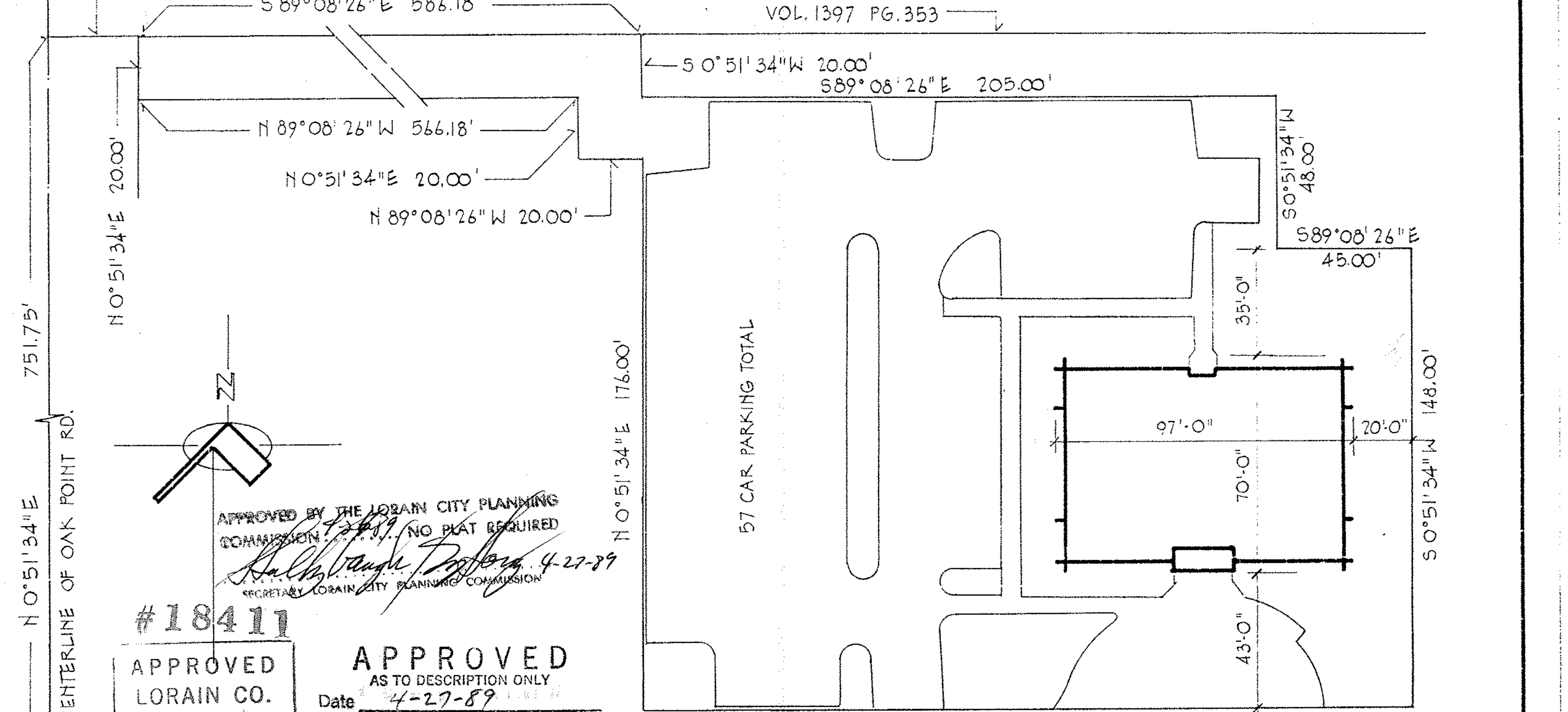


5-00-020-A #18411 05-00-020-000



CENTERLINE OF OAK POINT RD.
N 0° 51' 34" E 751.75'

NORTH LINE GREENTREE PROPERTIES
VOL. 1397 PG. 353

N 0° 51' 34" E 20.00'

N 89° 08' 26" W 566.18'

N 0° 51' 34" E 20.00'

N 89° 08' 26" W 20.00'

S 0° 51' 34" W 20.00'
S 89° 08' 26" E 205.00'

S 0° 51' 34" W 48.00'

S 89° 08' 26" E 45.00'

57 CAR PARKING TOTAL

N 0° 51' 34" E 176.00'

S 0° 51' 34" W 148.00'

N 89° 08' 26" W 250.00'

APPROVED BY THE LORAIN CITY PLANNING
COMMISSION. NO PLAT REQUIRED

Hal Stange
SECRETARY LORAIN CITY PLANNING COMMISSION 4-27-89

#18411

APPROVED
LORAIN CO.
MAP DEPT.

DATE 5-2-89

PAGE 5-00-020-A

ORIGINAL CENTERLINE CAROL-FRANCIS
COOPER FOSTER PARK ROAD

VOID AFTER # 18411

APPROVED
AS TO DESCRIPTION ONLY

Date 4-27-89
City of Lorain

Per *Lowell A. Fernald*
Engineering Dept.

EXHIBIT OF LOT SPLIT
PART OF O.L. NO. 20, AMHERST TWP.
CITY OF LORAIN, OHIO

APRIL 1989 SCALE 1"=40'-0"

