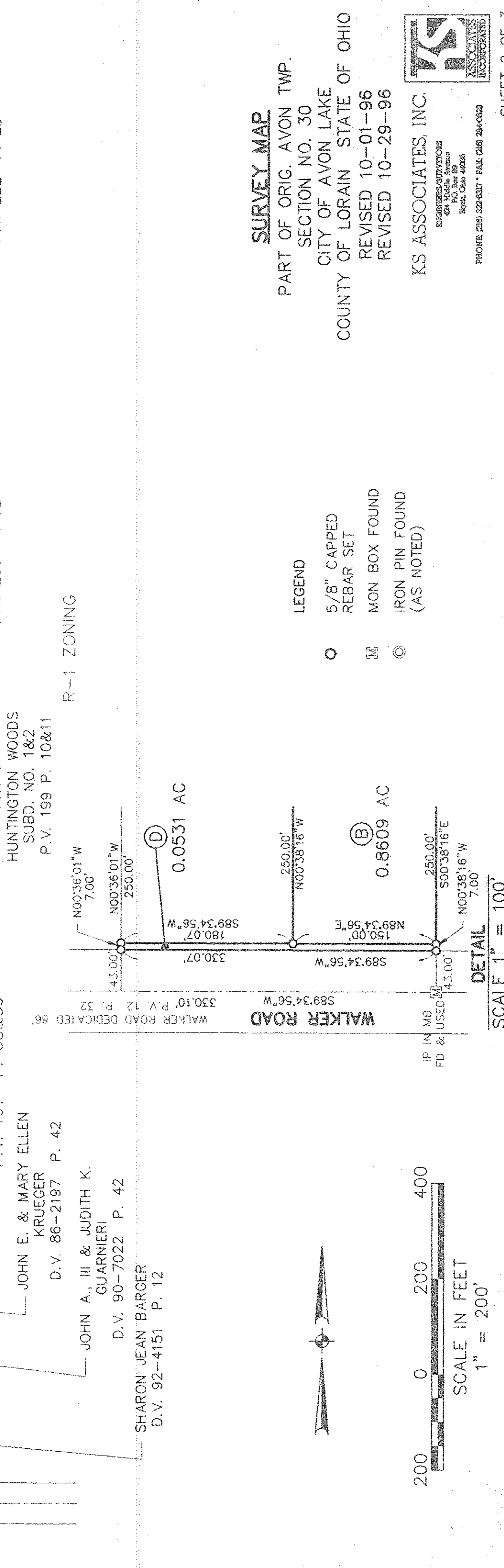
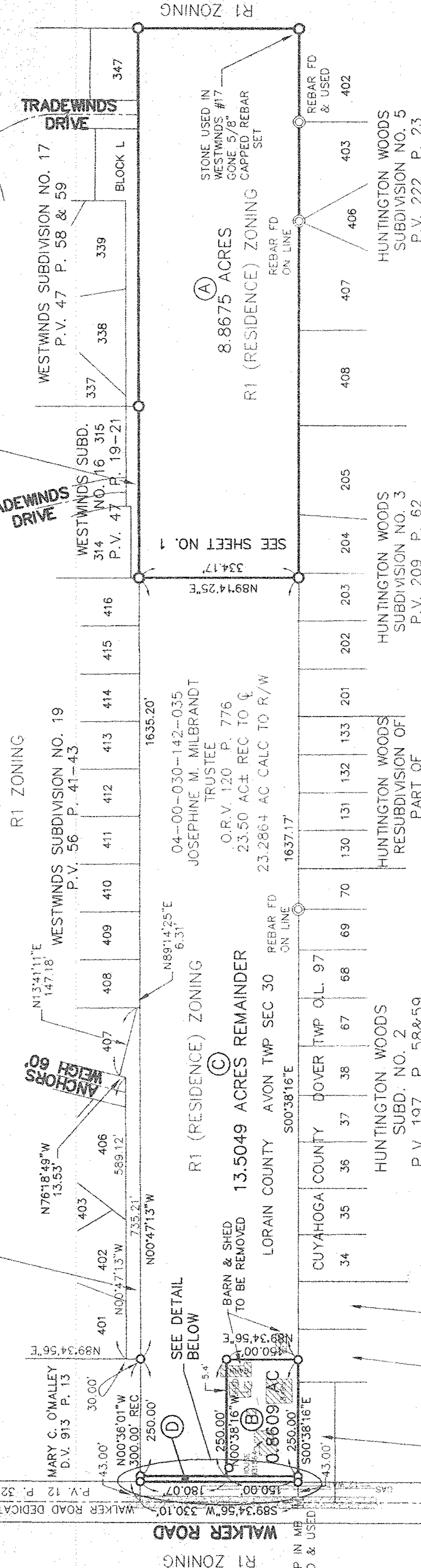


04-00-030-142-166
WESTWINDS JOINT VENTURE
O.R.V. 94 P. 561

04-00-030-142-166
WESTWINDS JOINT VENTURE
O.R.V. 94 P. 561



SURVEY MAP
PART OF ORIG. AVON TWP.
SECTION NO. 30
CITY OF AVON LAKE
COUNTY OF LORAIN STATE OF OHIO
REVISED 10-01-96
REVISED 10-29-96

- LEGEND**
- 5/8" CAPPED REBAR SET
 - Ⓜ MON BOX FOUND
 - Ⓞ IRON PIN FOUND (AS NOTED)

KS ASSOCIATES, INC.
ENGINEERS/SURVEYORS
424 Middle Avenue
P.O. Box 89
Elyria, Ohio 44028
PHONE (216) 322-6317 • FAX (216) 204-0623

SCALE 1" = 100'

SCALE IN FEET
1" = 200'

R1 ZONING

R-1 ZONING

(A) 8.8675 ACRES
R1 (RESIDENCE) ZONING

(C) 13.5049 ACRES REMAINDER
R1 (RESIDENCE) ZONING

(D) 0.0531 AC

(B) 0.8609 AC

MARY C. O'MALLEY
D.V. 913 P. 13

SEE DETAIL BELOW

BARN & SHED TO BE REMOVED

(B) 0.8609 AC

(D)

WALKER ROAD

IP IN MB FD & USED

WALKER ROAD DEDICATED 86 P.V. 12 P. 32

SHARON JEAN BARGER
D.V. 92-4151 P. 12

JOHN A., III & JUDITH K. GUARNIERI
D.V. 90-7022 P. 42

JOHN E. & MARY ELLEN KRUEGER
D.V. 86-2197 P. 42

HUNTINGTON WOODS SUBD. NO. 2
P.V. 197 P. 58&59

CUYAHOGA COUNTY DOVER TWP O.L. 97

34 35 36 37 38 67 68 69 70

HUNTINGTON WOODS RESUBDIVISION OF PART OF HUNTINGTON WOODS SUBD. NO. 1&2
P.V. 199 P. 10&11

HUNTINGTON WOODS SUBDIVISION NO. 3
P.V. 209 P. 62

HUNTINGTON WOODS SUBDIVISION NO. 5
P.V. 222 P. 23

HUNTINGTON WOODS SUBD. NO. 16
P.V. 47 P. 19-21

WESTWINDS SUBD. NO. 16
P.V. 47 P. 19-21

WESTWINDS SUBDIVISION NO. 17
P.V. 47 P. 58 & 59

BRUNSWICK DRIVE

TRADEWINDS DRIVE

TRADEWINDS DRIVE

REBAR FD ON LINE

REBAR FD & USED

SEE SHEET NO. 1

89°14'25"E

1637.17'

1635.20'

04-00-030-142-035

JOSEPHINE M. MILBRANDT TRUSTEE

O.R.V. 120 P. 776

23.50 AC ± REC TO C

23.2864 AC CALC TO R/W

REBAR FD ON LINE

334.17'

89°14'25"E

147.18'

N13°41'11"E

147.18'

N76°18'49"W

13.53'

589.12'

589.3456'E

30.00'

300.00' REC

250.00'

43.00'

180.07'

150.00'

589.3456"W

330.10' P.V. 12 P. 32

WALKER ROAD DEDICATED 86

IP IN MB FD & USED

500'38'16"E

250.00'

43.00'

180.07'

589.3456"W

330.07'

43.00'

IP IN MB FD & USED

500'38'16"E

250.00'

43.00'

180.07'

589.3456"W

330.07'

43.00'

IP IN MB FD & USED

500'38'16"E

250.00'

43.00'

180.07'

589.3456"W

330.07'

43.00'

IP IN MB FD & USED

500'38'16"E

250.00'

43.00'

180.07'

589.3456"W

330.07'

43.00'

IP IN MB FD & USED

500'38'16"E

250.00'

43.00'

180.07'

589.3456"W

330.07'

43.00'

IP IN MB FD & USED

500'38'16"E

250.00'

43.00'

180.07'

589.3456"W

330.07'

43.00'

IP IN MB FD & USED

500'38'16"E

250.00'

43.00'

180.07'

589.3456"W

330.07'

43.00'

IP IN MB FD & USED

500'38'16"E

250.00'

43.00'

180.07'

589.3456"W

330.07'

43.00'

IP IN MB FD & USED

500'38'16"E

250.00'

43.00'

180.07'

589.3456"W

330.07'

43.00'

IP IN MB FD & USED

500'38'16"E

250.00'

43.00'

180.07'

589.3456"W

330.07'

43.00'

IP IN MB FD & USED

500'38'16"E

250.00'

43.00'

180.07'

589.3456"W

330.07'

43.00'

IP IN MB FD & USED

500'38'16"E

250.00'

43.00'

180.07'

589.3456"W

330.07'

43.00'

IP IN MB FD & USED

500'38'16"E

250.00'

43.00'

180.07'

589.3456"W

330.07'

43.00'

IP IN MB FD & USED

500'38'16"E

250.00'

43.00'

180.07'

589.3456"W

330.07'

43.00'

IP IN MB FD & USED

500'38'16"E

250.00'

43.00'

180.07'

589.3456"W

330.07'

43.00'

IP IN MB FD & USED

500'38'16"E

250.00'

43.00'

180.07'

589.3456"W

330.07'

43.00'

IP IN MB FD & USED

500'38'16"E

250.00'

43.00'

180.07'

589.3456"W

330.07'

43.00'

IP IN MB FD & USED

500'38'16"E

250.00'

43.00'

180.07'

589.3456"W

330.07'

43.00'

IP IN MB FD & USED