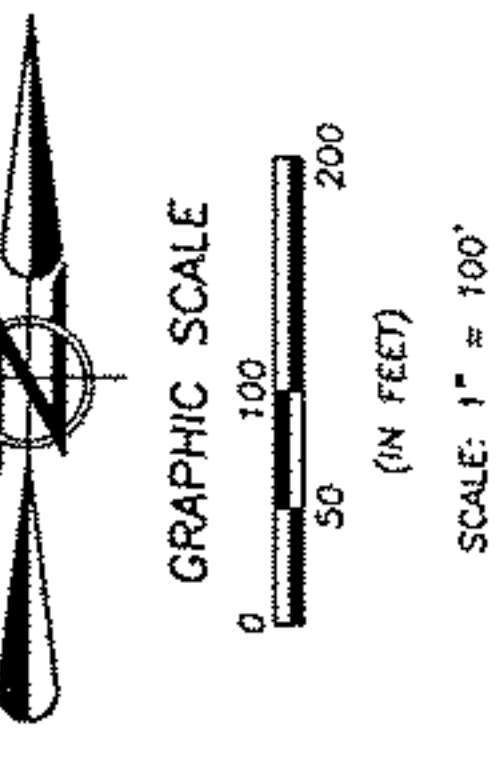


MEADOW LAKES SUBDIVISION NUMBER 8 - REMAINDER E  
 MEADOW LAKES SUBDIVISION NUMBER 9 - REMAINDERS 9A, 9B, 9C, 9D,

APPROVED  
 LORAIN CO.  
 MAP DEPT  
 DATE 10-6-10  
 PAGE MEADOW  
 LAKES  
 BY R. MAINES  
 #10-02113-D

07-00-040-000-019  
 07-00-033-106-101  
 107-016  
 108-017  
 108-016  
 SCAN # 45407



BASIS OF BEARINGS.  
 A PORTION OF THE CENTERLINE OF BARBERS ROAD.  
 AS SURVEYED IN MAY OF 2003

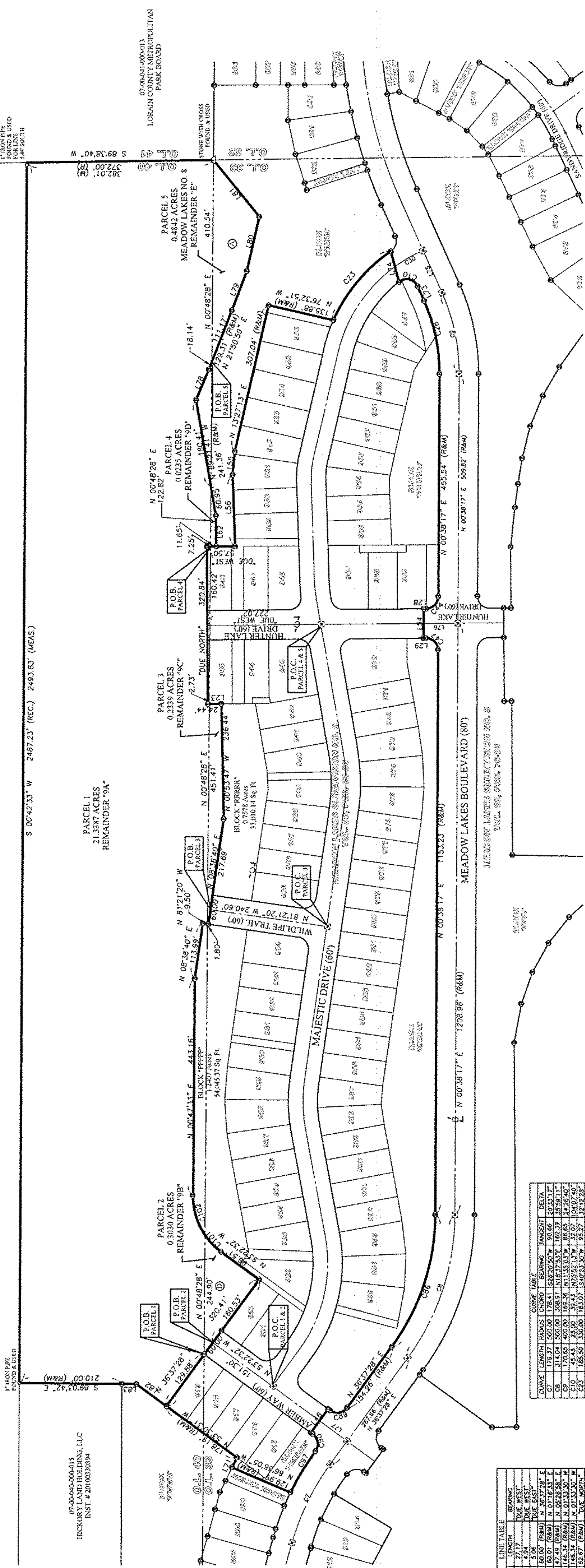
- LEGEND:
- IRON PIN/PIPE FOUND AS NOTED
  - 5/8" REBAR SET WITH CAP STAMPED "BRAMHALL 8073"
  - 5/8" REBAR FOUND WITH CAP STAMPED "BRAMHALL 8073"
  - ⊠ MONUMENT BOX FOUND
  - ⊞ MONUMENT BOX SET
  - (REC.) (R) RECORD
  - (MEAS.) (M) MEASURED

TABLE OF OWNERSHIP

①	07-00-033-106-016 FID PROPERTIES, LLC
②	07-00-033-108-017 FID PROPERTIES, LLC
③	07-00-033-107-016 FID PROPERTIES, LLC
④	07-00-033-106-001 FID PROPERTIES, LLC

07-00-033-106-008  
 LORAIN COUNTY METRO PARKS  
 O.R. VOLUME 1057, PAGE 708

07-00-040-000-013  
 HICKORY LAKES SUBDIVISION, LLC  
 INST. # 2010030094



CURVE TABLE

CURVE	LENGTH	CHORD	BEARING	TANGENT	DELTA
C1	114.64	200.00	N 89°27'28" E	100.00	203.11
C2	114.64	200.00	N 89°27'28" E	100.00	203.11
C3	76.65	100.00	N 113°53'13" W	66.65	142.40
C4	45.43	50.00	S 89°27'28" E	33.33	66.65
C5	155.50	300.00	N 89°27'28" E	100.00	203.11
C6	155.50	300.00	N 89°27'28" E	100.00	203.11
C7	38.39	50.00	N 89°27'28" E	33.33	66.65
C8	38.39	50.00	N 89°27'28" E	33.33	66.65
C9	128.26	250.00	N 89°27'28" E	100.00	203.11
C10	128.26	250.00	N 89°27'28" E	100.00	203.11
C11	47.72	100.00	N 89°27'28" E	33.33	66.65
C12	47.72	100.00	N 89°27'28" E	33.33	66.65

LINE TABLE

LINE	BY	BEARING	TO BE WEST	TO BE EAST
L26	27.17			
L27	4.34			
L28	5.08			
L29	60.00	N 89°27'28" E		
L30	100.00	N 89°27'28" E		
L31	47.72	N 89°27'28" E		
L32	47.72	N 89°27'28" E		
L33	128.26	N 89°27'28" E		
L34	128.26	N 89°27'28" E		
L35	47.72	N 89°27'28" E		
L36	47.72	N 89°27'28" E		
L37	70.00	N 89°27'28" E		
L38	70.00	N 89°27'28" E		
L39	66.65	N 89°27'28" E		
L40	114.64	N 89°27'28" E		
L41	114.64	N 89°27'28" E		
L42	76.65	N 89°27'28" E		
L43	76.65	N 89°27'28" E		

MEADOW LAKES SUBDIVISION NUMBER 8 - REMAINDER E  
 MEADOW LAKES SUBDIVISION NUMBER 9 - REMAINDERS 9A, 9B, 9C & 9D  
**LEGAL DESCRIPTION EXHIBIT**  
 CITY OF NORTH RIDGEVILLE, COUNTY OF LORAIN, STATE OF OHIO

PREPARED FOR:  
 FID PROPERTIES, LLC  
 37000 CENTER RIDGE RD.  
 NORTH RIDGEVILLE, OHIO 44039

BRAMHALL  
 ENGINEERING AND SURVEYING CO., INC.  
 801 MOORE ROAD AVON, OHIO 44011  
 (440) 934-7878 (440) 934-7879 FAX

DATE: 10/6/10  
 DRAWN BY: BMM  
 CHECKED BY: MCB

DATE: 10/6/10  
 DRAWN BY: BMM  
 CHECKED BY: MCB

SHEET 1 OF 1  
 JOB NO. 06-2430-13-11