

# PLAT OF SURVEY - PARCEL SPLIT & ADJOINMENT

Situated in the State of Ohio, County of Lorain, City of North Ridgeville, known as being the whole of Sublot No. 425 and Sublot No. 426 of RIDGEFIELD HOMES, INC., SUBDIVISION No. 8 as shown by the plat recorded in Volume 77, Page 1 of PLATS and a part of PARK AREA "E" of RIDGEFIELD HOMES, INC., SUBDIVISION No. 2 as shown by the plat recorded in Volume 57, Page 70 of PLATS.

made for and at the instance of:  
**RIDGEFIELD HOMES, INC., owner**  
**BOB SCHMITT HOMES, INC., builder**

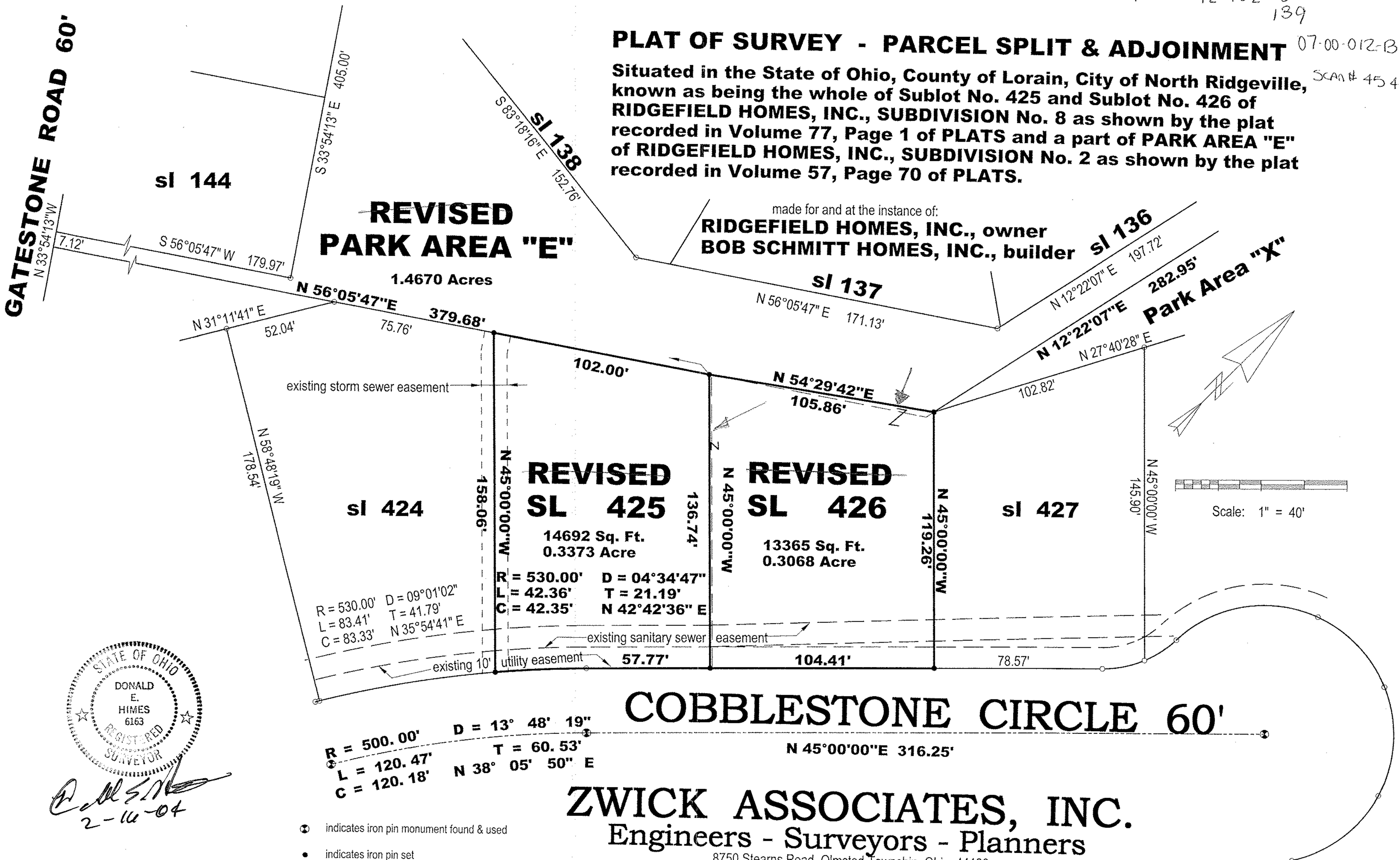
**GATESTONE ROAD 60'**

**REVISED PARK AREA "E"**  
1.4670 Acres

**REVISED SL 425**  
14692 Sq. Ft.  
0.3373 Acre

**REVISED SL 426**  
13365 Sq. Ft.  
0.3068 Acre

**Park Area "X"**  
282.95'

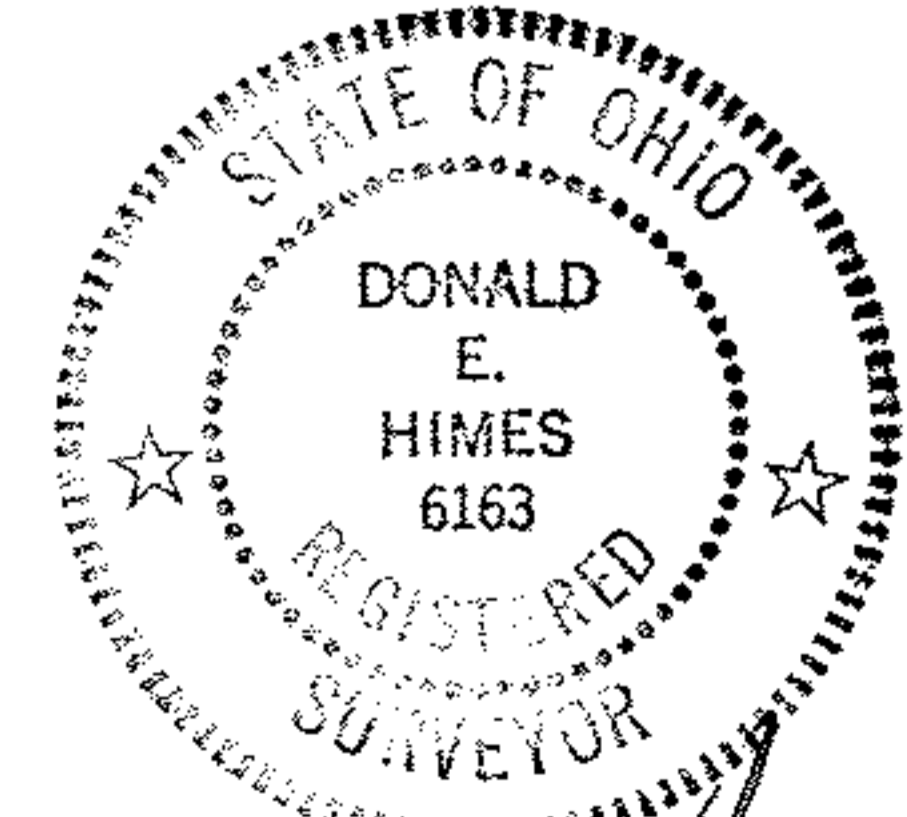


R = 530.00' D = 09°01'02"  
L = 83.41' T = 41.79'  
C = 83.33' N 35°54'41" E

R = 530.00' D = 04°34'47"  
L = 42.36' T = 21.19'  
C = 42.35' N 42°42'36" E

R = 500.00' D = 13° 48' 19"  
L = 120.47' T = 60.53'  
C = 120.18' N 38° 05' 50" E

**COBBLESTONE CIRCLE 60'**  
N 45°00'00"E 316.25'



*Donald E. Himes*  
2-16-04

- ⊙ indicates iron pin monument found & used
- indicates iron pin set

**ZWICK ASSOCIATES, INC.**  
Engineers - Surveyors - Planners

8750 Stearns Road, Olmsted Township, Ohio 44138  
Tel: (440) 235 - 2729 Fax: (440) 235 - 0604