



Scan# 49358

03-00-103-B

03-00-103.107.017,005

MAP OF SUB-LOTS NOS. 12-13 & 14

BLOCK 6 - CITY VIEW ALLOT. Vol. 6 Pg. 8

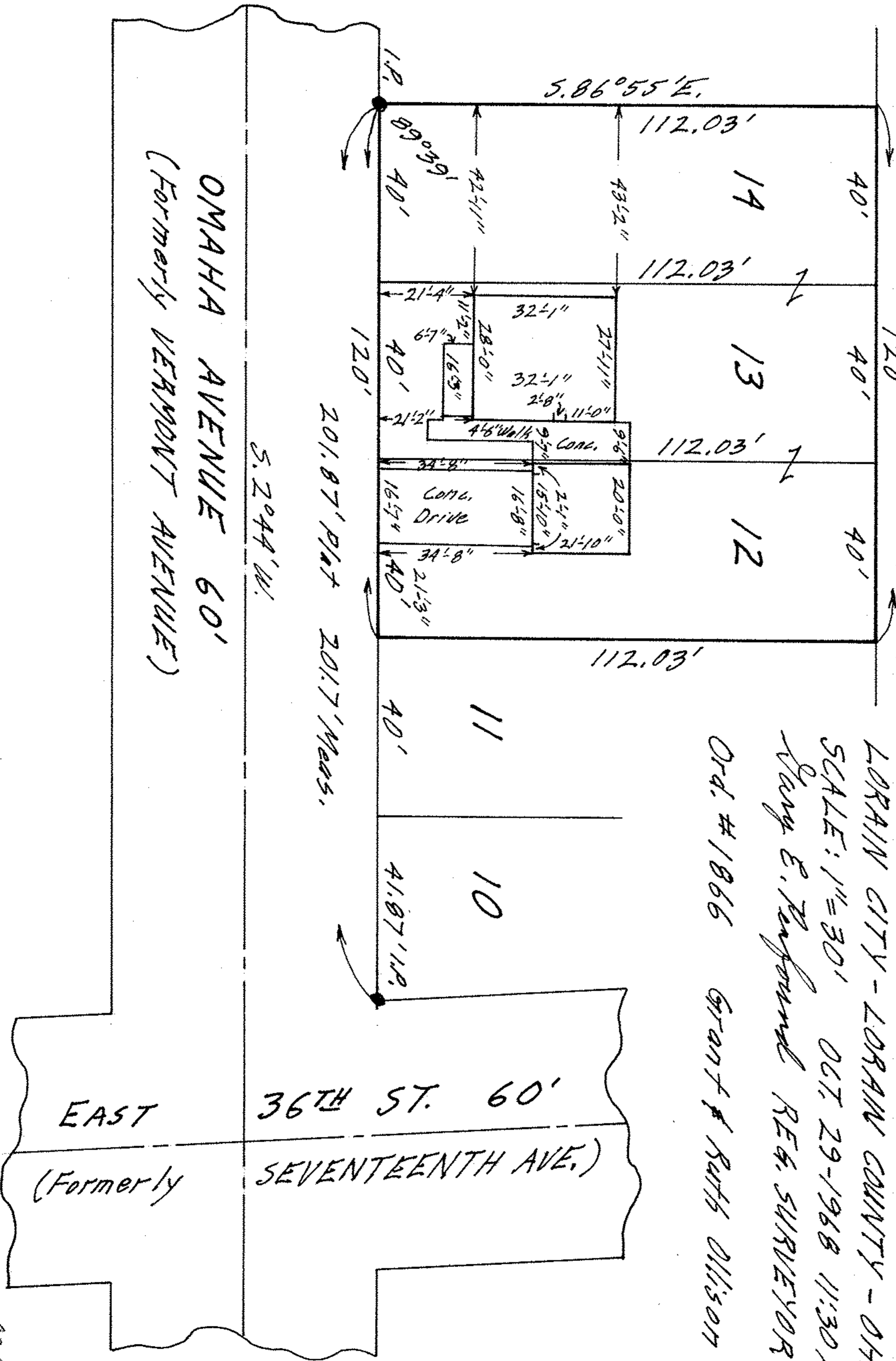
ORIG. LOT 103 SHEFFIELD TWP.

LORAIN CITY - LORAIN COUNTY - OHIO

SCALE: 1"=30' OCT. 29-1968 11:30 A.M.

Ray E. Raymond REG. SURVEYOR

Ord. # 1866 Grant & Ruth Allison



OMAHA AVENUE 60'
(Formerly VERMONT AVENUE)

S. 2044' W.

201.87' Plat 201.7' Meas.

36TH ST. 60'
SEVENTEENTH AVE.
(Formerly SEVENTEENTH AVE.)

03-00-103