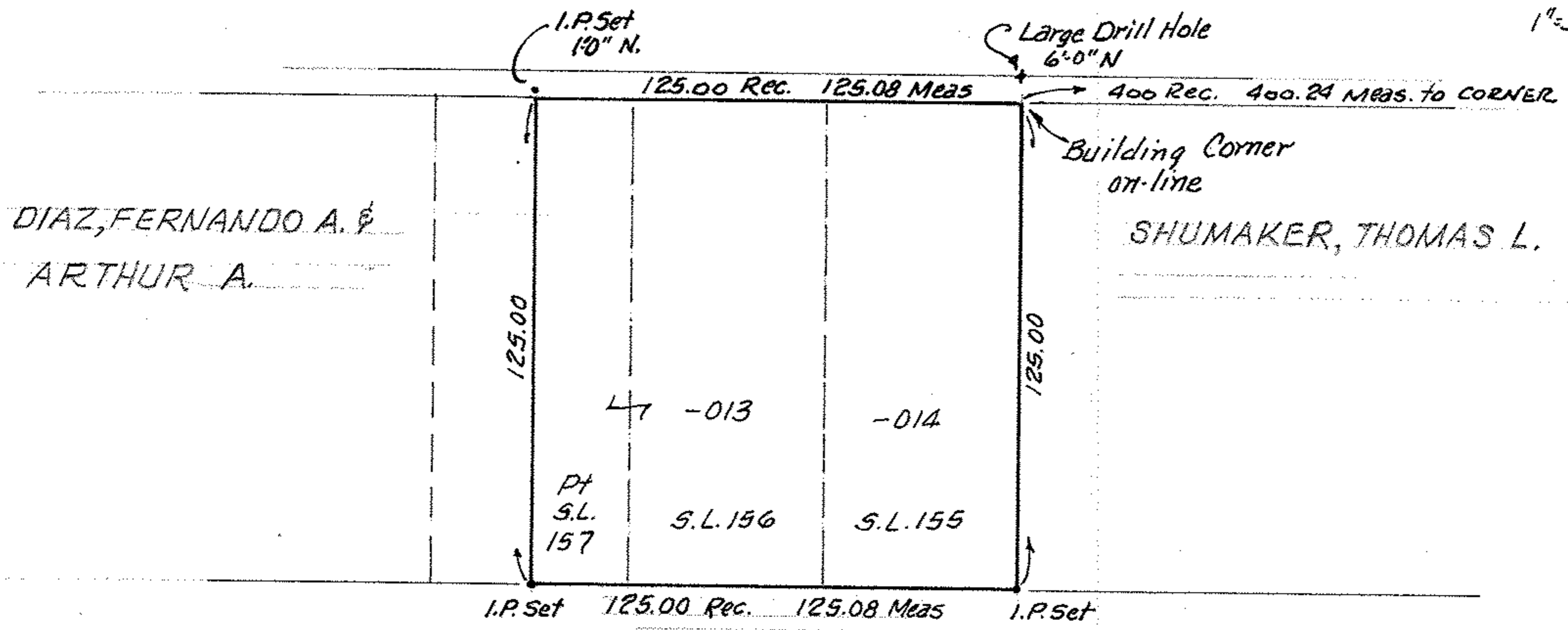


03-00-095-101-012-014

03-00-095-A

Scan # 45334

EAST 28th ST. 80'



DEED VOL 1306 - PG 460

PP # 03-00-095-101-013 & -014
 SUBLOTS # 155, 156 plus part of 157 of SHEFFIELD LAND
 CO'S SUBDIVISION NO. 1
 PLAT VOL. 4 PAGE 23
 PART of ORIG. SHEFFIELD TWP. LOT 95
 NOW in CITY of LORAIN , OHIO

THIS IS A PLAT OF SURVEY:
 FOR: BILL SCHUMAKER

Mc GLINCHY & ASSOCIATES INC.

OCT. 22, 1982

#8 27392