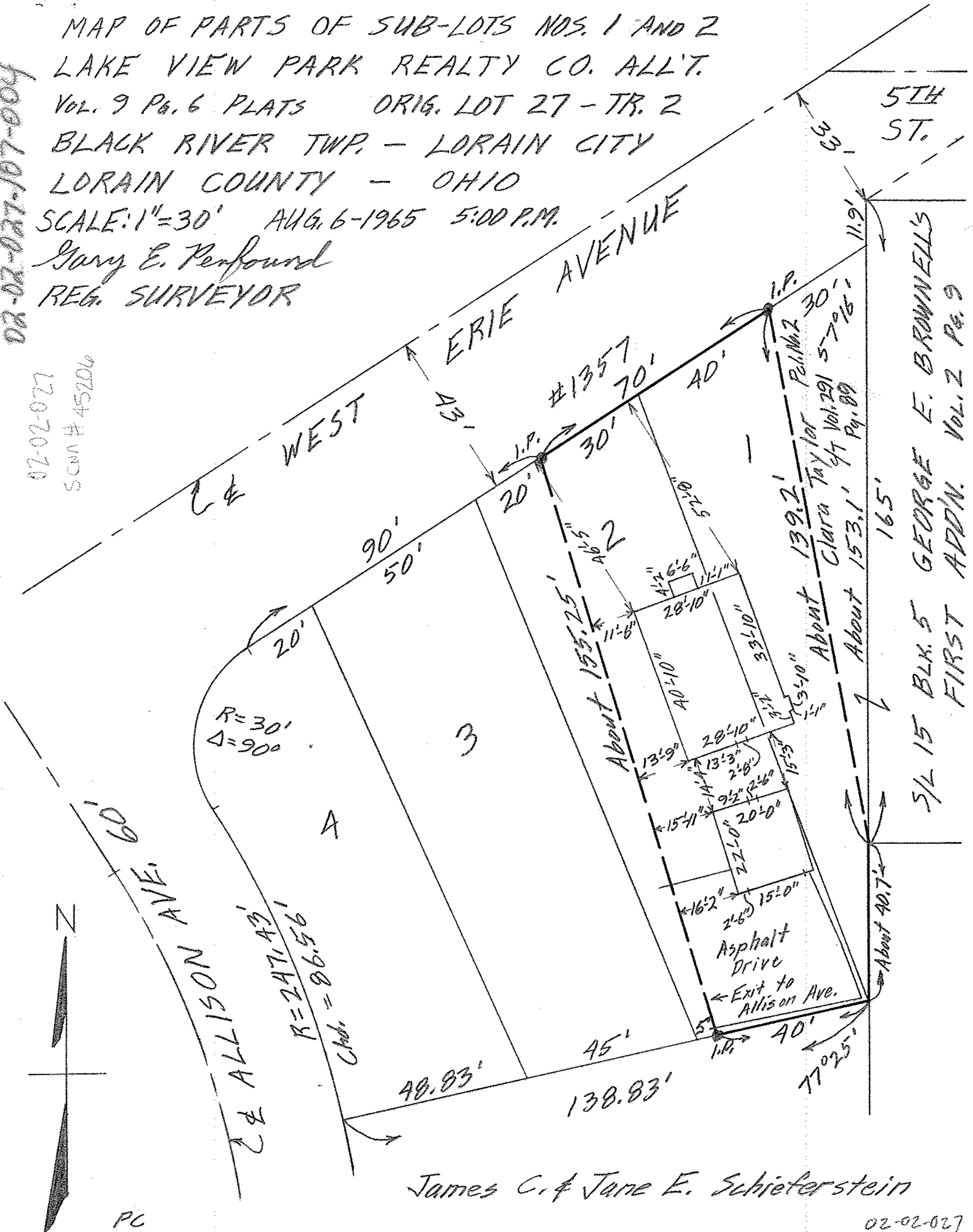


02-02-027-107-004

MAP OF PARTS OF SUB-LOTS NOS. 1 AND 2
 LAKE VIEW PARK REALTY CO. ALL'T.
 VOL. 9 Pg. 6 PLATS ORIG. LOT 27 - TR. 2
 BLACK RIVER TWP. - LORAIN CITY
 LORAIN COUNTY - OHIO
 SCALE: 1"=30' AUG. 6-1965 5:00 P.M.
 Gary E. Penfound
 REG. SURVEYOR

02-02-027
 SCNN # 45206



5/2 15 BLK. 5 GEORGE E. BROWNELL'S
 FIRST ADDN. VOL. 2 PG. 9

James C. & Jane E. Schieterstein

PC

02-02-027