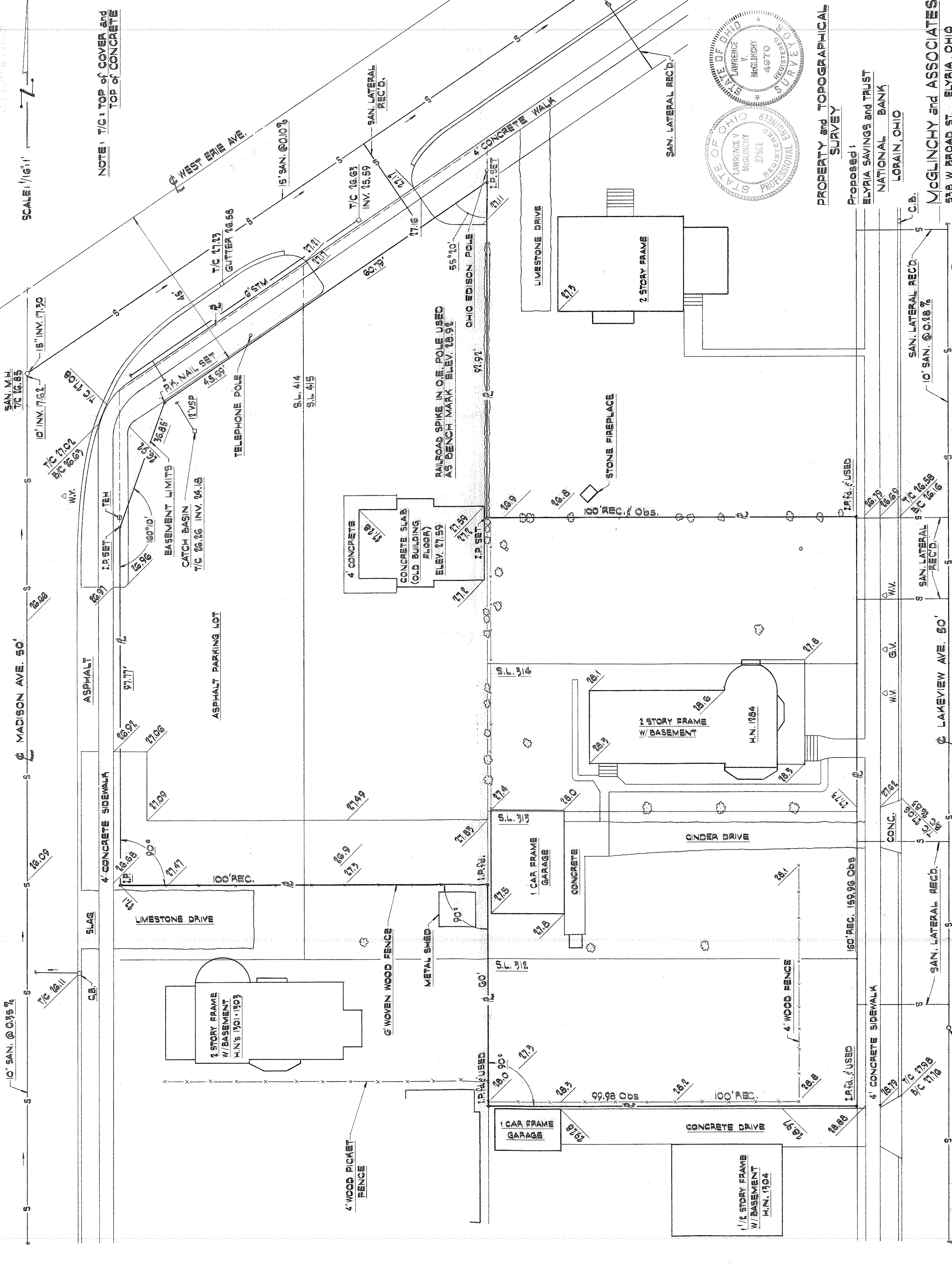
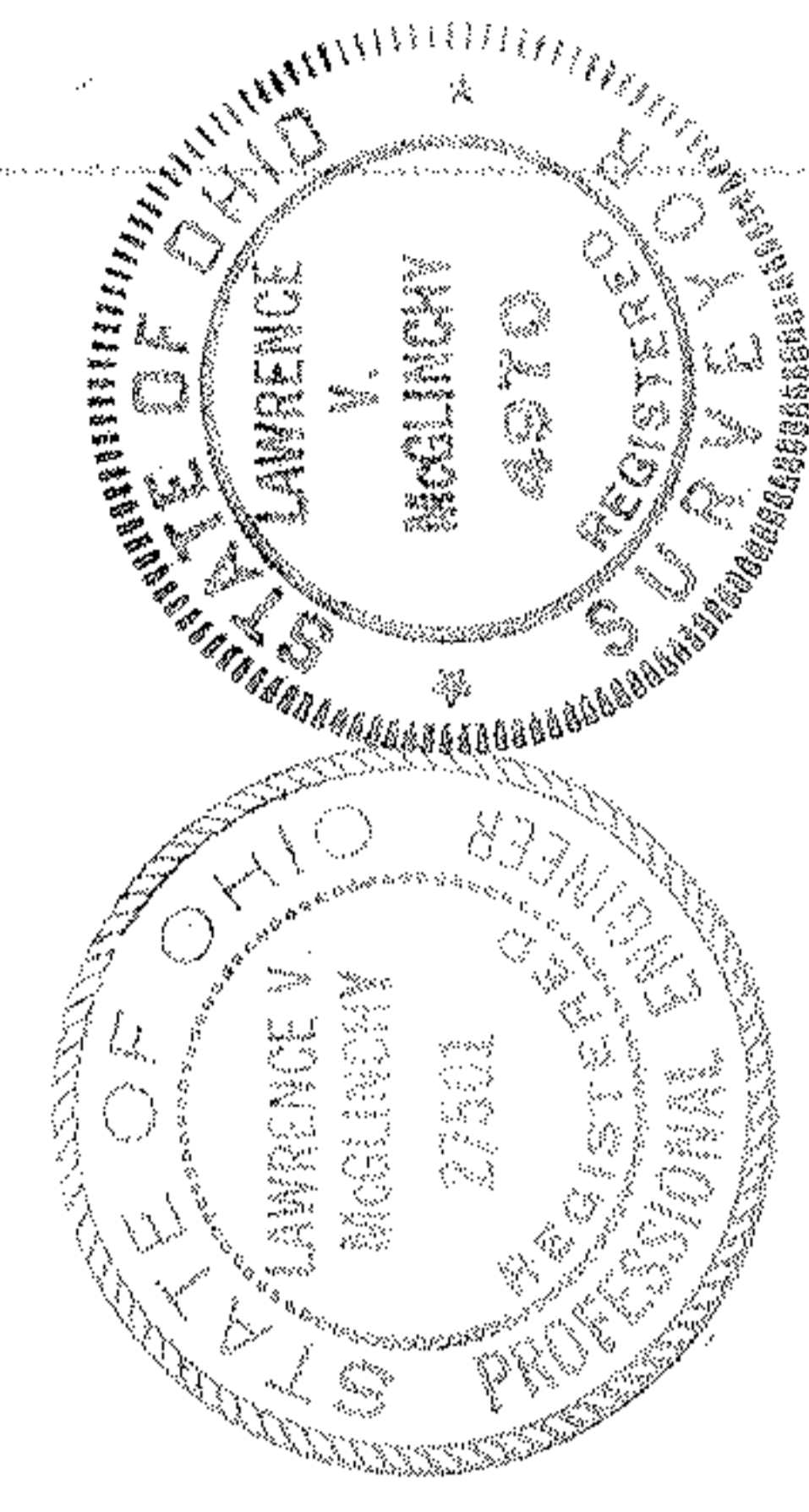


05-09-093-102-001



SCALE 1/16" = 1'

NOTE: T/C: TOP OF COVER and TOP OF CONCRETE



PROPERTY and TOPOGRAPHICAL SURVEY

Proposed by
ELYRIA SAVINGS and TRUST
NATIONAL BANK
LORAIN, OHIO

McGLINCHY and ASSOCIATES
578 W. BROAD ST. ELYRIA, OHIO
DECEMBER 15, 1975 JOB NO. 75576