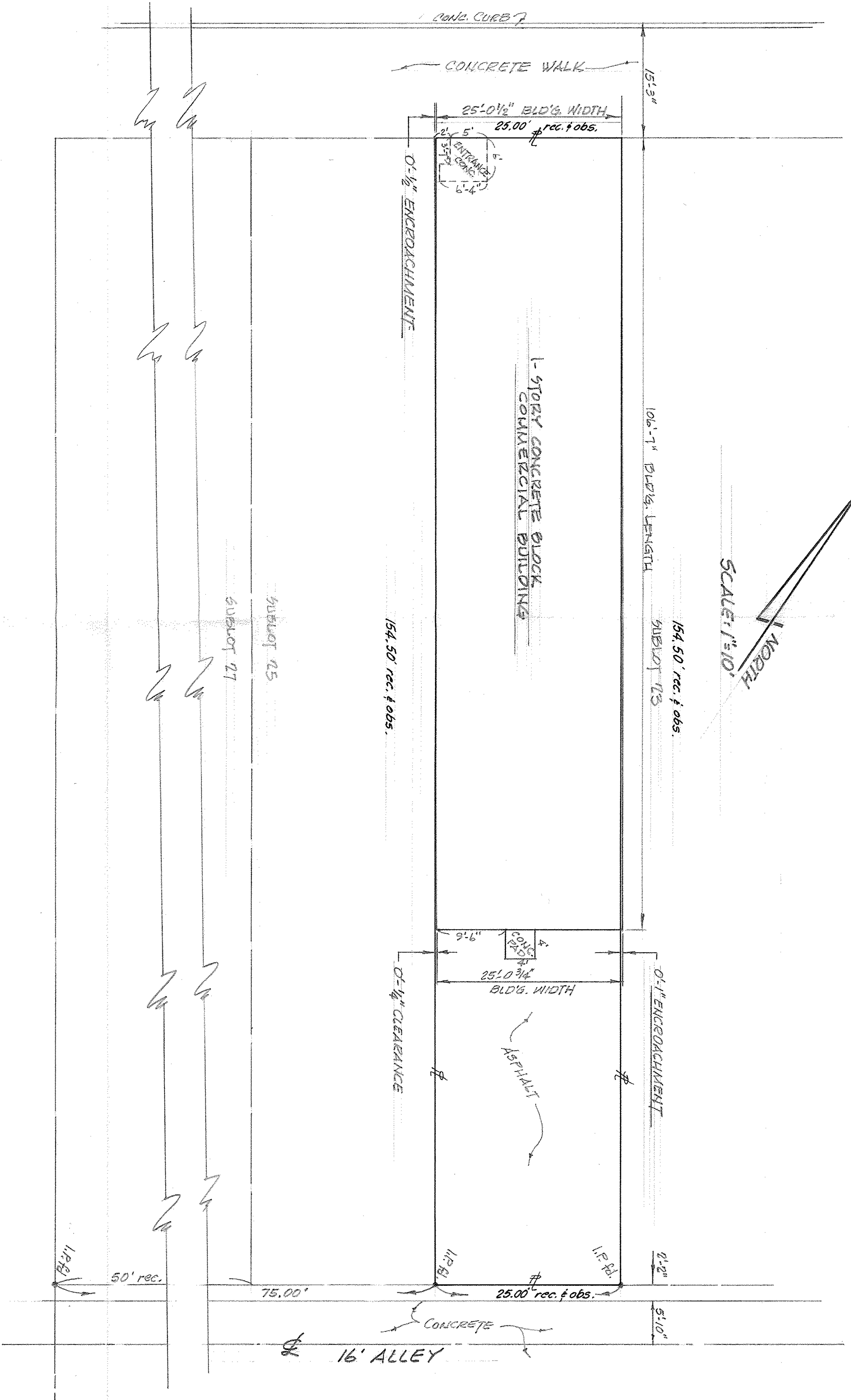


8<sup>th</sup> STREET - 66'

REID AVENUE - 66'



**MAP of SURVEY**  
 PREPARED FOR JEAN FENTON FIKKEL  
 PART of SUBLOT 25 in BLOCK No. 5 of SELAH CHAMBERLAIN  
 TRUSTEE ADDITION of PART of ORIGINAL BLACK RIVER TWP LOT 4, TRACT 1  
 CITY of LORAIN, LORAIN COUNTY, OHIO

McGLINCHY and ASSOCIATES  
 PROFESSIONAL ENGINEER and SURVEYORS  
 ELYRIA, OHIO  
 AUGUST, 1978 # 784036