

44979

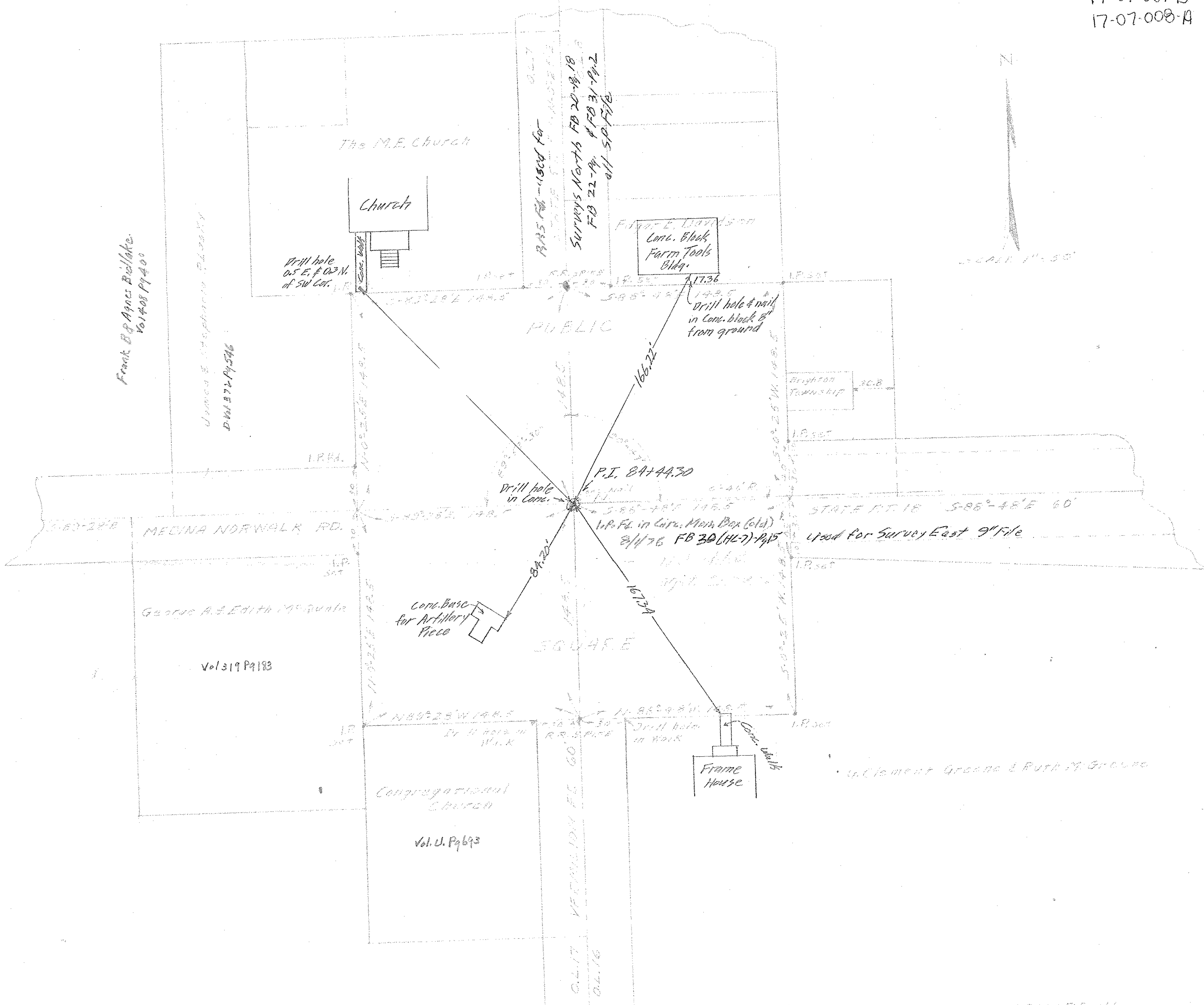
17-07-001-000-012

17-07-017-A

17-07-014-A

17-07-007-B

17-07-008-A



SURVEY OF PUBLIC SQUARE IN
 BRIGHTON TWP FOR BRIGHTON
 TWP TRUSTEES, BEING IN PART OF
 O.L. NOS. 7-8-16-17
 BRIGHTON TWP - LORAIN COUNTY, SAID
 D.E. PATTERSON - COUNTY ENGINEER
 MARCH 20, 1958

P.L. 107+65.10