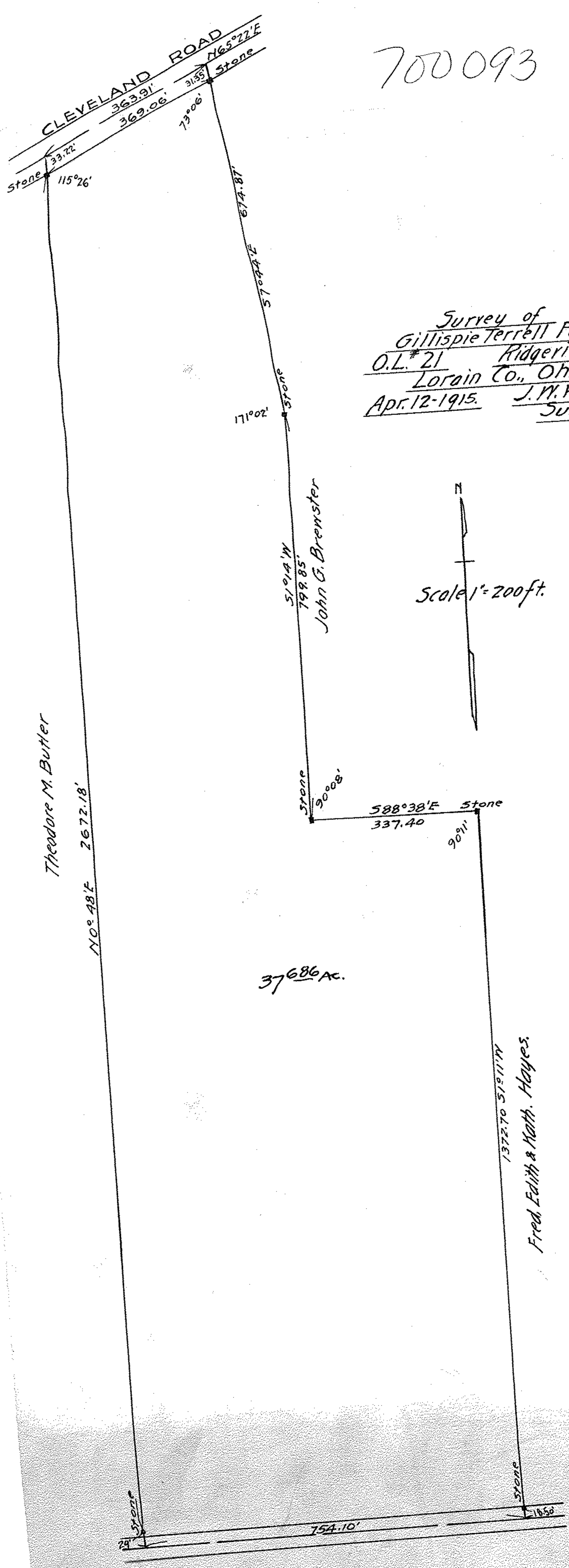


700093



CLEVELAND ROAD
 Stone 33.22' 115°26'
 363.91'
 369.06'
 31.55' N65°22'E
 Stone

674.87'
 57°44'E
 Stone
 171°02'

5191.9' W
 799.85'
 John G. Brenster

Stone 90°08'
 588°38'E
 337.40
 Stone
 90°11'

Theodore M. Butler
 N0°48'E 2672.18'

37686 AC.

1372.70 51°11' W
 Fred, Edith & Math. Hayes.

Stone 754.10'
 Stone 1658'

Scale 1" = 200ft.

Survey of
 Gillispie Terrell Farm
 O.L. # 21 Ridgerille Tp.
 Lorain Co., Ohio.
 Apr. 12-1915. J. W. Warden
 Surveyor.