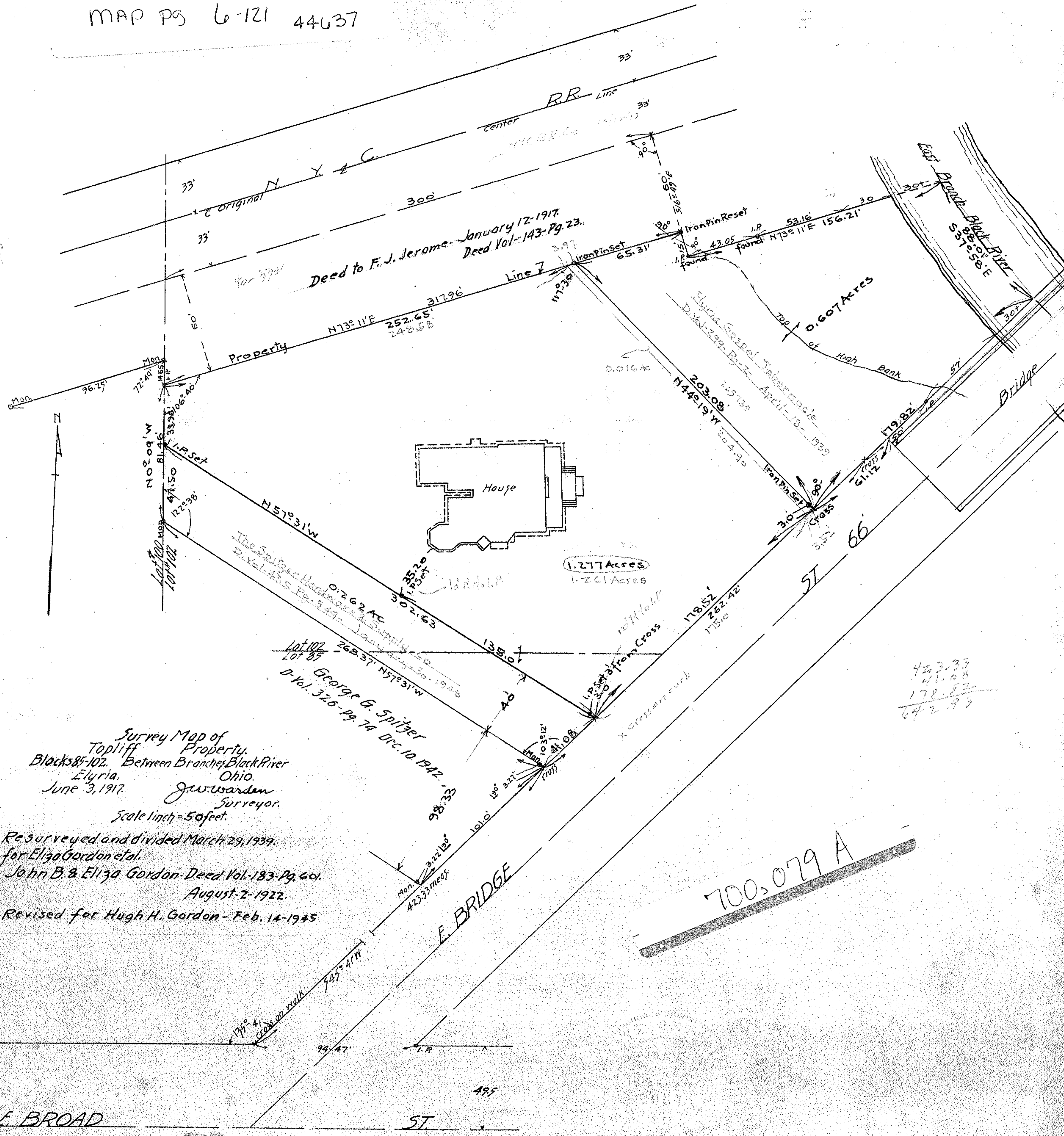


PPN 06-26 085-000-???

MAP PG 6-121 44637



Survey Map of  
 Topliff Property.  
 Blocks 85-102. Between Branches Black River  
 Elyria, Ohio.  
 June 3, 1917. J. W. Warden  
 Surveyor.  
 Scale 1 inch = 50 feet.

Resurveyed and divided March 29, 1939.  
 for Eliza Gordon et al.  
 John B. & Eliza Gordon-Deed Vol. 183-Pg. 601.  
 August-2-1922.  
 Revised for Hugh H. Gordon - Feb. 14-1945

700,079 A

495' E. BROAD ST