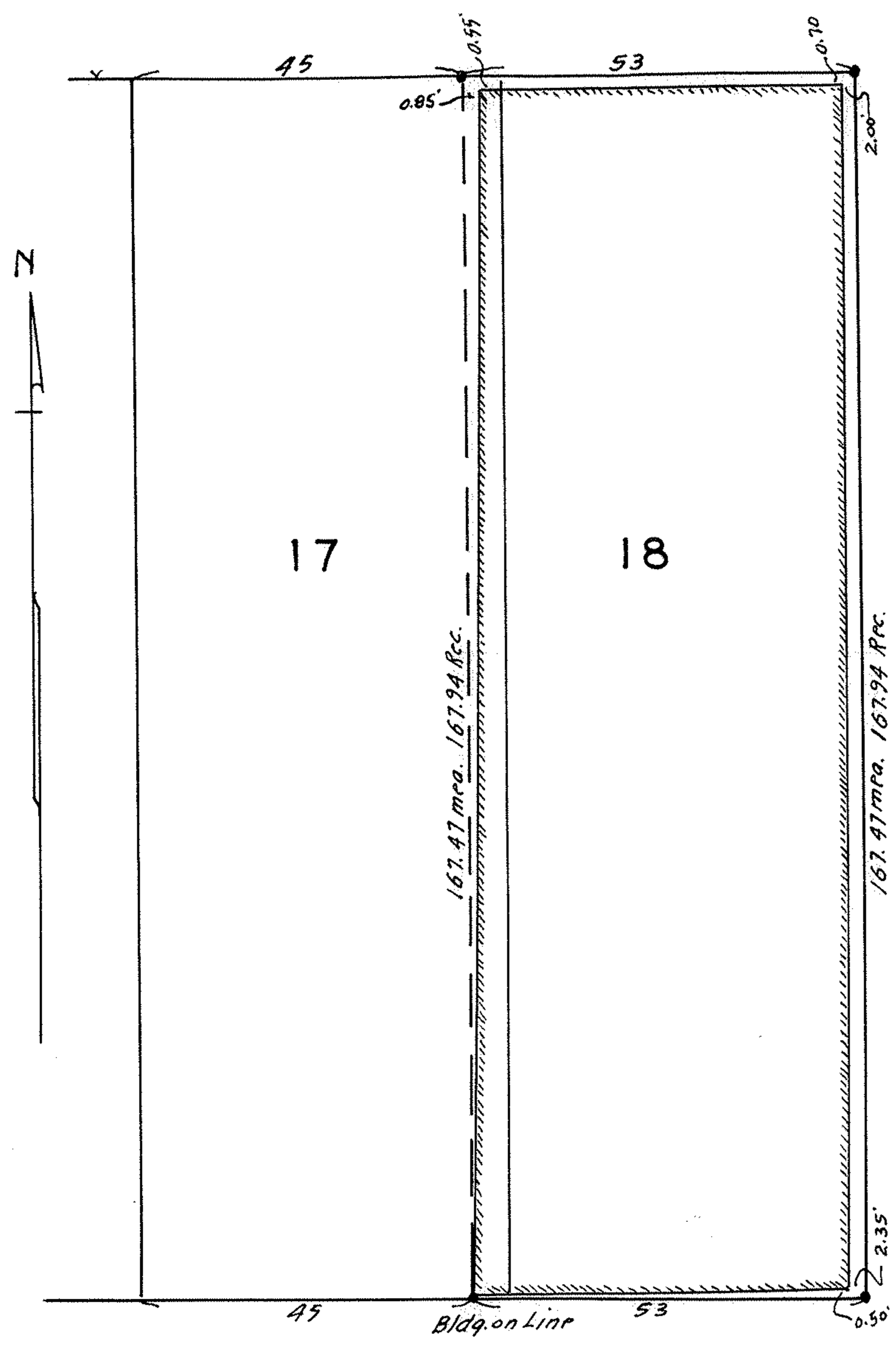


157-1

SECOND ST. 66'

33'

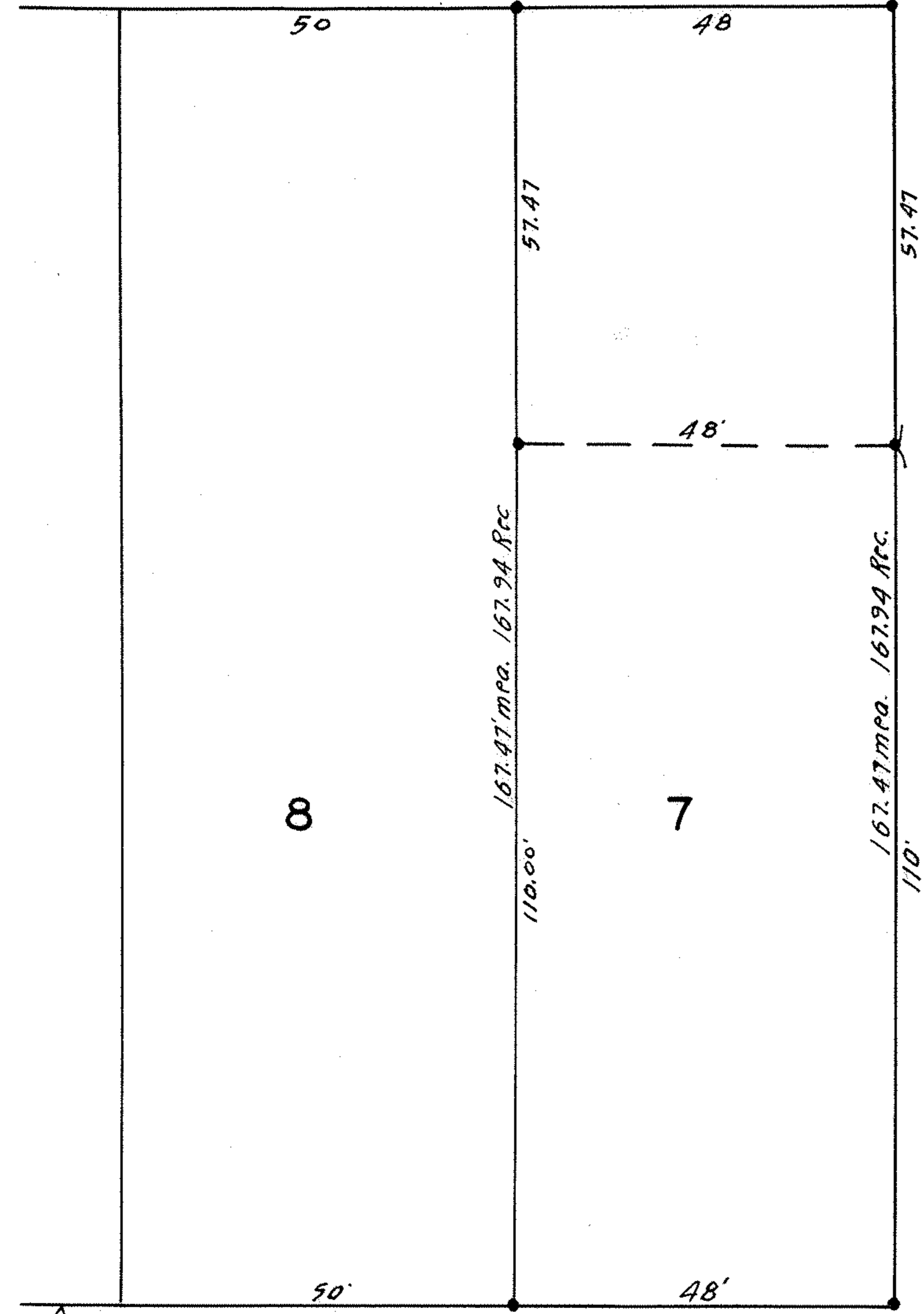


MAP PG. 6-118 44022

PPN 06-24-111,000.777

24'

ALLEY 30'



ALLEY

THIRD ST. 66'

33'

SURVEY FOR
THE ELYRIA COACH CO.
 D-VOL.308 PG. 485 MARCH 7, 1941
 D-VOL.508 PG. 268 DEC. 27, 1950
 BLOCK 58 LOTS 7-17-18 S.B. AND H. DAYS SUBN.
 MAP VOL. 4 PG. 25
 ELYRIA CITY, LORAIN COUNTY, OHIO
 SCALE 1" = 20' NOV. 25, 1955
 J. W. WARDEN AND ASSOCIATES
 REG. SURVEYORS