

1881-65

SURVEY FOR  
CHAS. AND LEONA AUSTIN  
D-VOL. 799 PG. 511 - JUNE 27, 1961  
PART OF O.L. 14 RIDGEVILLE TWP.  
N. RIDGEVILLE CITY LORAIN CO. OHIO  
SCALE 1" = 60" APRIL 2, 1962  
J.W. WARDEN AND ASSOCIATES REG. SURVEYORS  
IRON PINS FOUND OR SET INDICATED THUS ●

HAROLD AND LORNA SWEET  
D-VOL. 733 PG. 389 NOV. 17, 1958  
S 62° 36' W  
675.70

G 1.183 AC.

629.86  
S 60° 15' 45" W  
F 0.972 AC.

588.15  
S 59° 18' W  
E 0.900 AC.

542.58  
S 58° 11' 30" W  
D 0.825 AC.

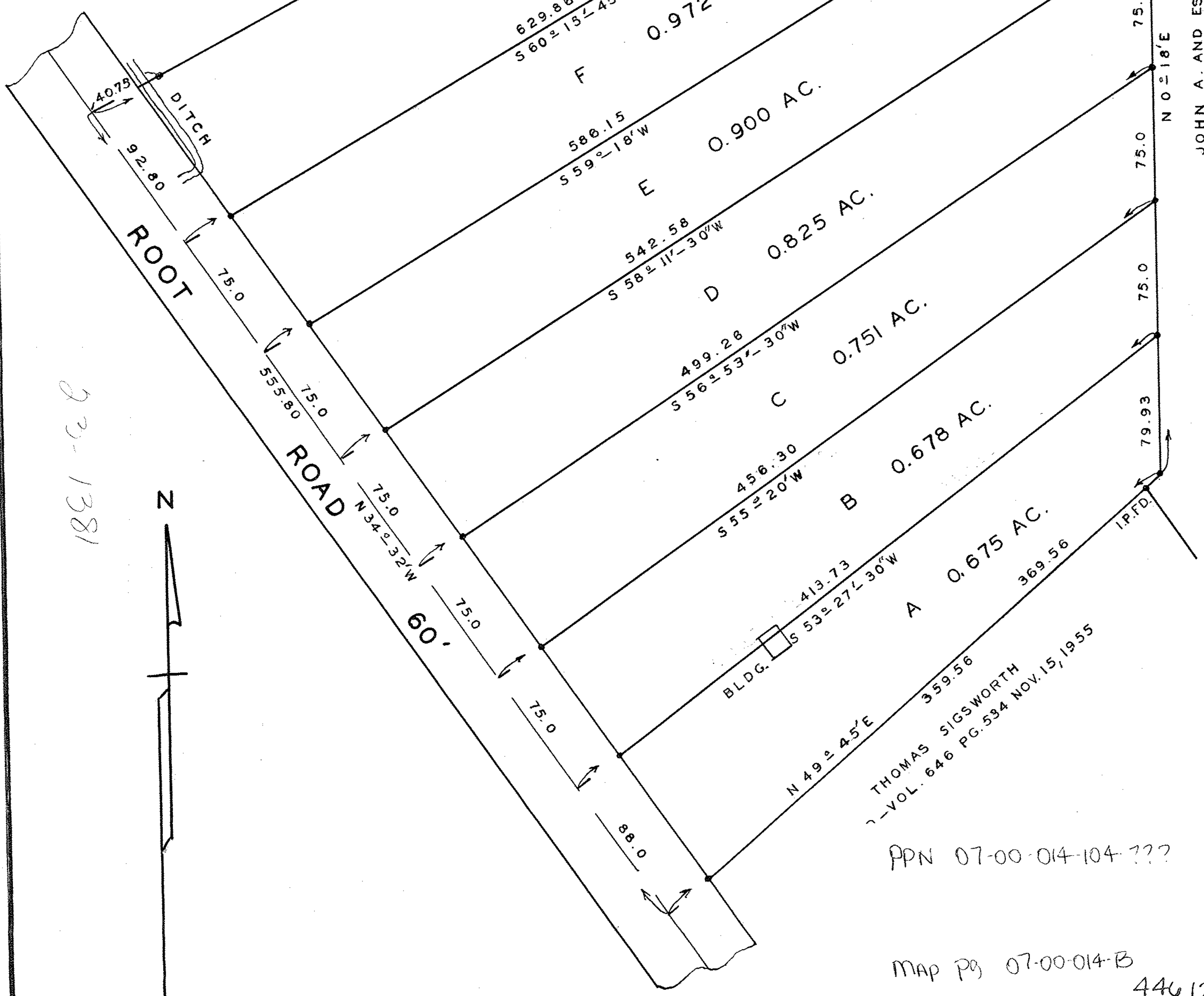
499.28  
S 56° 53' 30" W  
C 0.751 AC.

456.30  
S 55° 20' W  
B 0.678 AC.

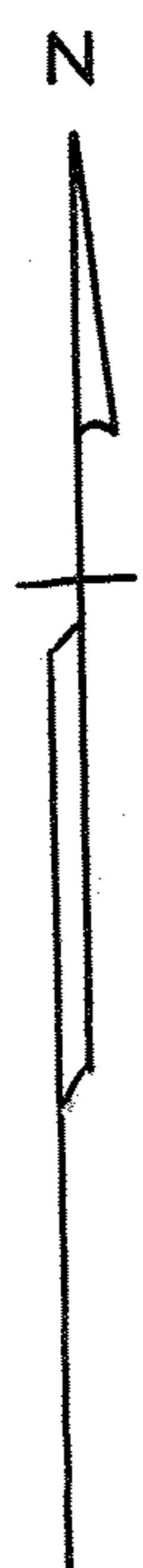
413.73  
S 53° 27' 30" W  
A 0.675 AC.

369.56  
N 49° 45' E  
THOMAS SIGSWORTH  
D-VOL. 646 PG. 534 NOV. 15, 1955

JOHN A. AND ESTHER R. WORCESTER  
D-VOL. 301 PG. 61 - 62 AUG. 29, 1939



1881-1381



PPN 07-00-014-104-???

MAP PG 07-00-014-B

44612