

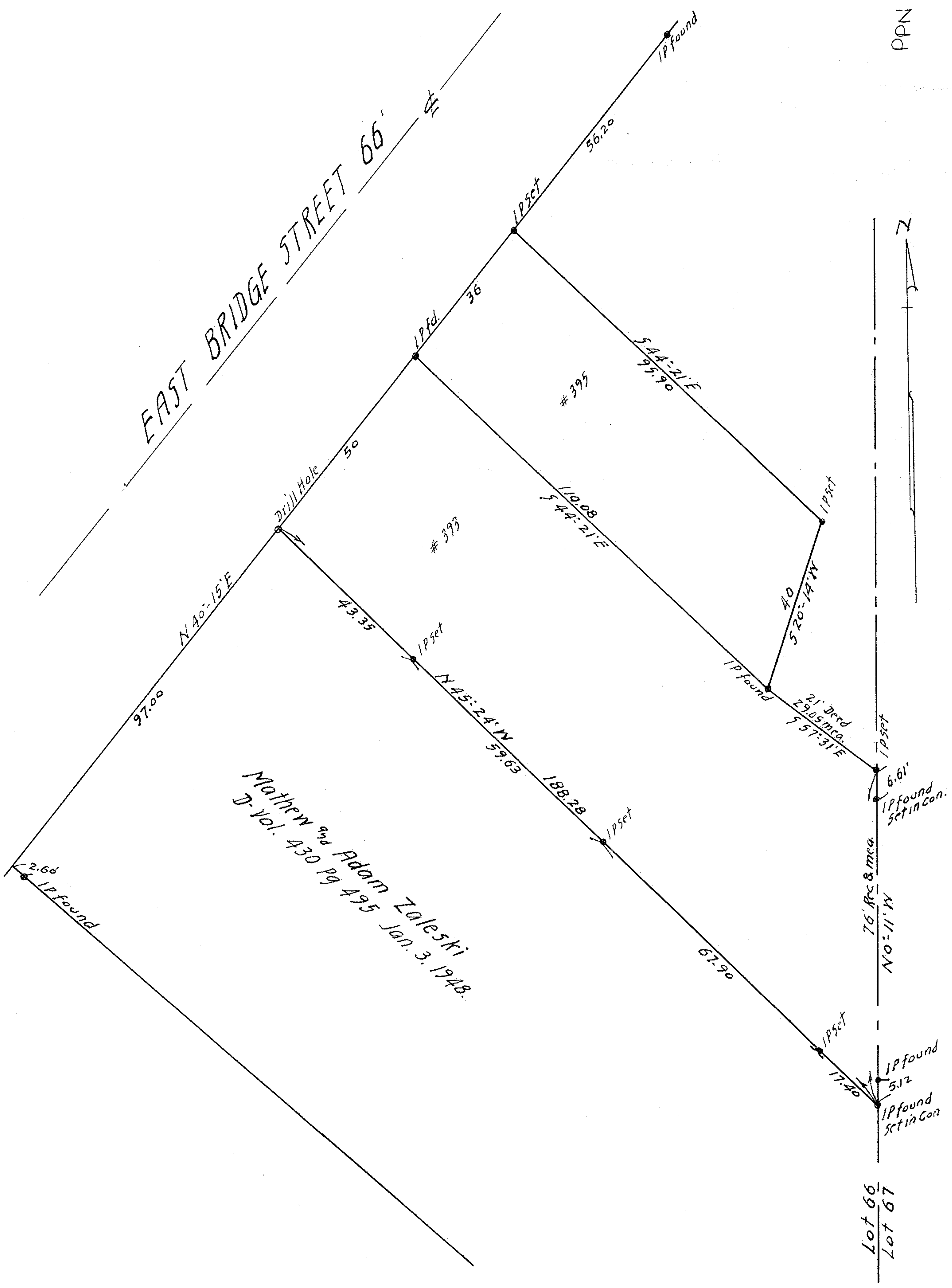
91-1901

Survey for
 LOUIS Mrd TREVA MENNELL
 D-Vol 567 Pg 307 April 11 1953
 D-Vol 569 Pg 501 April 16, 1953
 Part of Lot 66 East of East Branch of Black River
 Elyria Twp. Elyria City Lorain County Ohio.
 Scale 1" = 20' July 1, 1957.
 J. W. Wardenrd Associates Reg. Surveyor's.

PPN 06-25-066-000-???

44573

MAP PG 6103



21-1287