

PPN 06-26-095 000-???

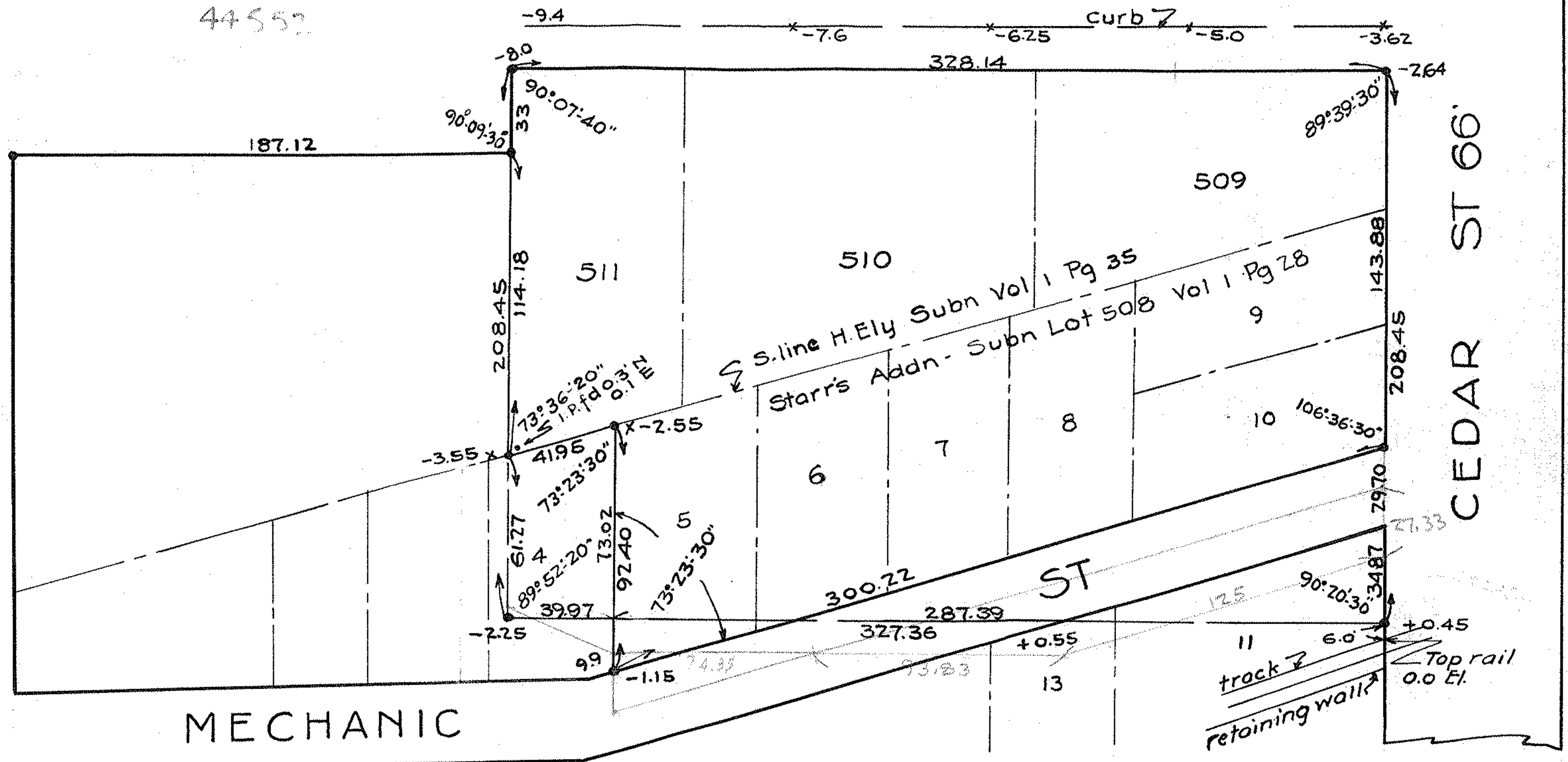
map pg 6-102

44552

EAST AVENUE 66'

PINE

ST 66'



22-0572-4

Survey for The Colson Co.
 Parts of Heman Ely Subn Vol, 1, Pg, 35.
 & Starr's Addn Vol 1, Pg 28, Lorain Co.
 Record of Plats Bk 95, Elyria City
 Lorain Co. Ohio. July 1, 1927 Scale 1"=50'
 Warden & Laundon Civil Engineers