

MAP OF SURVEY MADE FOR
THE MIDLAND BANK.

Lots 262-263-264 Spring Valley Subn. N^o 3.,
Map Vol-12-Pg 27.

Elyria Twp., Lorain Co., Ohio.
Original Twp., Lot 166 East of Black River.

Lorain County, Ohio

Distances are given in feet and decimal parts

Scale, 1 in. = 60' Feet

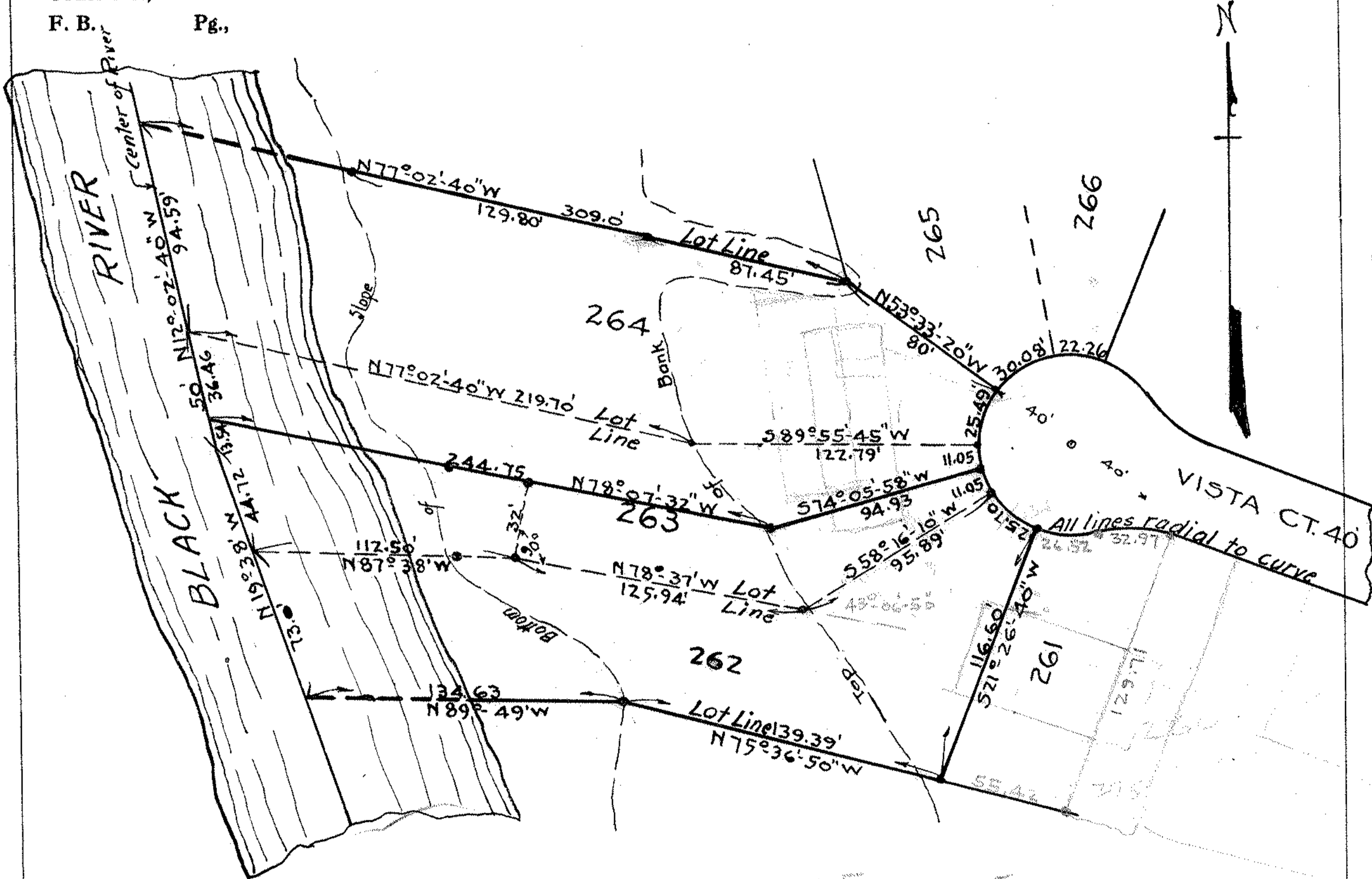
Elyria, O., 9-15-31

Order No.,

F. B., Pg.,

Warden & Laundon, C. E.

403 ELYRIA BLOCK



78-07-32
78-13-58
78-13-20

137
125
257
137

PPN 06-25-1166-000-???

2750
5092
60
137.92
8
57.92
27
30.42

2570
26.52
32.97
27.50
113.69

MAP PG 6-50

44500