

GRISWOLD RD 60'

x 913

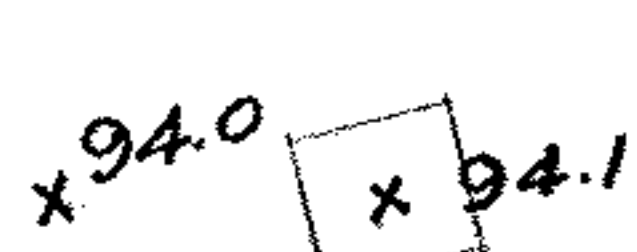
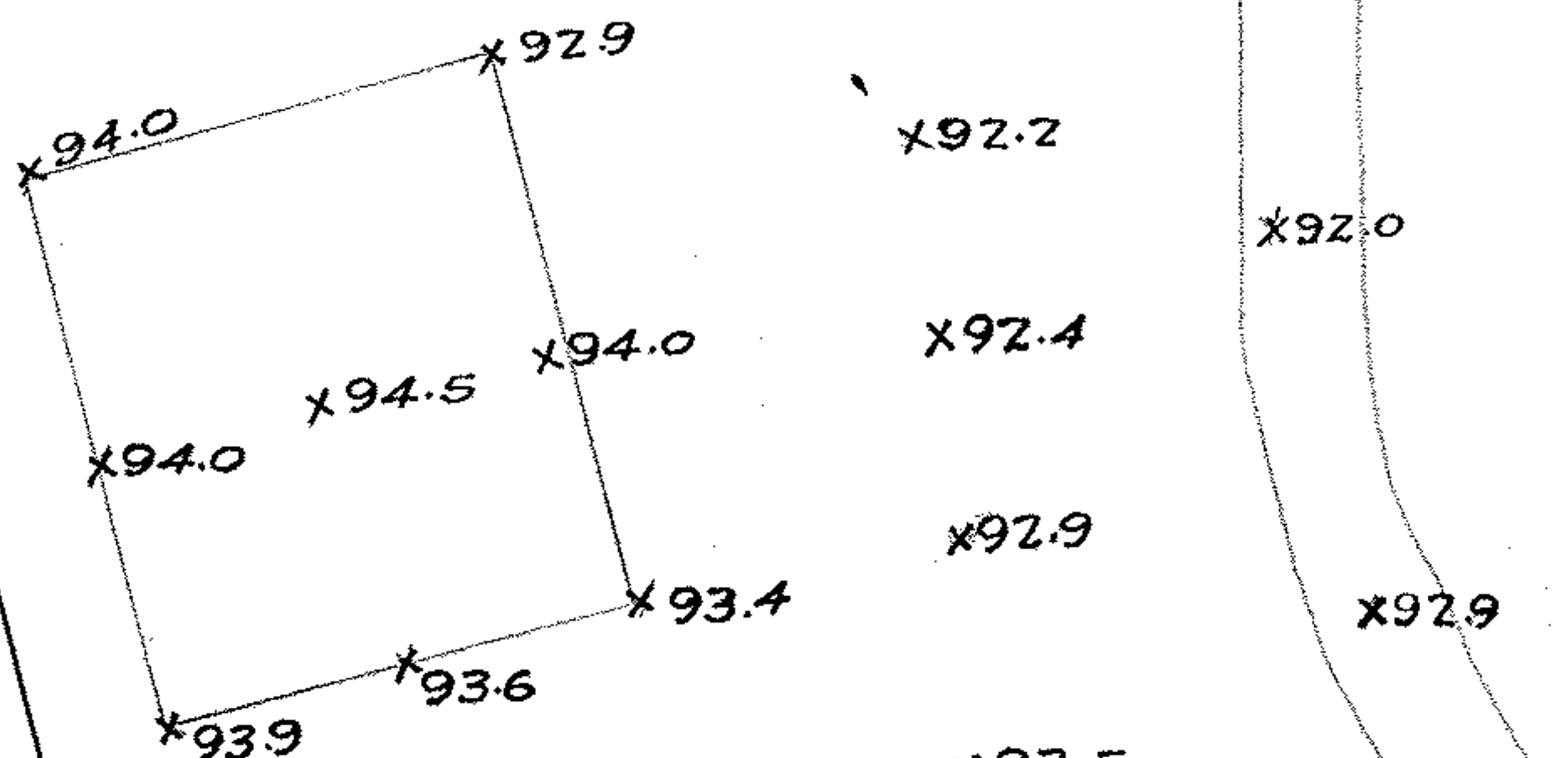
* 889 bottom ditch N 89° 43' 30" E 533.60

N. line of O.L. 38

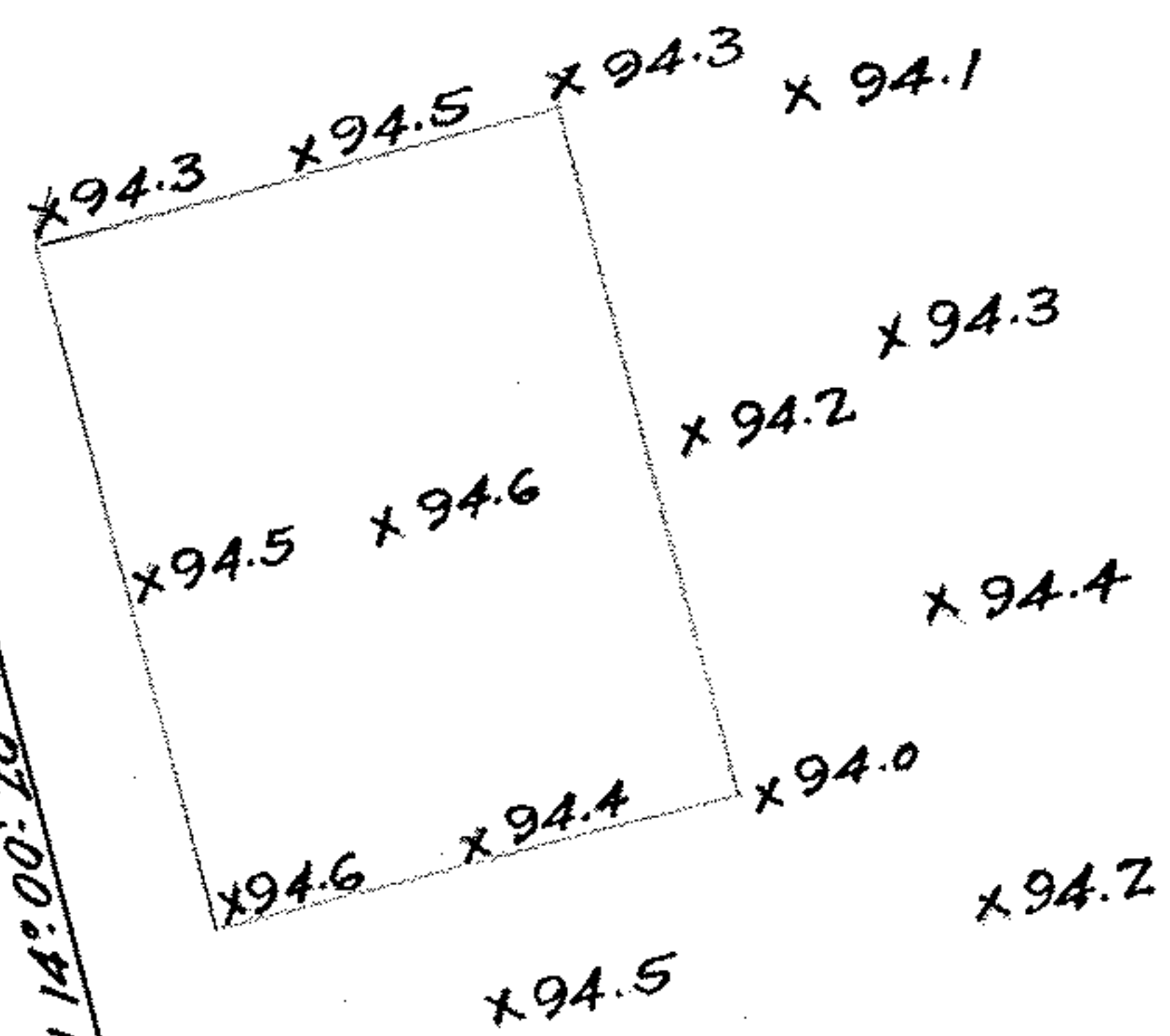
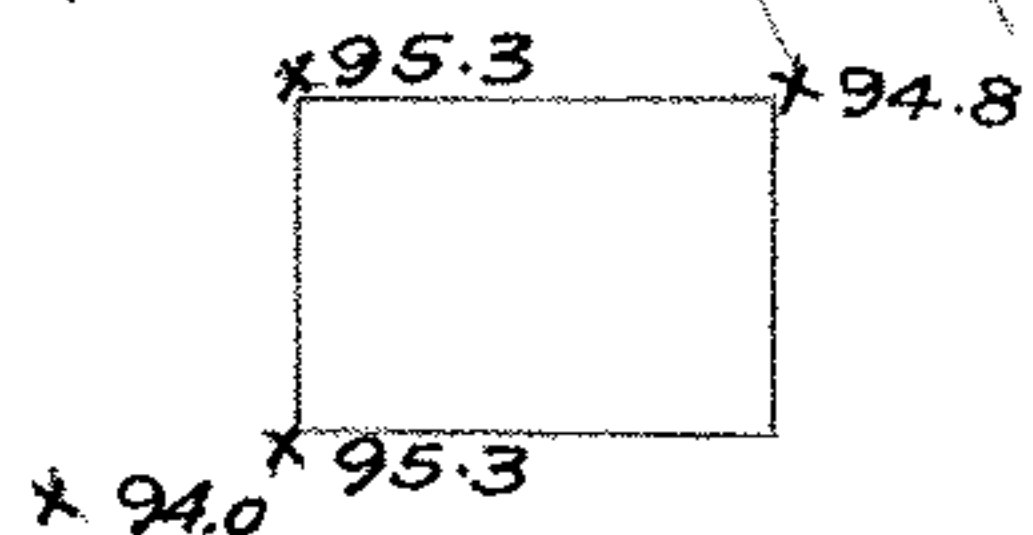
I.P. x 93.60

Top of E. rail at S. line of Rd.
E. assumed 100.0

R.R. Co. 66'



x 93.90



N 14° 00' 20" W 466.12

B & O

x 100.11

I.P. set 0.60' W. of I.P. fd.

S 89° 50' W 425.32

Leona Heights Allt. Vol 6-35 & 36

S 0° 35' 30" E 454.19
Elizabeth Nell

I.P. fd.

Map pg 6. 42
PPN 06-24-038. 101.???

Survey for The Cities Service Oil Co
Original Lot 38 W. of River. Elyria Twp. Lorain Co. Ohio.
Scale 1" = 40' Nov. 3, 1926 Warden & Laundon. Engineers.
4.994 acres to S. line of Rd.