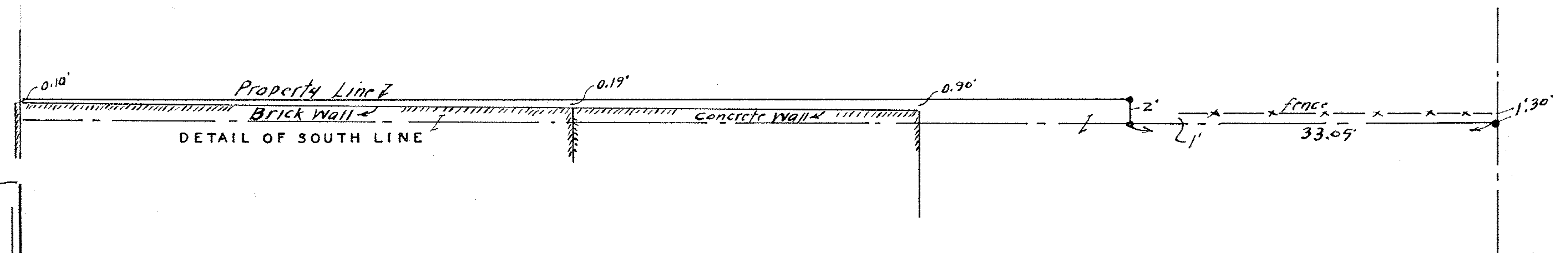


100755^c
1

SURVEY FOR
INGWER REALTY INC.
BLOCK 54 LOTS 269-271
ORIGINAL VILL. PLAT-MAP VOL. 3 PG. 14
ELYRIA CITY, LORAIN COUNTY, OHIO
SCALE 1" = 20' NOV. 6, 1956
J. W. WARDEN AND ASSOCIATES REG. SURVEYORS

D. D. Andrus.
BY - D. D. ANDRUS



MIDDLE AVENUE 66'

TEMPLE COURT 33'

THIRD STREET 66'

