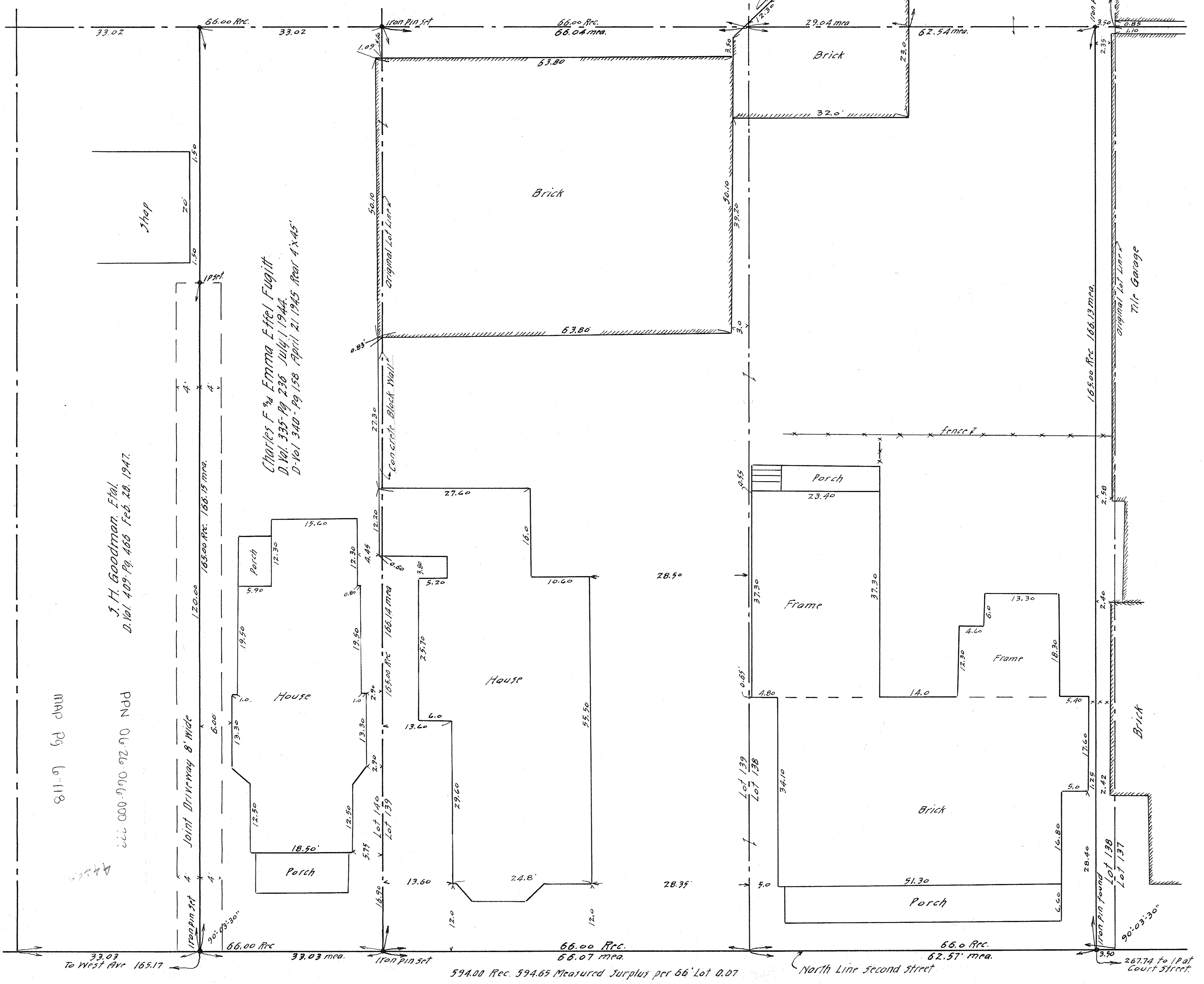


16-1041

16-1041

Survey for
 N.D. BACKUS and
 CHARLES F. and EMMA E. FUGITT
 Block 64 Lots 5-138-139-140
 Original Village Plat Map Vol. 3-Pg. 14
 Elyria City Lorain County Ohio
 Scale 1" = 10' November 11, 1947.
 J. W. Warden, Registered Surveyor.



J. H. Goodman, Etal.
 D. Vol. 409-Pg. 466 Feb. 28, 1947.

Charles F. and Emma Etel Fugitt
 D. Vol. 335-Pg. 236 July 1, 1944.
 D. Vol. 340-Pg. 158 April 21, 1945 Rear 4x45'

MAP PG 6-118

666 000 070 02 00 PND

Joint Driveway & Walk

SECOND STREET 66'

FB - Fauver 23-138
 " - Warden 5-16
 " " 17-4

594.00 Rec. 594.65 Measured Surplus per 66' Lot 0.07

66.0 Rec. 62.57 mea.
 North Line Second Street
 267.74 to Plat Court Street.