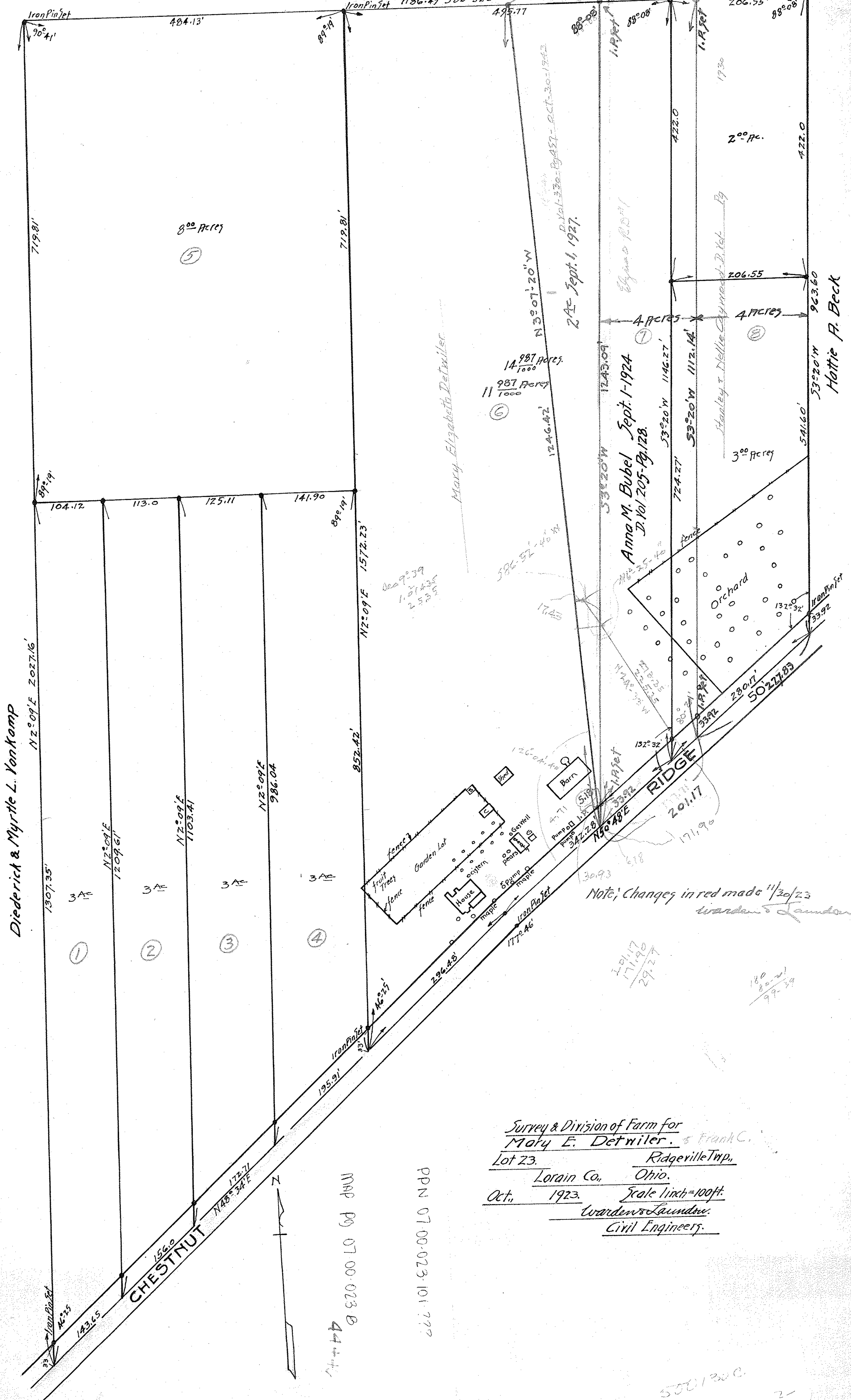


Hattie A. Beck



Survey & Division of Farm for  
 Mary E. Detwiler, & Frank C.  
 Lot 23, Ridgerville Twp.,  
 Lorain Co., Ohio.  
 Oct., 1923. Scale 1 inch = 100 ft.  
 Warden & Laundre,  
 Civil Engineers.

PPN 07-00-023-101-777

MAP PG 07-00-023 B 4444

550130C