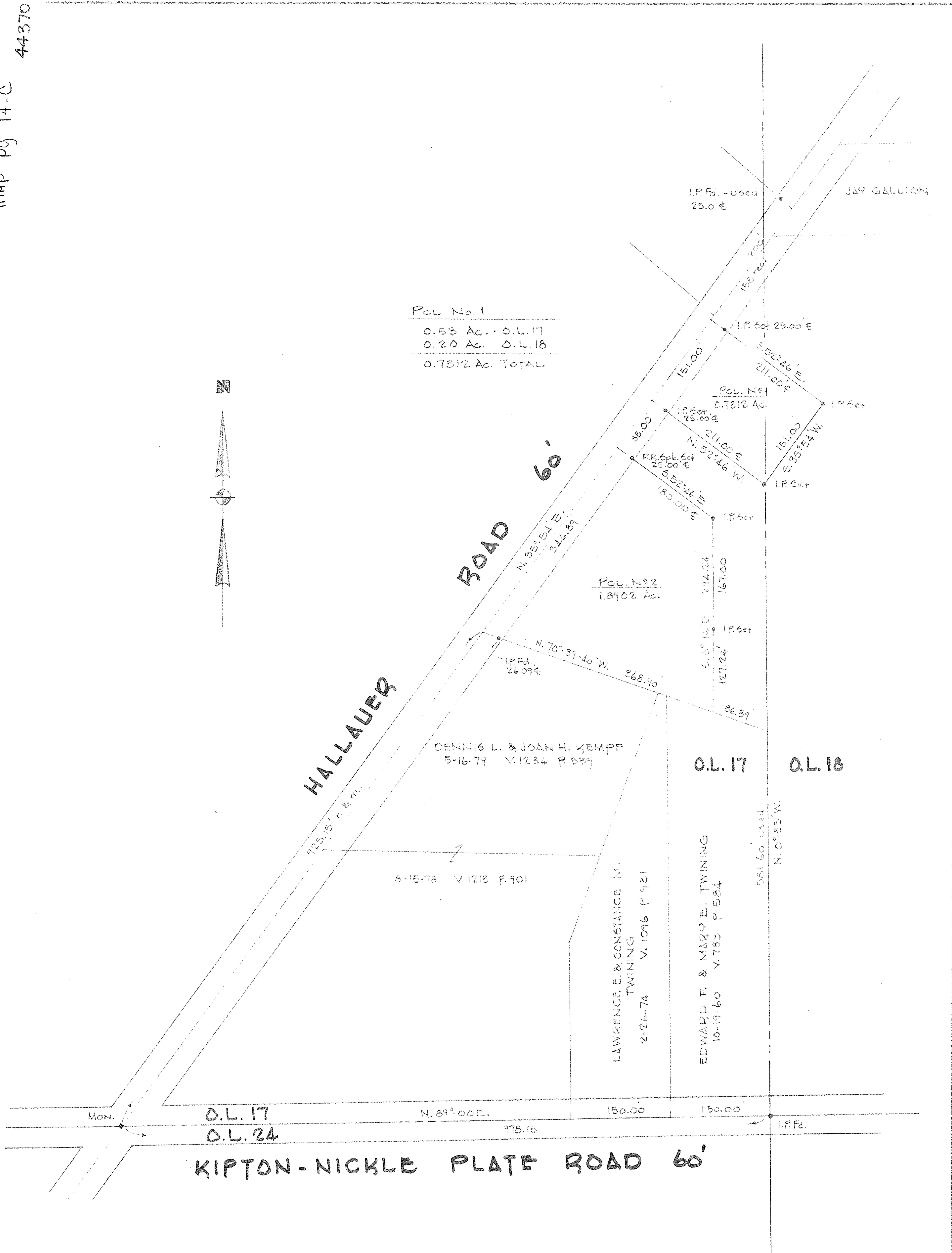




P.C.L. No. 1
 0.53 Ac. - O.L. 17
 0.20 Ac. - O.L. 18
 0.7312 Ac. TOTAL

P.C.L. No. 2
 1.8902 Ac.



SURVEY FOR

MRS. GENENA E. SMITH

PART OF O.L.s 17 & 18

PITTSFIELD TWP.

LORAIN COUNTY

OHIO

SCALE 1"=100'

DEC. 17, 1981

LAUNTON • SIMON • CAHL & ASSOC. ENGINEERS-SURVEYORS