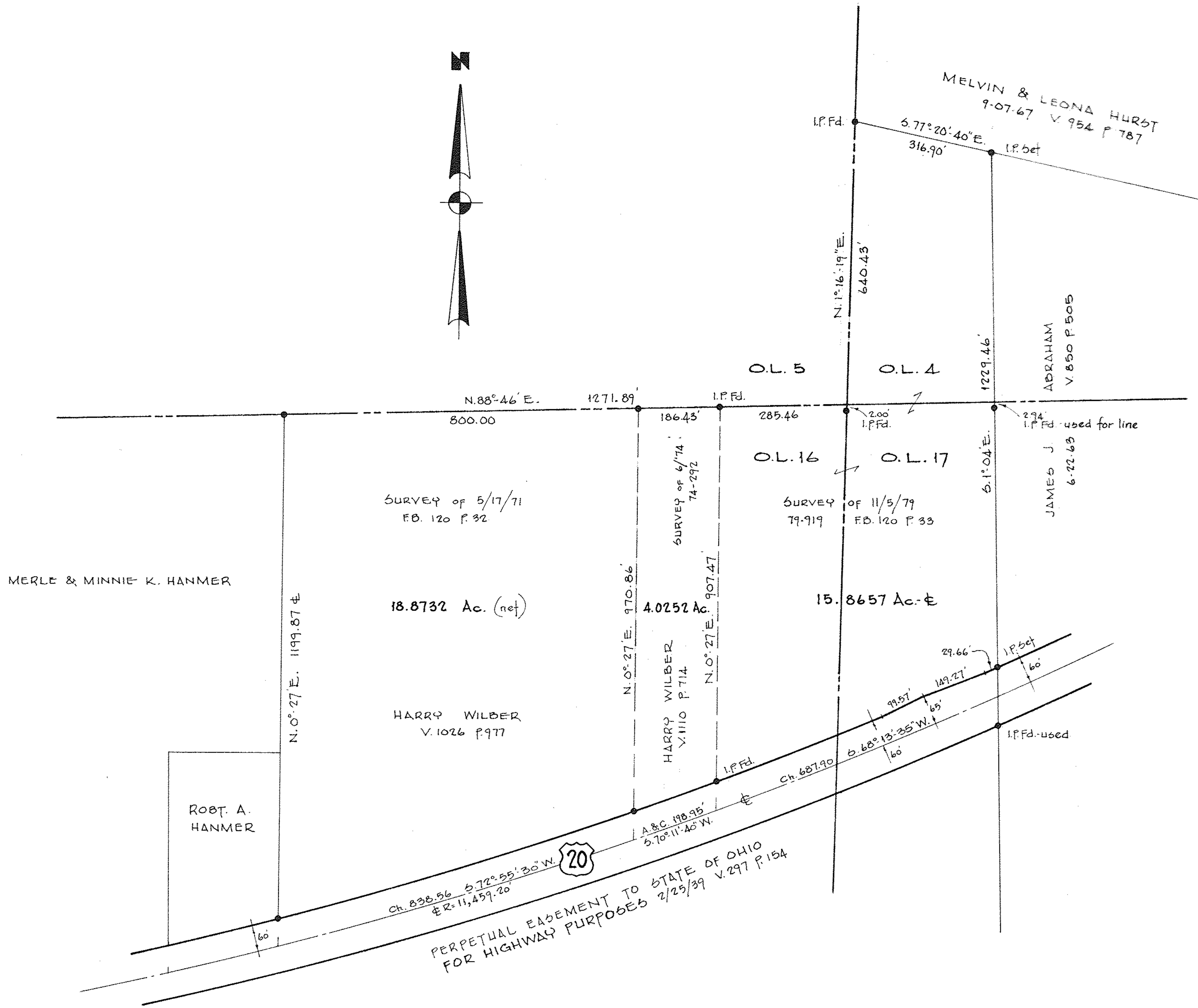
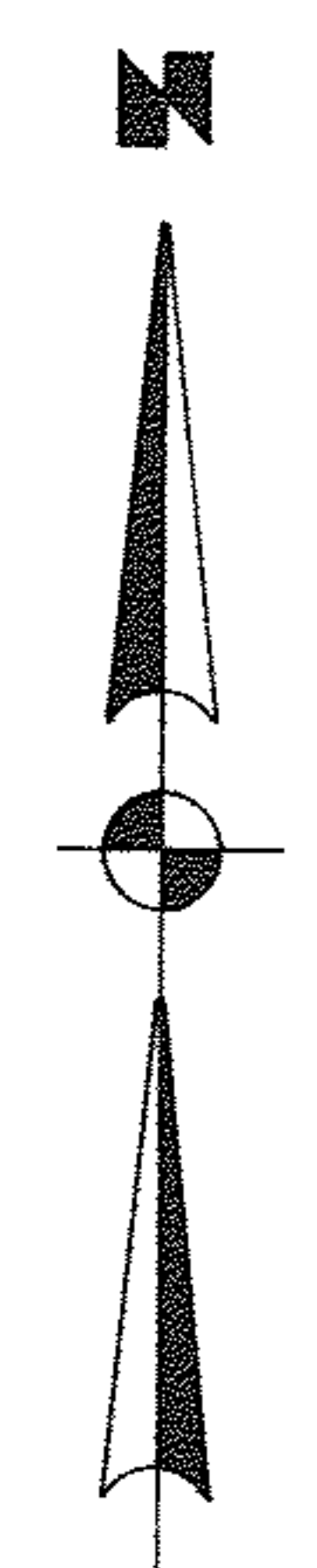


PPN 14-00-004-000-002
14-00-016-000-013, 20, 0
14-00-017-000-024

MAP Pg 14-C 4426



O.L. 4	4.41 Ac.
O.L. 16	5.53 Ac.
O.L. 17	5.93 Ac.

SURVEY FOR

HARRY WILBER

PART OF O.L.'s 4, 16 & 17
LORAIN COUNTY
SCALE 1"=200'
LAUNDON • SIMON • CAHL & ASSOC. ENGINEERS & SURVEYORS

PITTSFIELD TWP.
OHIO
NOV. 5, 1979