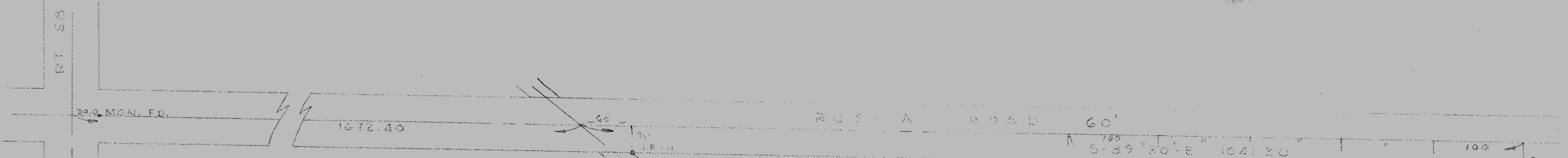


PPN 09-00-026 000 002
004
005
010
024
025
027
028
033

44320

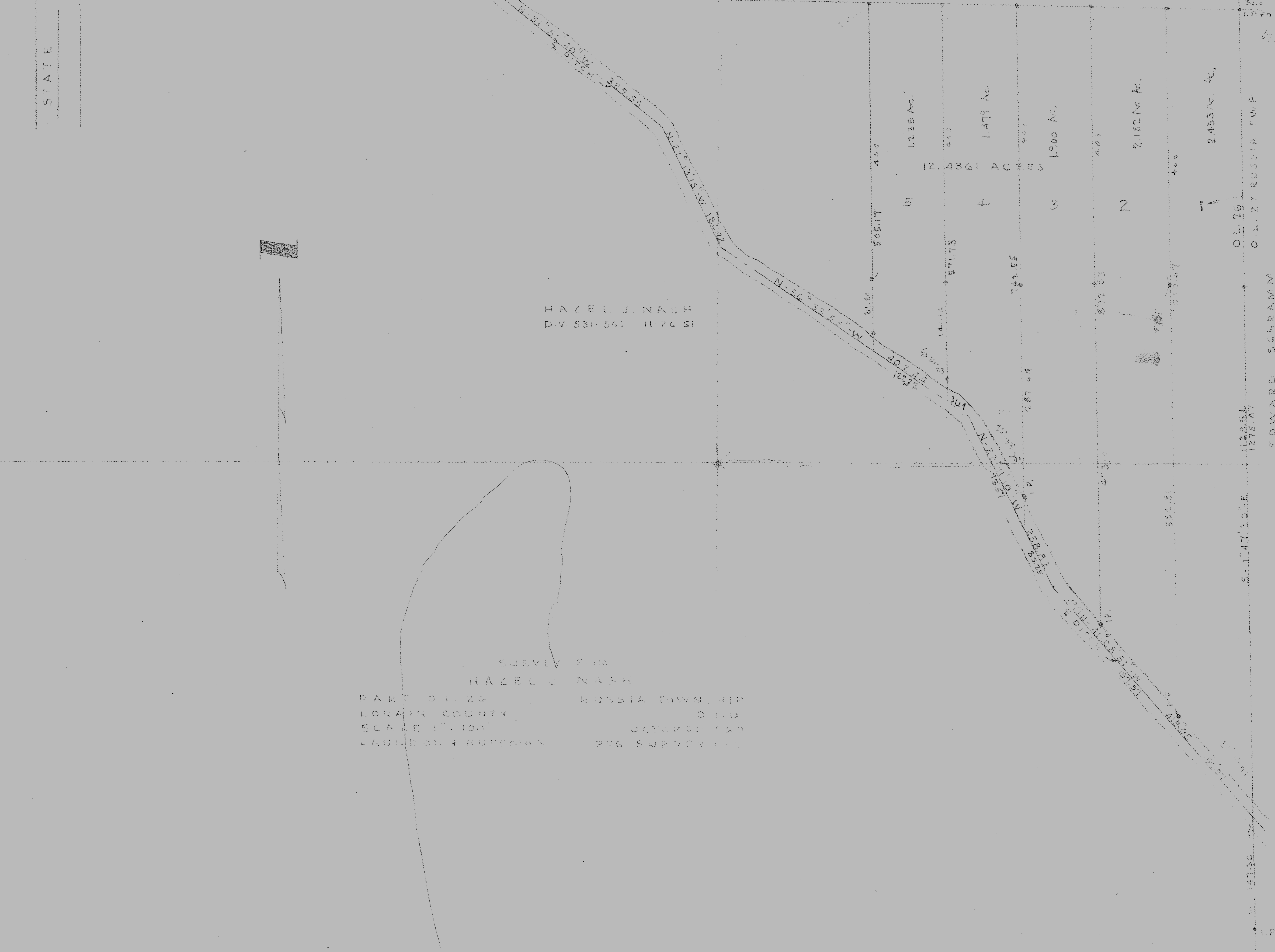
MAP PG 9-C

Lots numbered to correspond with descriptions.



HAZEL J. NASH
D.V. 531-561 11-26 51

SURVEY FOR
HAZEL J. NASH
PART OF L. 26 RUSSIA TOWN, 11P
LORAIN COUNTY, OHIO
SCALE 1"=100' OCTOBER 1960
LAURENCE RUFFMAN REG SURVEYOR



EDWARD SCHEAMM
O.L. 26
O.L. 27 RUSSIA TWP
1275.54
1275.87
S. 1°47'30"E
584.81
4735
1.840