

OBERLIN COLLEGE
8-28-64 D.V. 887 PG. 43

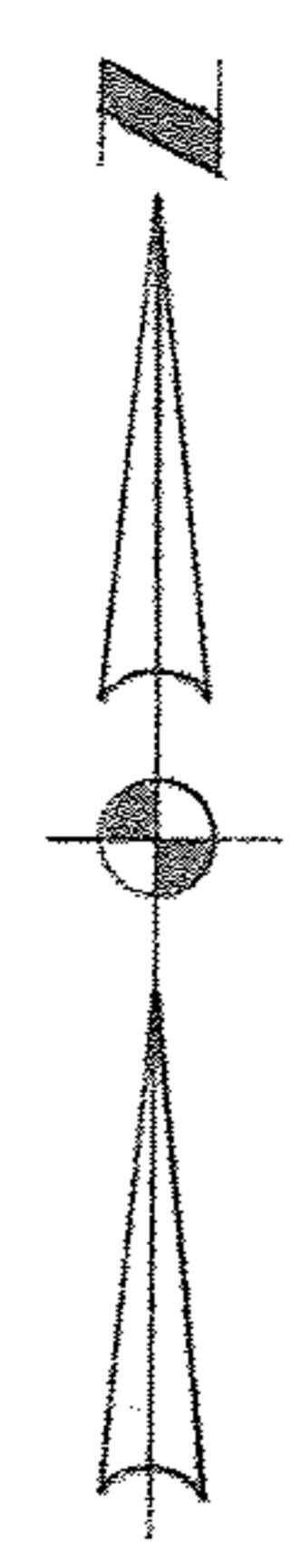
OBERLIN IMPROVEMENT AND
HISTORICAL ORGANIZATION
12-15-72 D.V. 1070 PG. 265

9-00-085-112-068
9-00-085-112-069
9-00-085-112-070
9-00-085-B

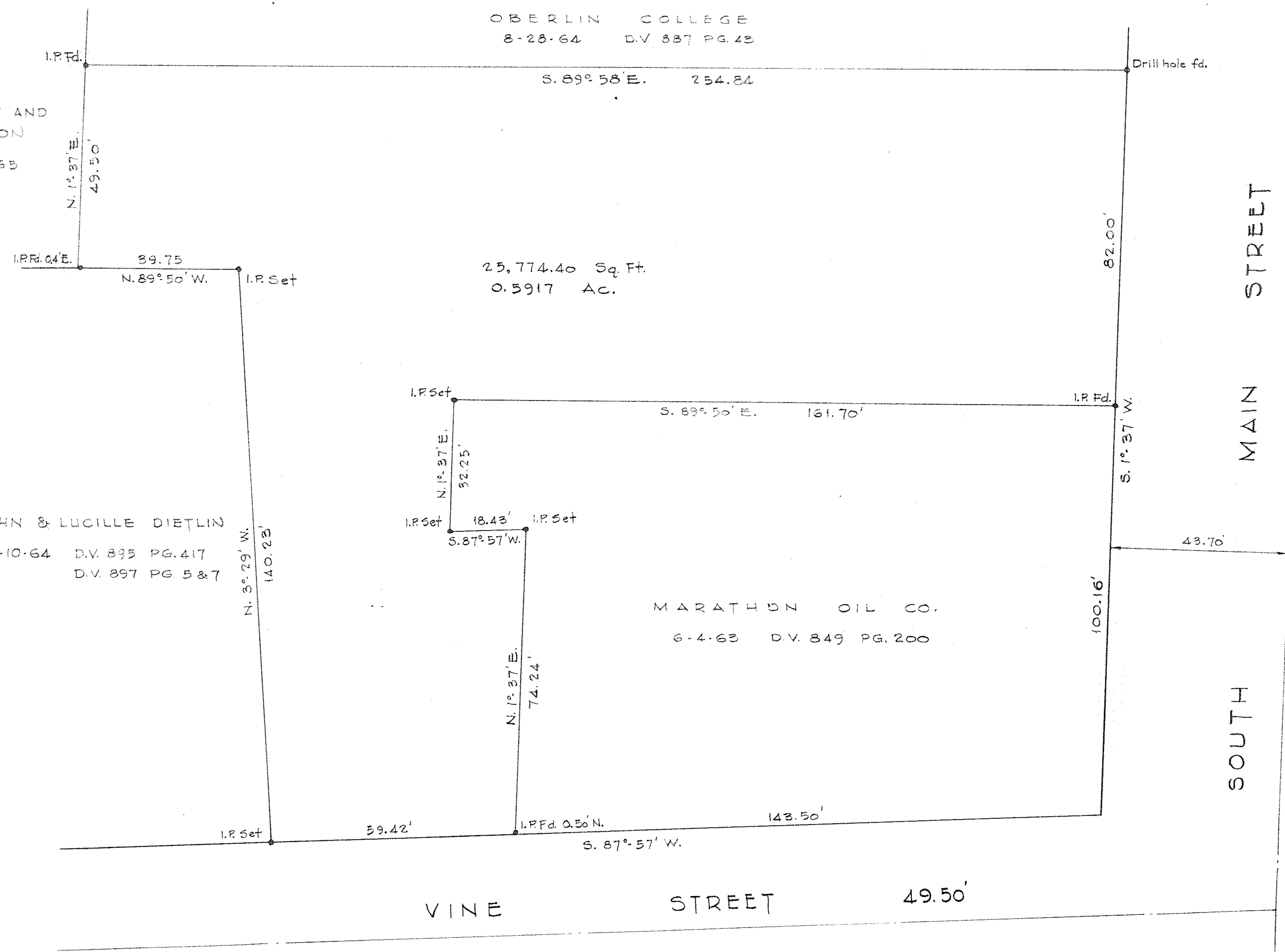
44303

PPN 09-00-085-112-068
069
070

MAP PG 9-00-085-B



JOHN & LUCILLE DIETLIN
12-10-64 D.V. 895 PG. 417
D.V. 897 PG. 5 & 7



SURVEY FOR KENNETH DALTON
K D LANES BOWLING ALLEY

PART OF LOT 69 ALL OF LOT 70 O.V.P. PV. 5-30 PV. 1-17
CITY OF OBERLIN LORAIN COUNTY OHIO
SCALE 1"=20' MAY 16, 1974
LAUNDON-SIMON-CAHL & ASSOC.
ENGINEERS - SURVEYORS
FB. 192 PG. 1

Job 74-276