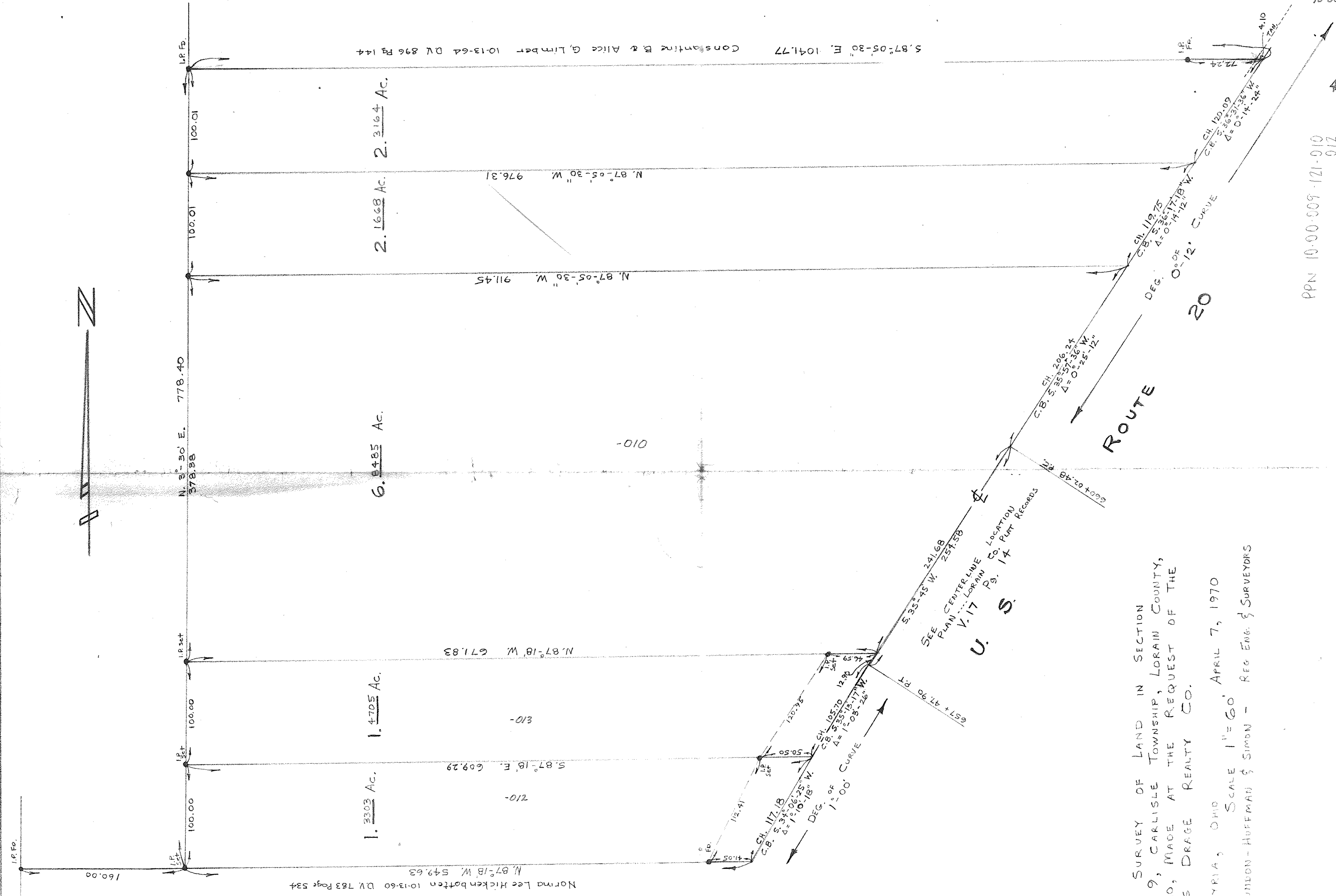


10-00-009-121-010  
 10-00-009-121-012  
 10-00-009-121-013  
 10-00-009-F

44274

PPN 10-00-009-121-010  
 012  
 013

MAP PG 10-00-009-F



Norma Lee Hickenbottom 10-13-60 DV 783 Page 534  
 N. 87° 18' W. 549.63

1. 3303 Ac.  
 1. 4705 Ac.

S. 87° 18' E. 609.29

N. 87° 18' W. 671.83

N. 87° 30' E. 778.40  
 378.38

6. 8485 Ac.

N. 87° 05' 30" W. 911.45

2. 1668 Ac.  
 2. 3164 Ac.

N. 87° 05' 30" W. 976.31

S. 87° 05' 30" E. 1041.77  
 Consantine B & Alice G. Limbert 10-13-64 DV 896 Pg 144

SEE CENTERLINE LOCATION RECORDS  
 V. 17 Pg. 14  
 U. S.

SURVEY OF LAND IN SECTION  
 No. 9, CARLISLE TOWNSHIP, LORAIN COUNTY,  
 OHIO, MADE AT THE REQUEST OF THE  
 LES DRAGE REALTY CO.

ELYRIA, OHIO  
 LAUNDON-HUFFMAN & SIMON - REG. ENG. & SURVEYORS

APRIL 7, 1970

SCALE 1" = 60'

ROUTE 20

20