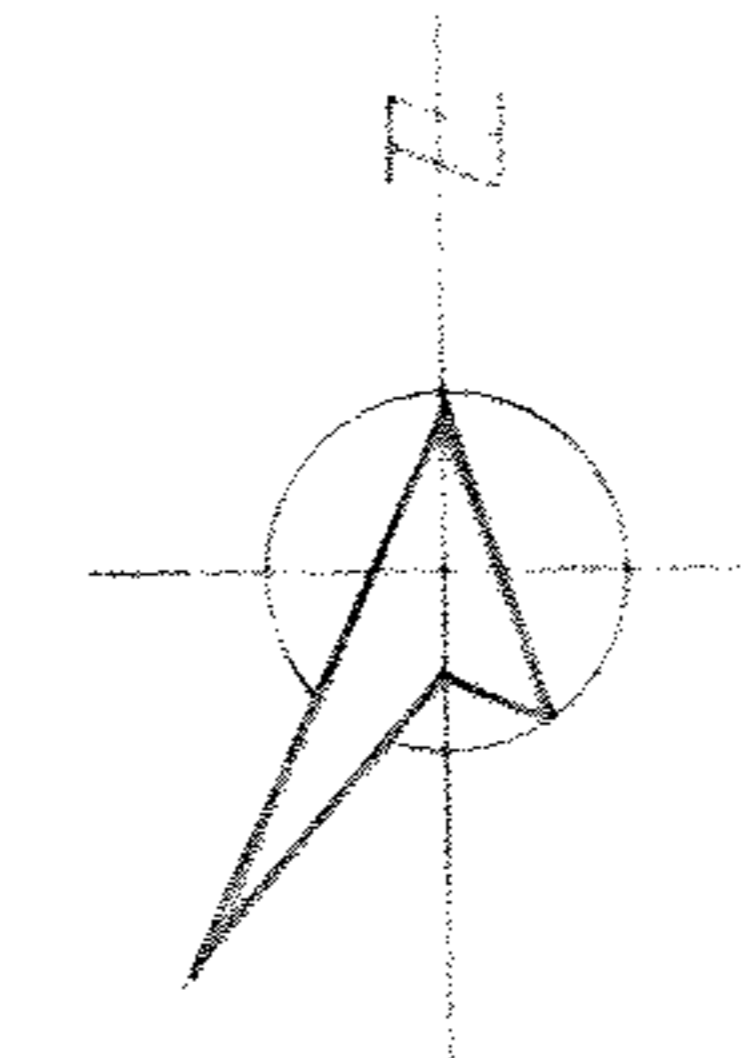
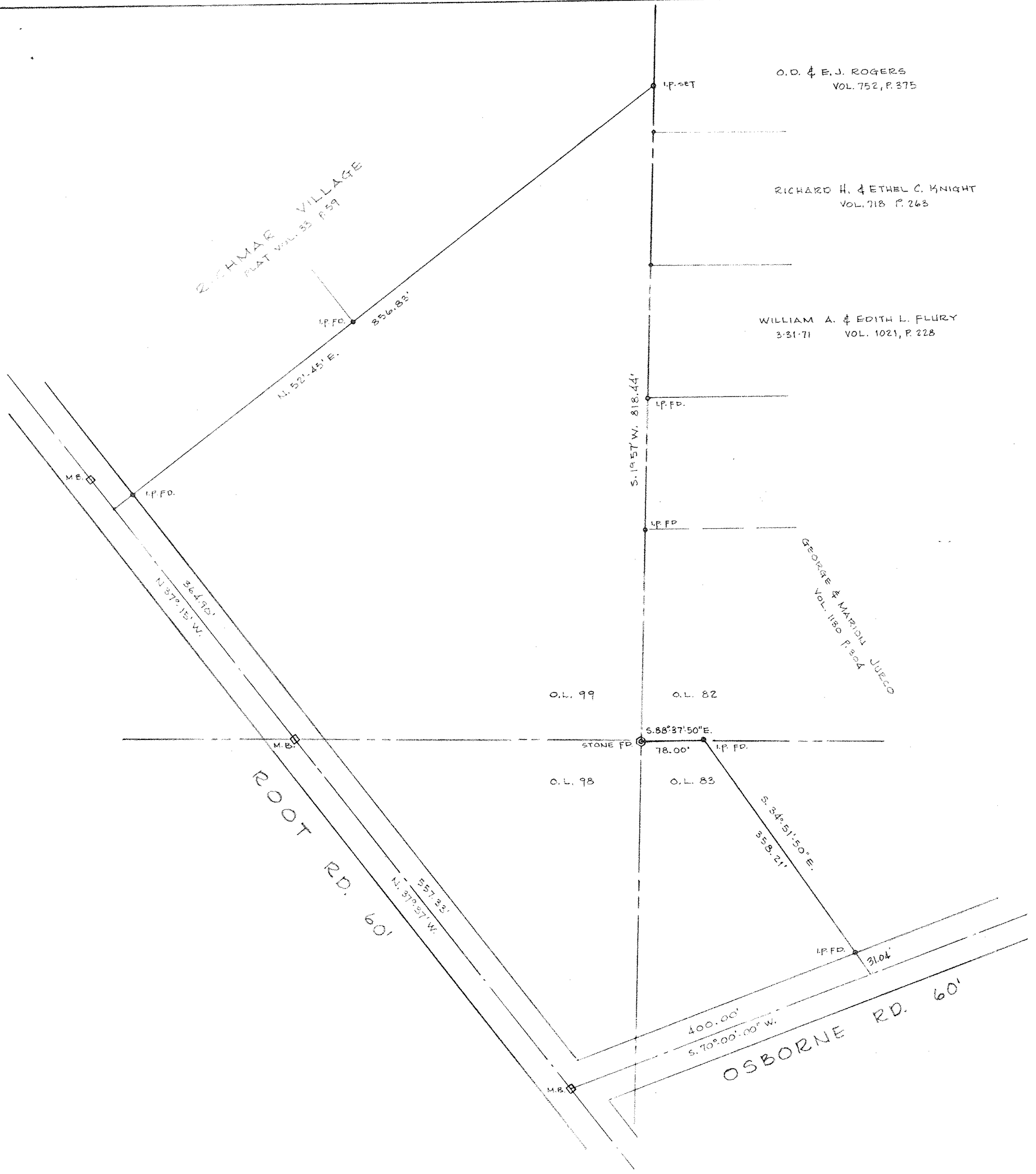


MAP PG 12-A  
12-00-099-B 44214



ACRES		BREAKDOWN	
O.L. 83	12.755	ACRES	
O.L. 98	2.5744	ACRES	
O.L. 99	3.2201	ACRES	
<b>TOTAL</b>	<b>18.550</b>	<b>ACRES</b>	

SURVEY OF REMAINING LANCES OF  
**CATHERINE JURCO**  
 BEING PART OF O.D. & E.J. ROGERS VOL. 752, P. 375  
 IN HENRY COUNTY, OHIO.

MADE BY: CAUDY & COMPANY  
 12-800