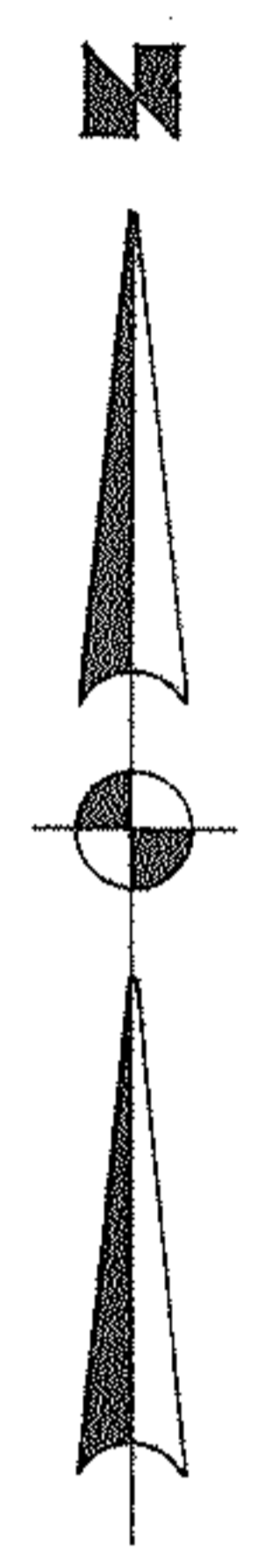


PPN 06-22-009-102.028

06-22-009-102-028
6-13

MAP P5 6-13 44189



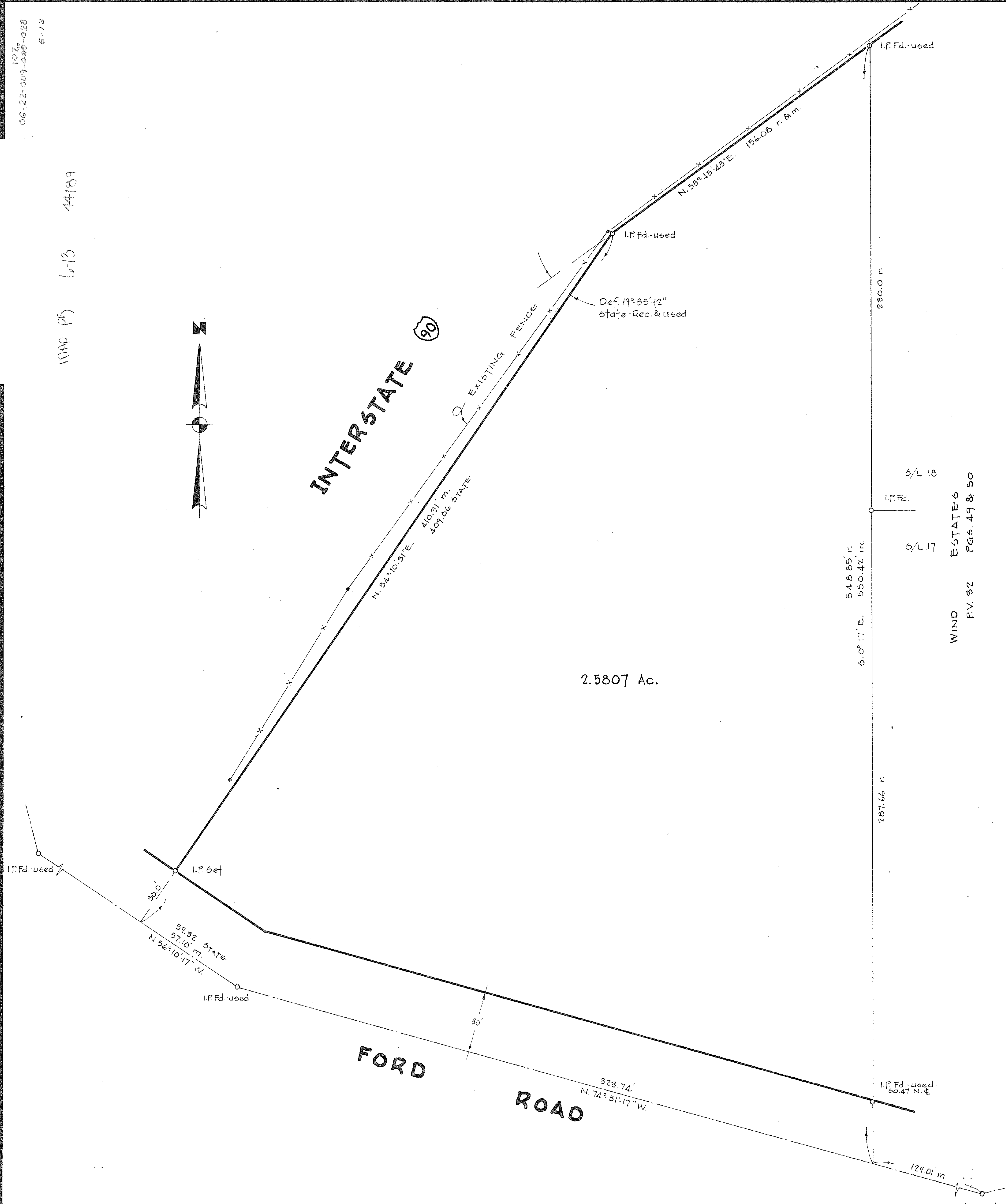
INTERSTATE 90



EXISTING FENCE

2.5807 Ac.

FORD ROAD



WIND ESTATE 6
P.V. 32 PGs. 49 & 50
5/7/17
5/7/18
P.D. 1

SURVEY OF LANDS OF GEORGE S. & ETHEL CHAMBERS
FOR
LE CROSS REALTY
PART OF O.L. 9 OF THE BURRELL & DAY TRACT OF ELYRIA TWP.
CITY OF ELYRIA LORAIN COUNTY OHIO
SCALE 1" = 30' AUGUST, 1979
LAUNDON • SIMON • CAHL & ASSOC.
ENGINEERS SURVEYORS Job No. 79-901 F.B. 140/41