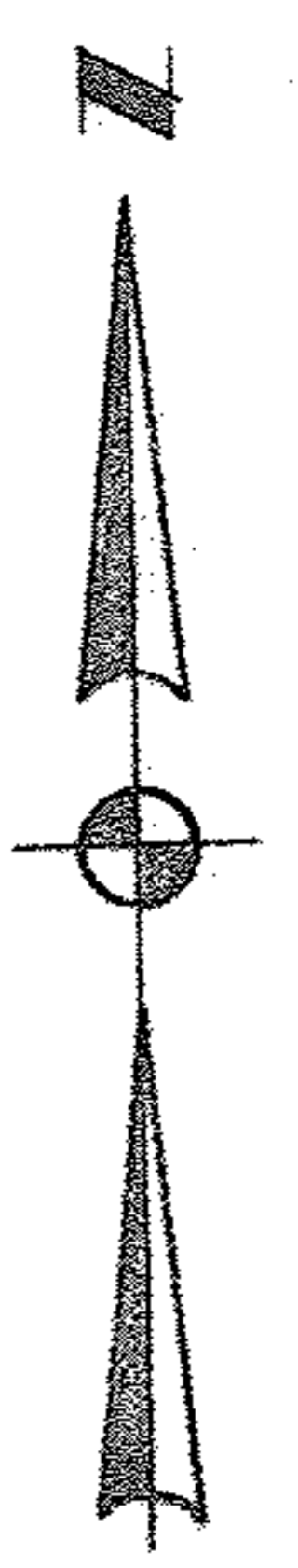
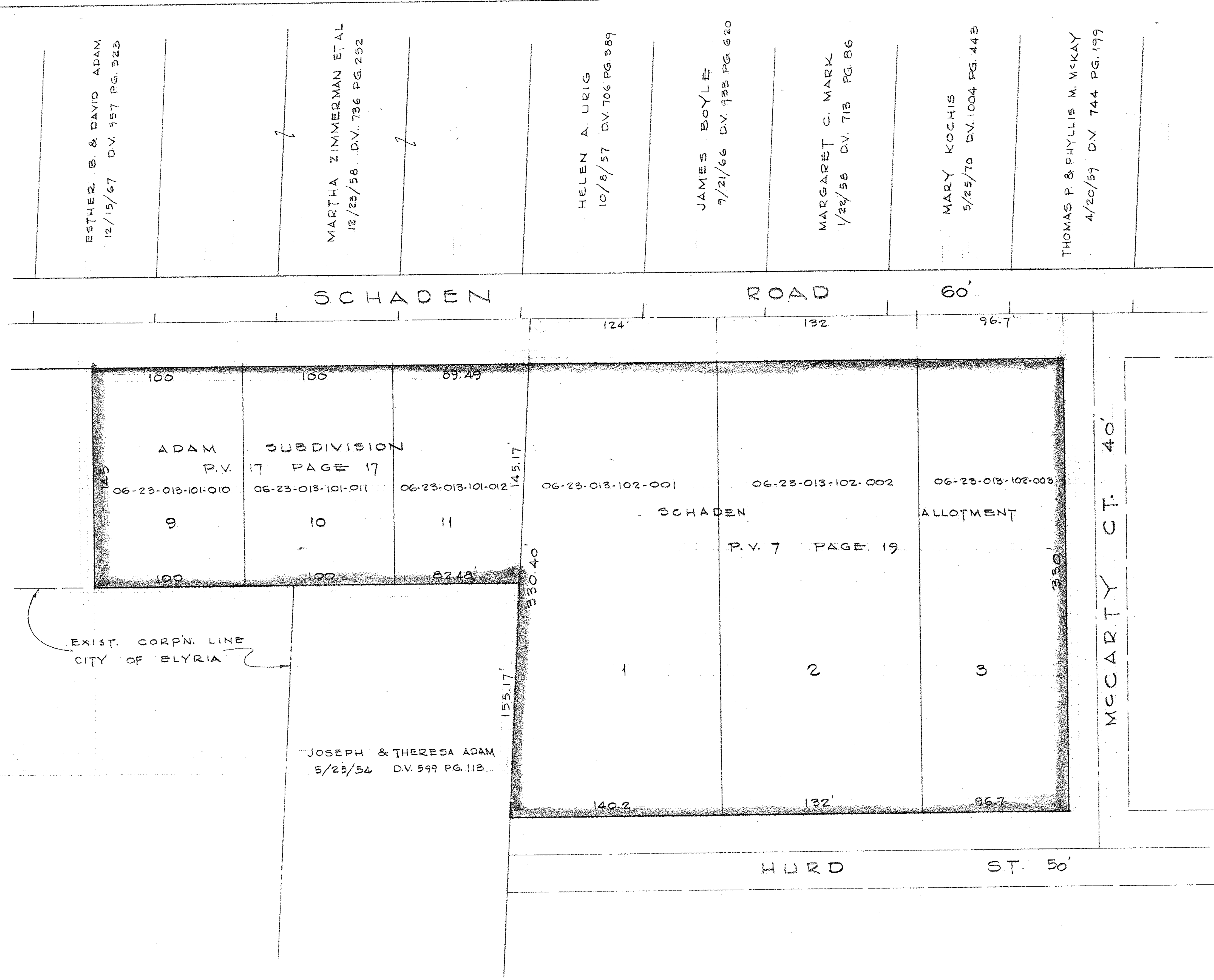


6-23-013-101-010
 6-23-013-101-011
 6-23-013-101-012
 6-23-013-102-001
 6-23-013-102-002
 6-23-013-102-003
 6-27

MAP PG. 6-27

PPN 06-23-013-101-010 HQ-012
 001 HQ-003

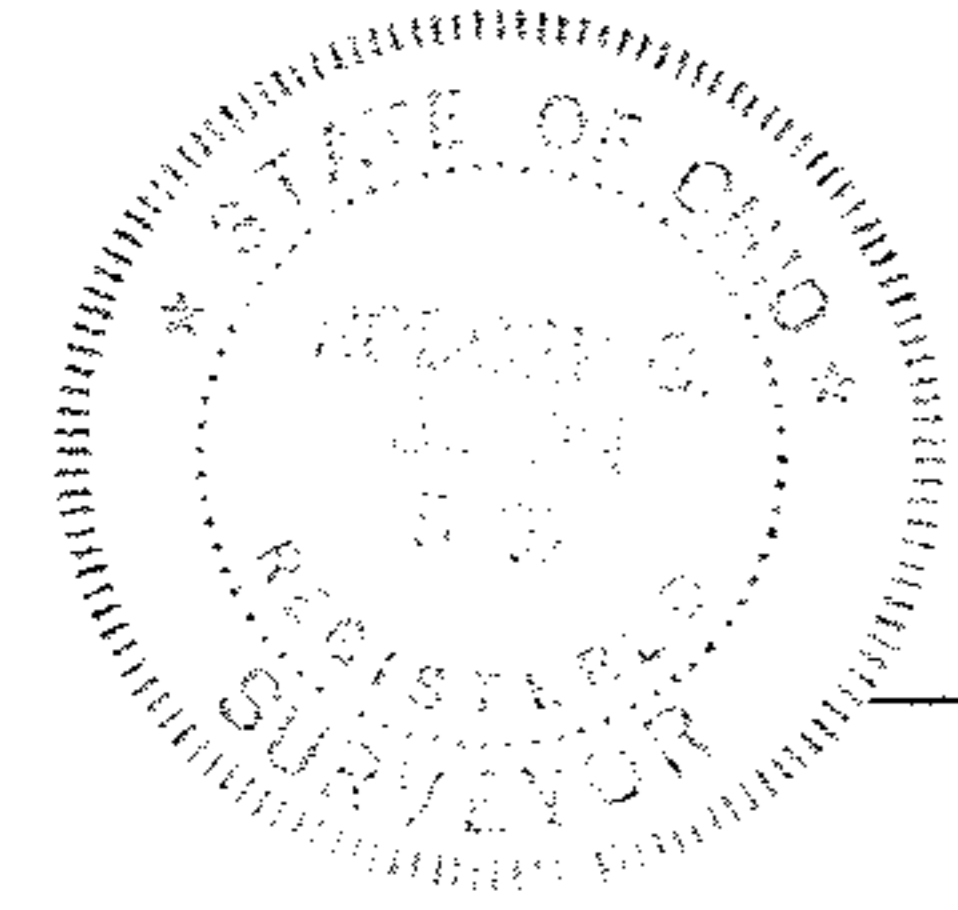
44180



TOTAL ACREAGE TO BE ANNEXED
 3.45 ACRES

LANDS TO BE ANNEXED TO THE CITY OF ELYRIA

S/L's 9, 10 & 11 ADAM SUBDIVISION P.V. 17 PG. 17
 S/L's 1, 2 & 3 ANTON SCHADENZ'S INTERURBAN ALLOT P.V. 5 PG. 29
 O.L. 13 BRACE TRACT ELYRIA TOWNSHIP
 LORAIN COUNTY OHIO
 SCALE 1"=50' NOVEMBER, 1974
 LAUNDON • SIMON • CAHL & ASSOC.
 ENGINEERS SURVEYORS



Rodger Simon