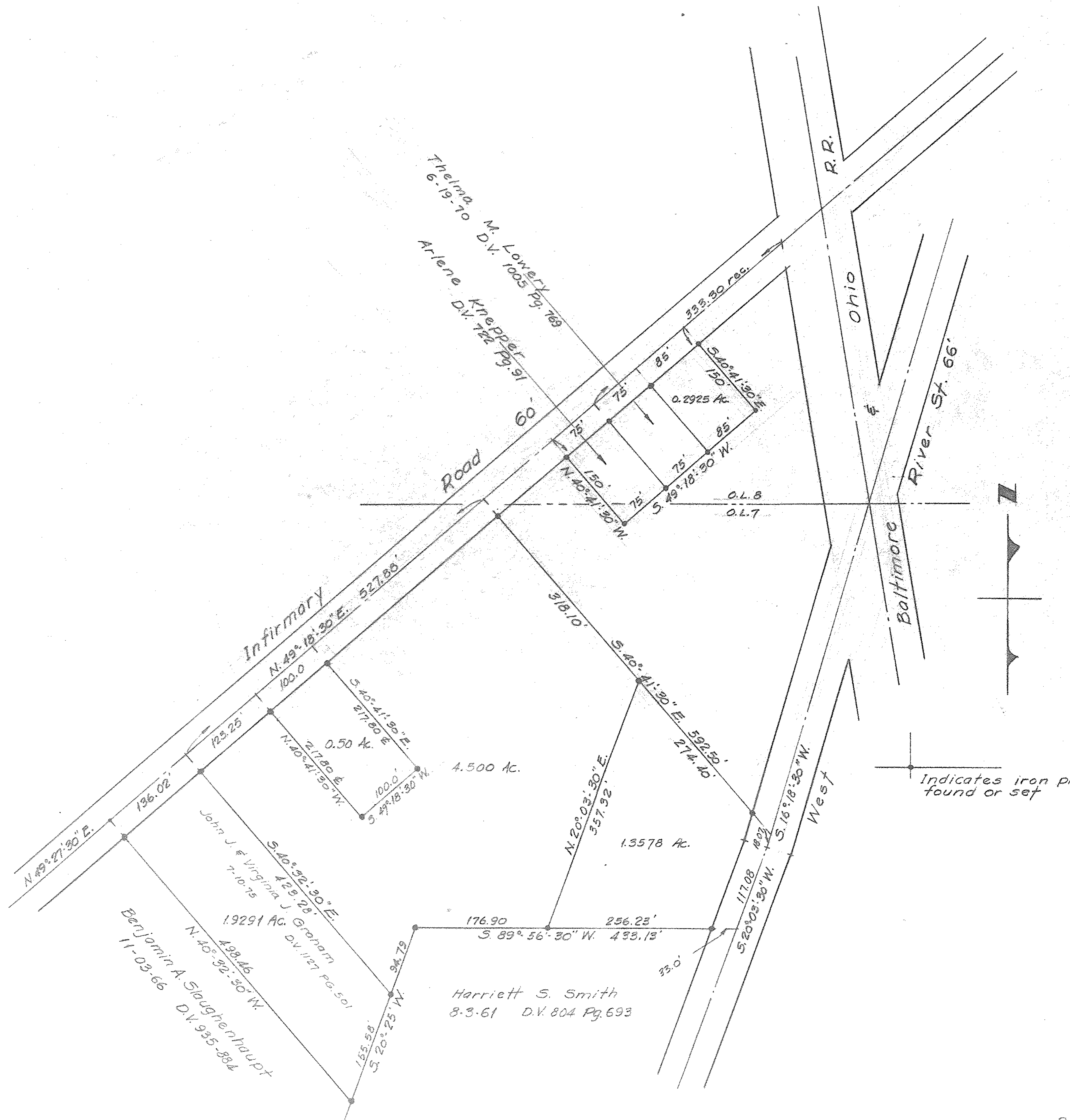


PPN 06-24-007-104 ???  
06-24-008-107 ???

MAP Pg 6-135

4468



Indicates iron pin found or set

Survey for Fred Wallhead et al  
 Part of O.L.'s 7 & 8 W. of River Elyria Twnp.  
 City of Elyria Lorain County, Ohio  
 Scale 1"=100' October, 1972  
 Laundon • Simon • Cahl & Assoc.  
 Engineers & Surveyors

Revised 6-30-76