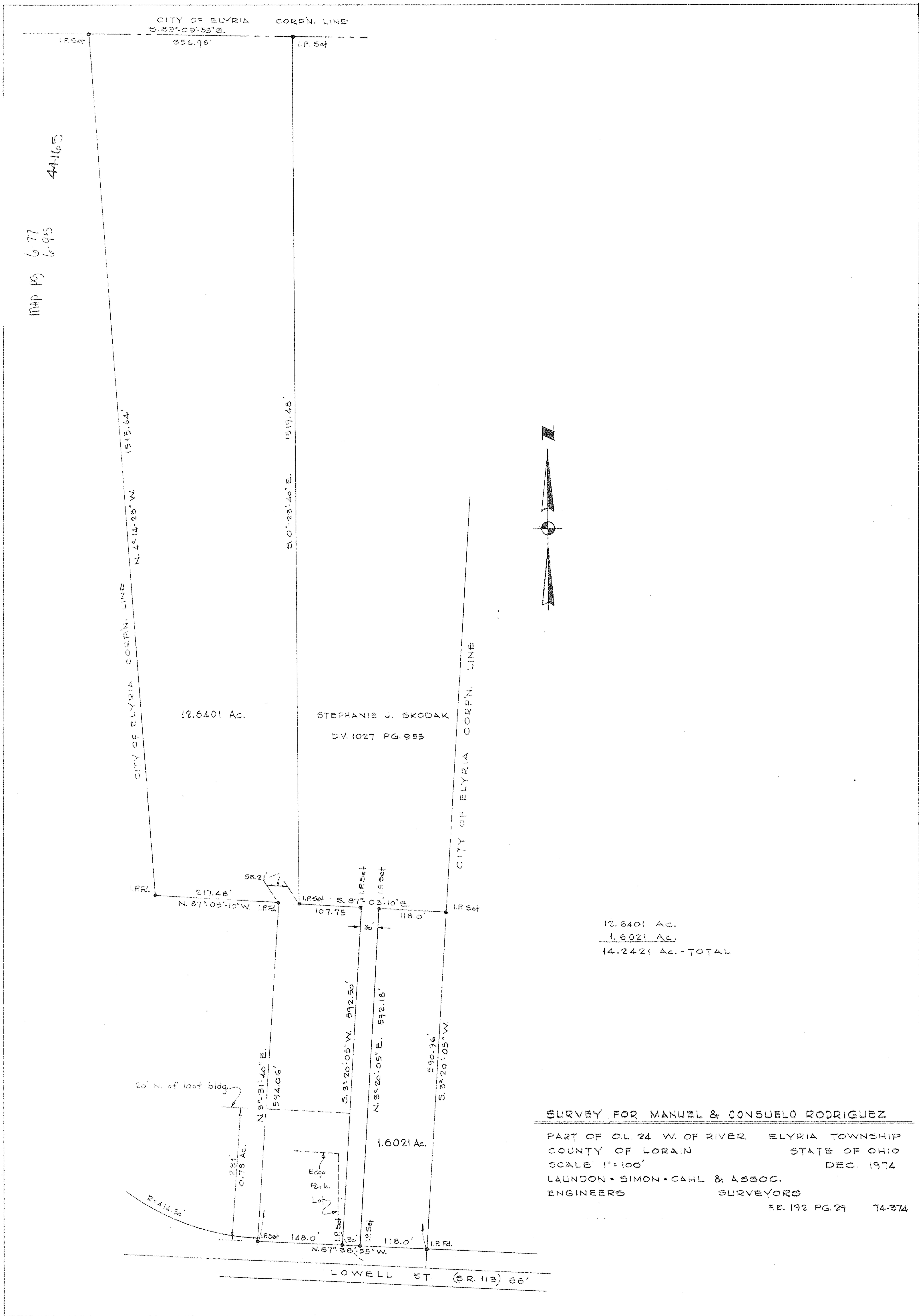


6-24-024-109-016
6-24-024-109-020
6-77
6-95

PPN 06-24-024-109-016
020

11MP P9
6-77
6-95
44-165

74-374



12.6401 Ac.

STEPHANIE J. SKODAK
D.V. 1027 PG. 955

12.6401 Ac.
<u>1.6021 Ac.</u>
14.2421 Ac. - TOTAL

SURVEY FOR MANUEL & CONSUELO RODRIGUEZ
 PART OF OL. 24 W. OF RIVER ELYRIA TOWNSHIP
 COUNTY OF LORAIN STATE OF OHIO
 SCALE 1"=100' DEC. 1974
 LAUNDON • SIMON • CAHL & ASSOC.
 ENGINEERS SURVEYORS
 FB. 192 PG. 29 74-374

74-374

74