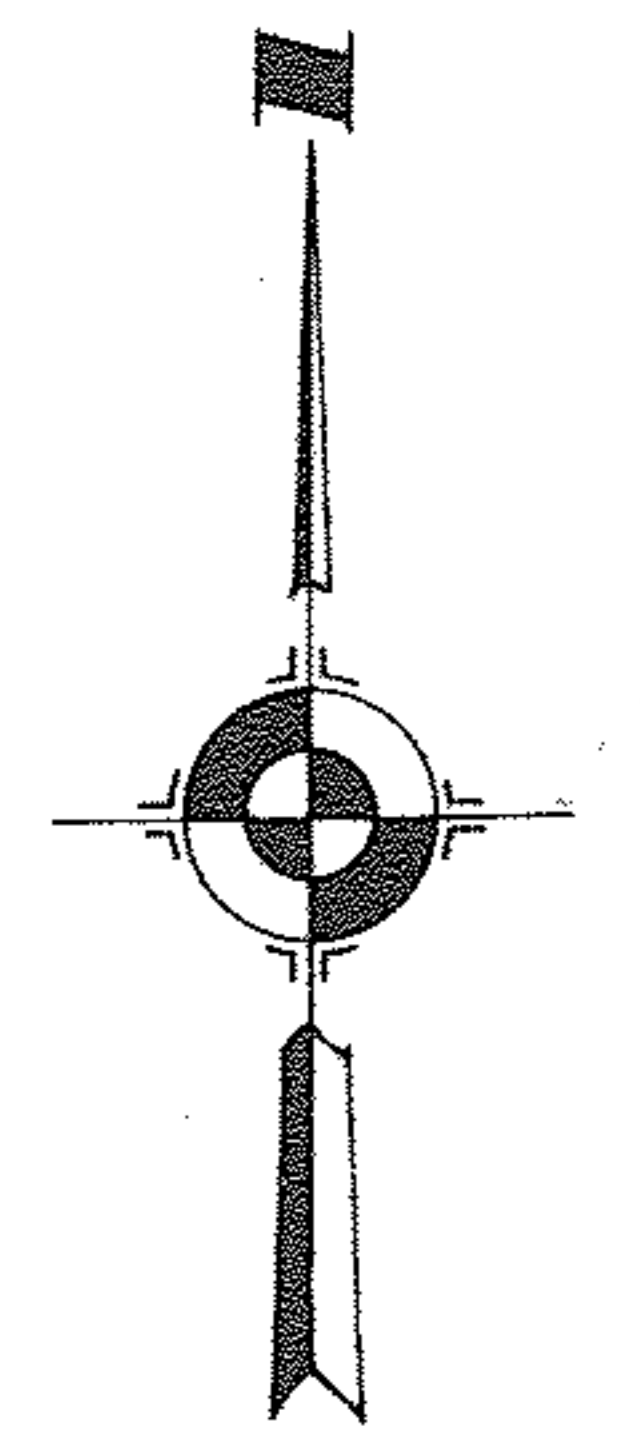
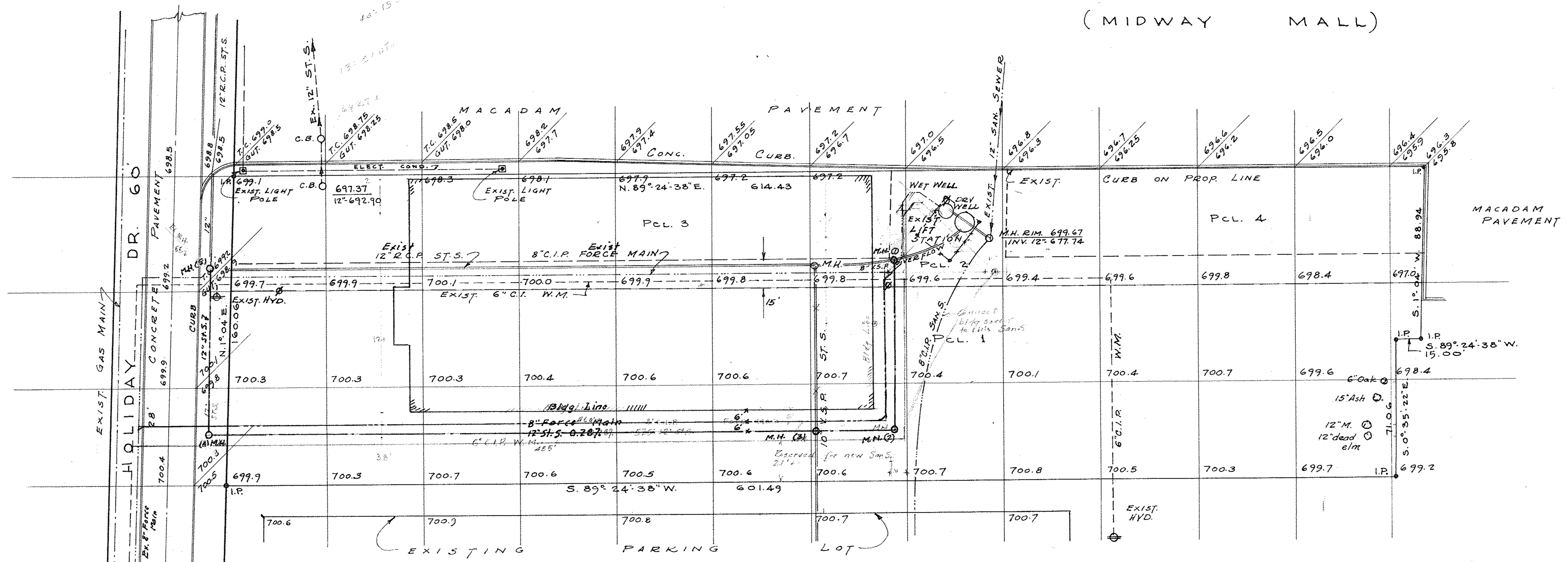


NOTE:  
DEDUCT 537.44 FROM ELEVATIONS SHOWN TO OBTAIN MIDWAY MALL AND CITY DATUM.

SEARS ROEBUCK CO.  
(MIDWAY MALL)



SANITARY SEWER FORCE MAIN  
455 lin. ft. C.I.P. CLASS 150  
5- 45° bends - 90°

12\"/>

HOLIDAY INN

Preliminary plan for utility L.H.S.

PROPERTY AND TOPOGRAPHICAL SURVEY

WATKINS FURNITURE COMPANY

PART OF O.L. 30 WEST OF RIVER-ELYRIA TOWNSHIP  
CITY OF ELYRIA, LORAIN COUNTY OHIO  
SCALE 1"=40'

LAUNDON, HUFFMAN & SIMON REG. ENGINEERS & SURVEYORS

JULY 16, 1969