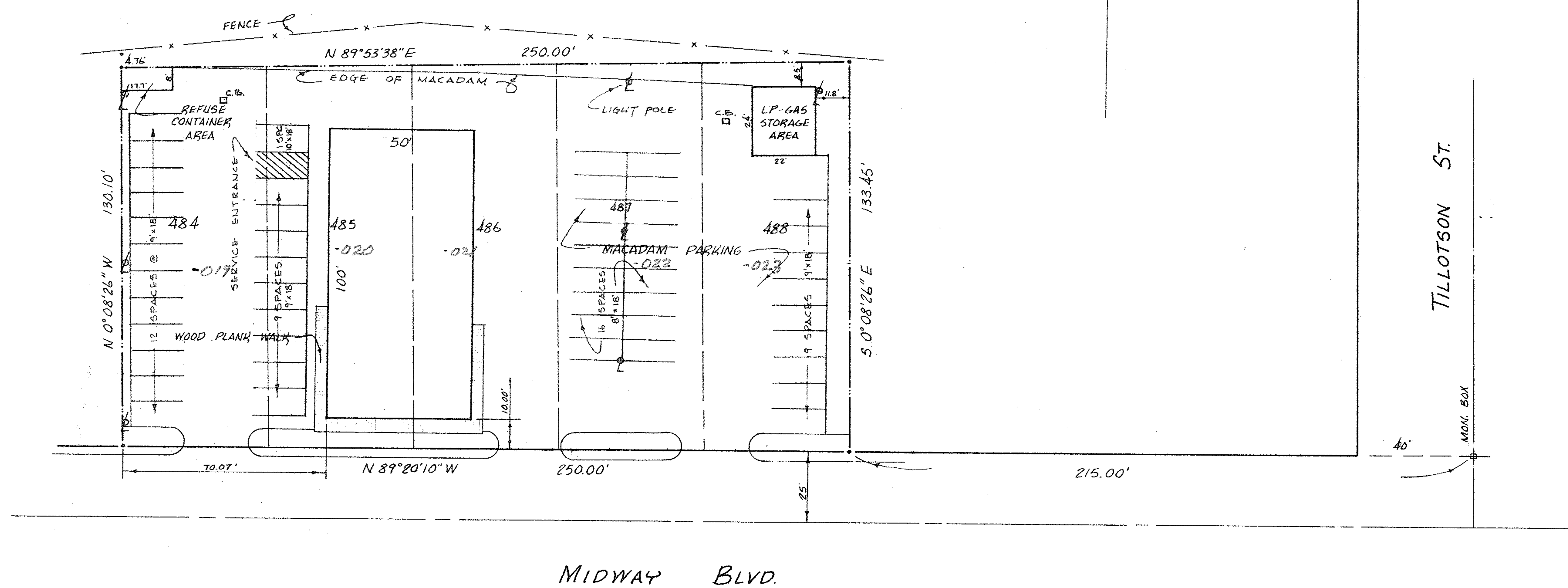
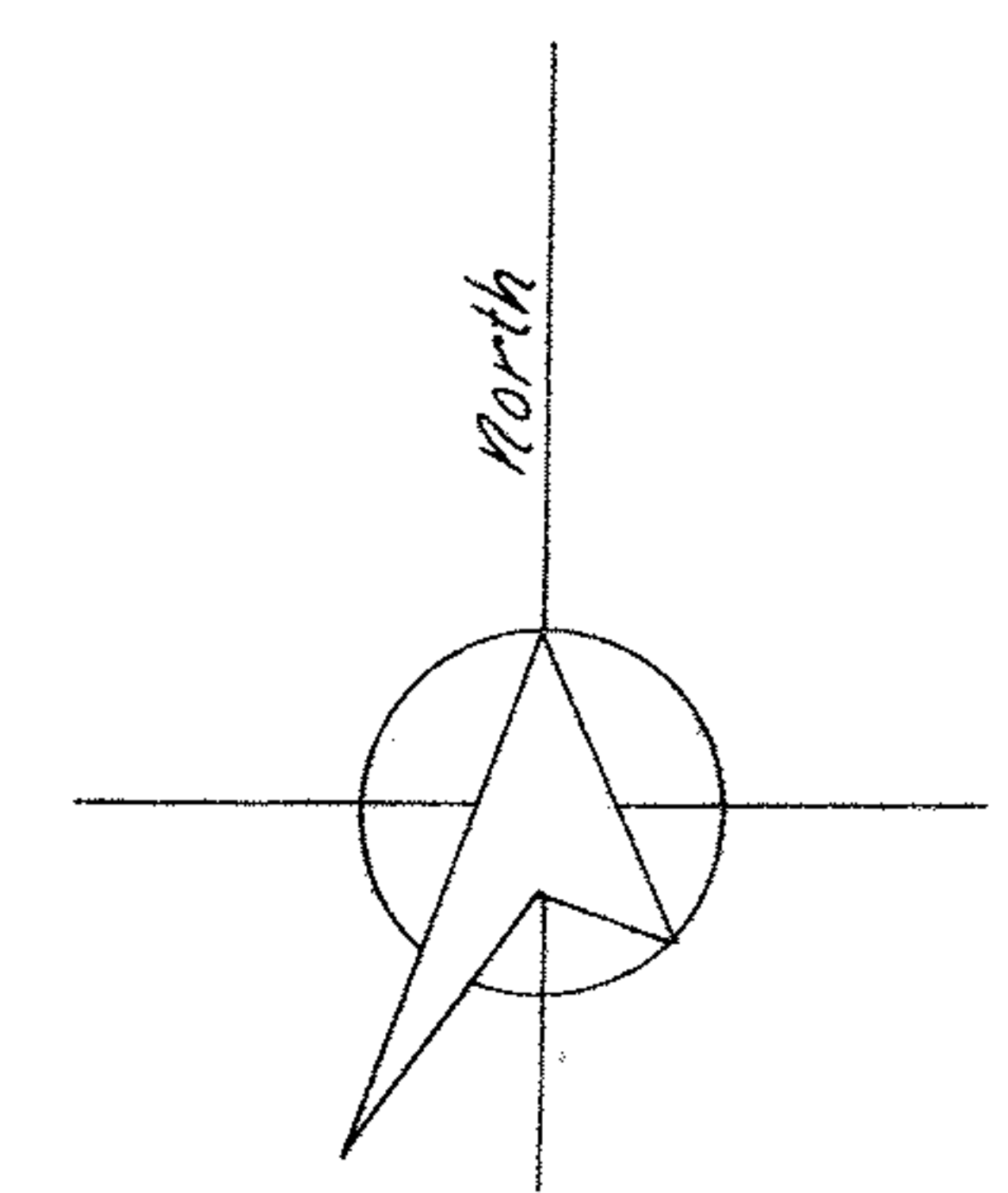
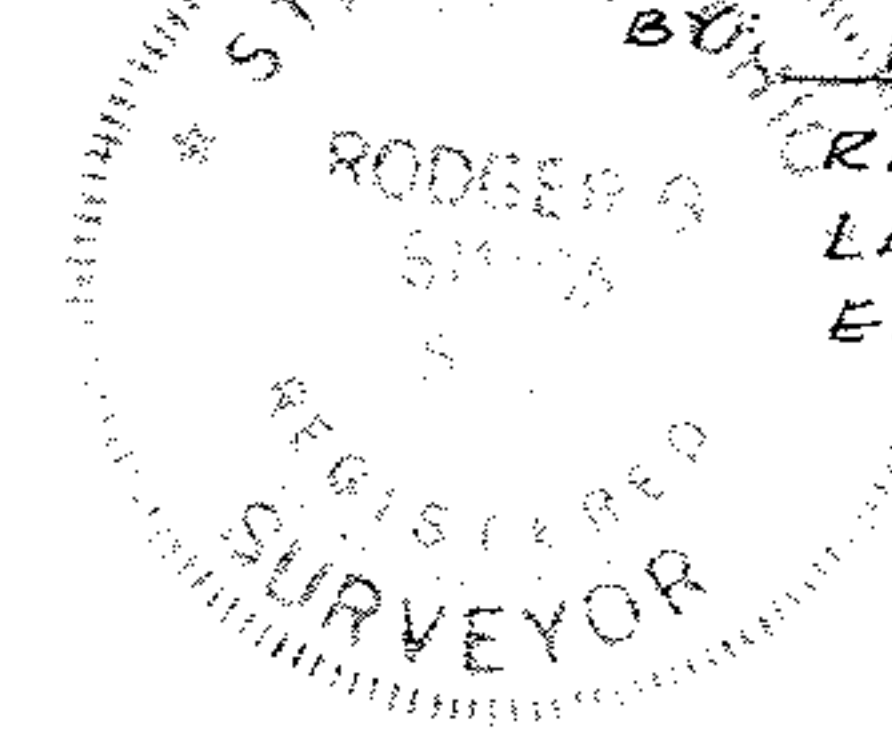


LEGEND:

-  LIGHT POLE
-  CATCH BASIN



THIS IS TO CERTIFY THAT THE INFORMATION SHOWN HEREON IS CORRECT AS FOUND  
 MAY 12, 1977  
*Rodger P. Simon*  
 REGISTERED SURVEYOR #5101  
 LAUNDON · SIMON · CAHL & ASSOC.  
 ENGINEERS SURVEYORS



AS-BUILT FOR RUSTLER STEAK HOUSE

S/L's 484, 485, 486, 487, & 488 LEONA HEIGHTS ALLOT. P.Y. 6-35/36  
 O.L. 31 W. OF RIVER, ELYRIA TOWNSHIP,  
 LORAIN COUNTY, OHIO

SCALE: 1" = 30'

APRIL, 1975

LAUNDON · SIMON · CAHL & ASSOC.  
 ENGINEERS & SURVEYORS