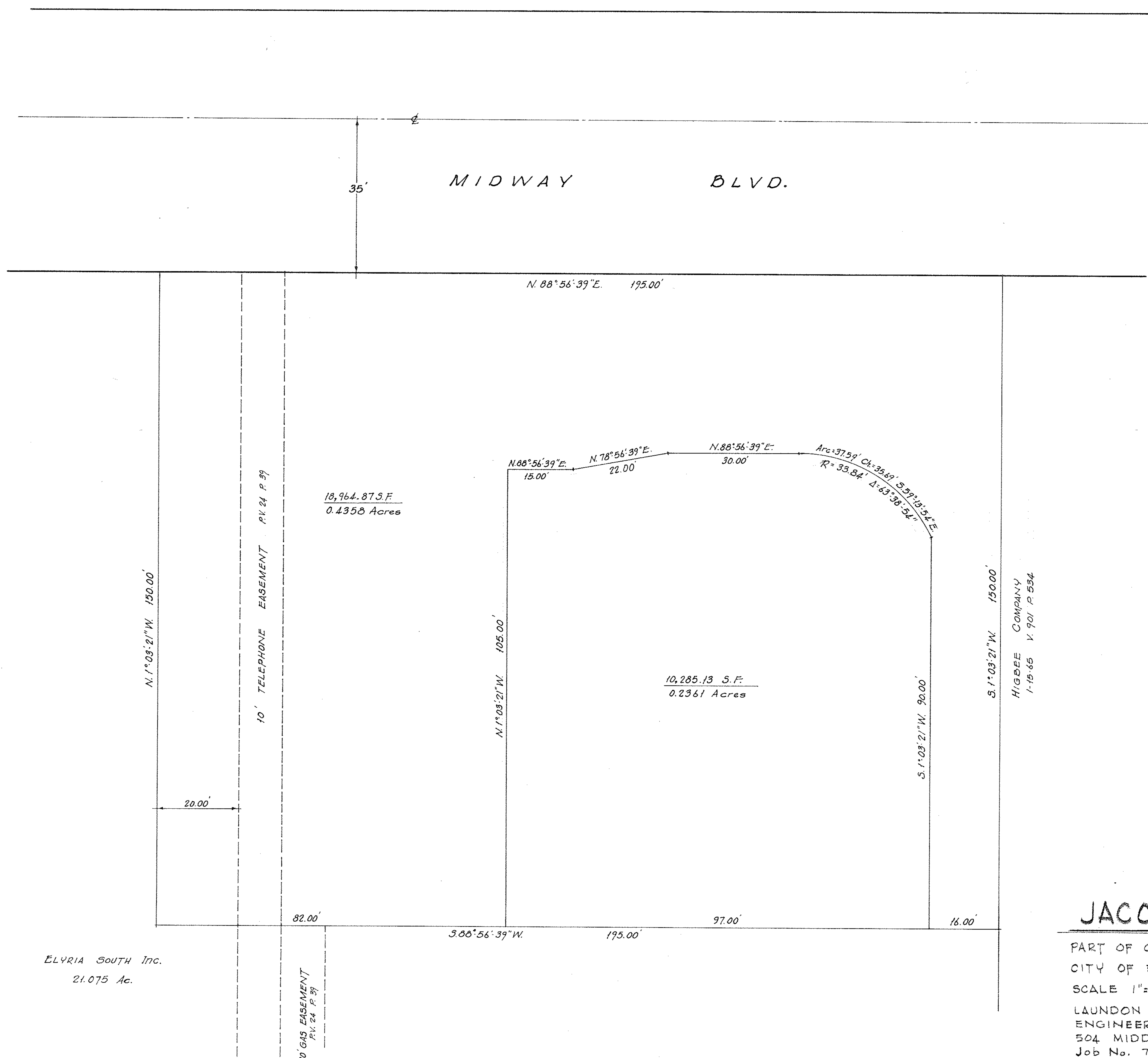


PPN 06-24-031-107-???

MAP PG 6-46, 6-47 44160



SKETCH FOR
JACOBS BROTHERS COMPANY

PART OF O.L. 31 WEST OF RIVER ELYRIA TOWNSHIP
CITY OF ELYRIA LORAIN COUNTY OHIO
SCALE 1"=16' AUGUST 5, 1977
LAUNDON • SIMON • CAHL & ASSOC. INC.
ENGINEERS SURVEYORS
504 MIDDLE AVE. ELYRIA, O. 44035
Job No. 77-654

ELYRIA SOUTH INC.
21.075 Ac.

10' GAS EASEMENT
PV. 24 P. 39

10' TELEPHONE EASEMENT
PV. 24 P. 39

HIGBEE COMPANY
1-15-65 V. 901 P. 554