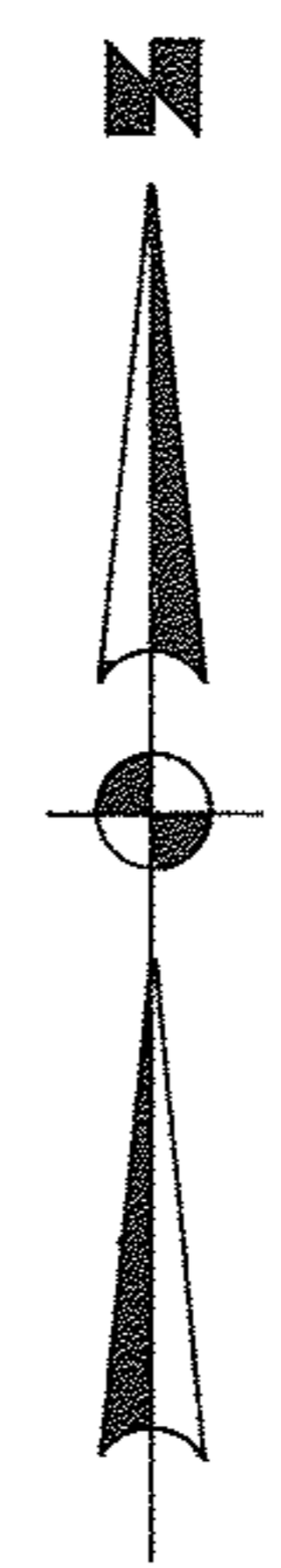


RUSH ST. 50'



LAKE

ERIE ST. 50'

AVE. 66'

46

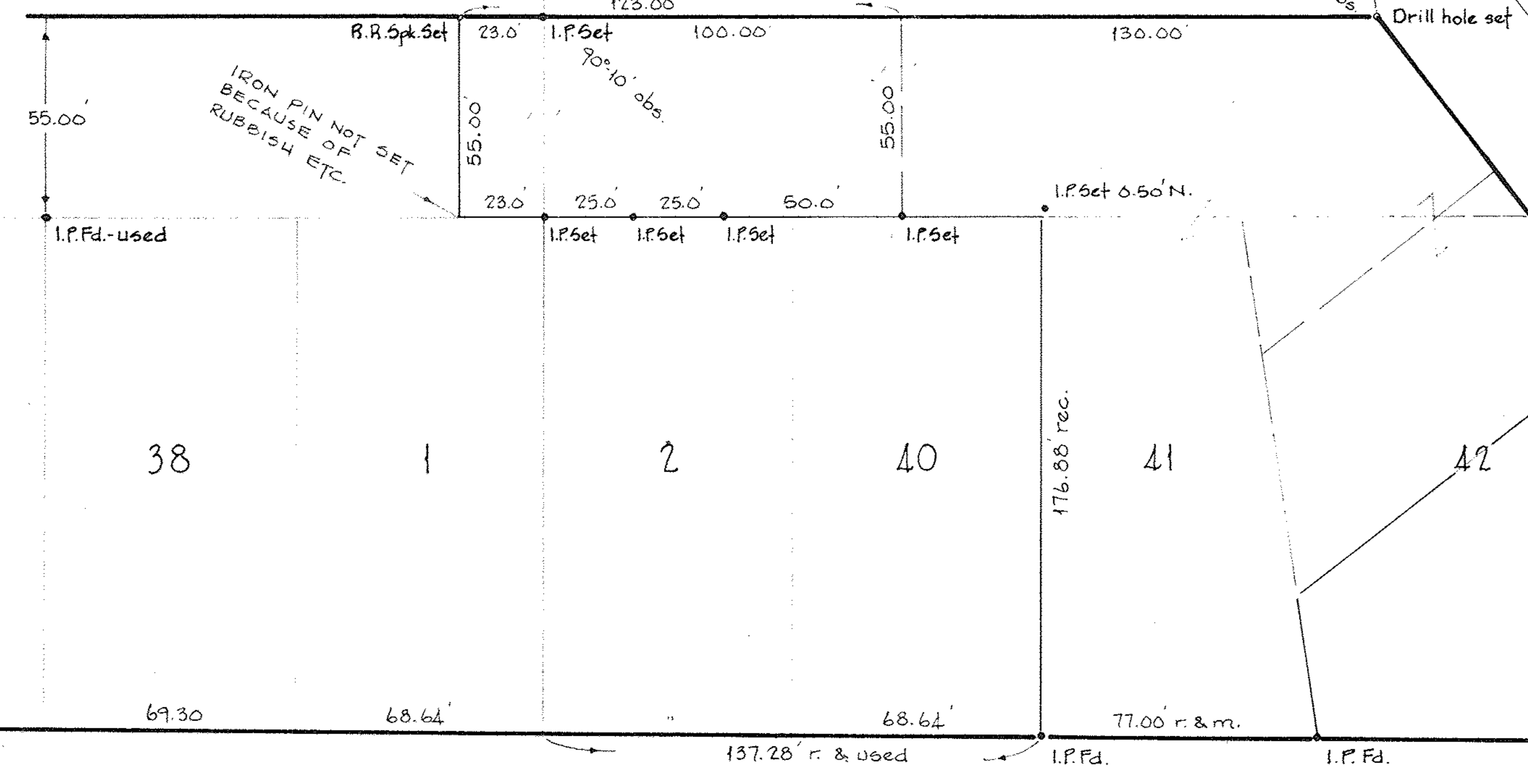
43

SHEAR ST. 25'

SURVEY FOR

ROBERT HAROLD

PART OF S/L's. 43 & 46 of C.A. & FRANK BRONSON'S ADD'N.
 PLAT VOL. 2 PG. 15
 CITY OF ELYRIA - COUNTY OF LOBAIN - STATE OF OHIO
 SCALE 1"=40' APRIL, 1982
 LAUNDON • SIMON • CAHL & ASSOC.
 ENGINEERS SURVEYORS



LOWELL ST. 66'