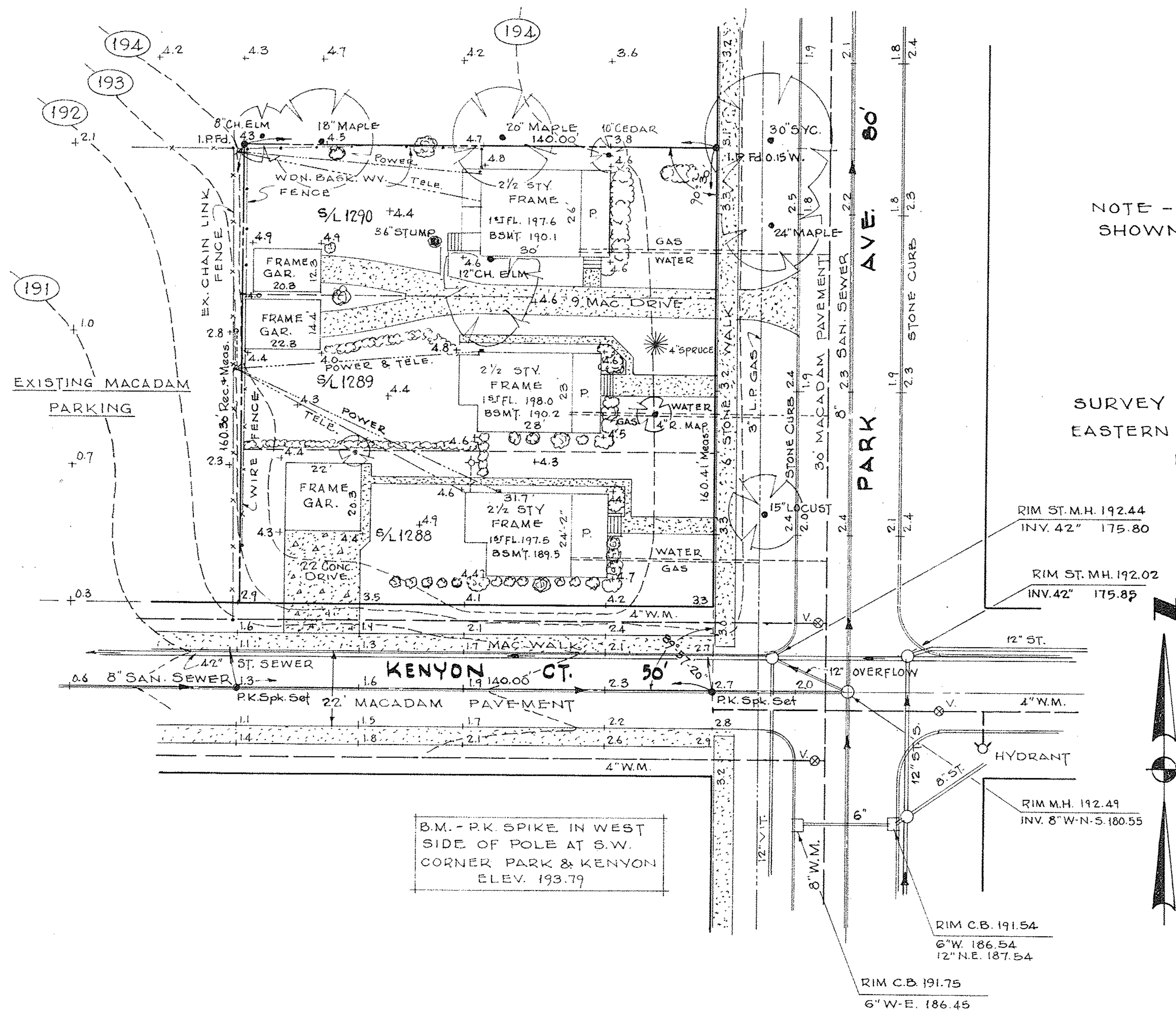


PPN 06-25-076-101-013
 014
 015

MAP PG 6-121 44148

ZONING - R-2 (RESIDENTIAL TWO-FAMILY)

PARKING LOT RESTRICTIONS -
 MAY BE CONSTRUCTED TO R/W LINES
 OF KENYON AND PARK AVE. HOWEVER,
 NOT DESIRABLE.



NOTE - ADD 190.0 TO ELEVATIONS
 SHOWN FOR CITY DATUM.

SURVEY OF S/L's 1288, 1289 & 1290 OF
 EASTERN HEIGHTS LAND CO'S. SUBN. 5
 PLAT VOL. 8 PAGE 41

B.M. - R.K. SPIKE IN WEST
 SIDE OF POLE AT S.W.
 CORNER PARK & KENYON
 ELEV. 193.79

LAND AND TOPOGRAPHICAL SURVEY

ELYRIA MEMORIAL HOSPITAL

CITY OF ELYRIA LORAIN COUNTY OHIO
 SCALE 1"=30' JANUARY 21, 1976

LAUNDON • SIMON • CAHL & ASSOC.
 ENGINEERS SURVEYORS